

Teamcenter integration for IBM Rational ClearCase

Integrating ClearCase software components into Teamcenter-managed product configurations

Benefits

- Perform software configuration management in a native ClearCase environment
- Manage software as part of your product configurations
- Enable software developers to participate in an integrated design environment
- Tie product requirements into your software lifecycle
- Accelerate software development, improve its quality and reduce its cost
- Establish a single source of product and process information

Business challenges

- Software development is often isolated from other development groups
- Source code management is usually performed in an ad-hoc manner
- Software components are not normally managed within the product configuration
- Software build processes and workflows are inconsistent
- Software features are not traceable to product requirements

Summary

Teamcenter® software's IBM-certified integration for ClearCase enables companies to incorporate software components created under IBM Rational ClearCase into complex product configurations comprised of multiple mechanical, electrical, electronic and software design elements. Teamcenter's single source of product and process knowledge facilitates change management, problem reporting and release tracking across every stage of the product lifecycle.

Source code configuration management

By integrating software design elements created under IBM Rational ClearCase into a single Teamcenter-managed PLM environment, you can use ClearCase to perform all of the functions associated with software source code configuration, including managing source code modules, development workspaces, software builds, baselines, local processes and version controls. Once your software definitions are ready to be shared on an enterprise basis, the IBM-certified "Ready for Rational" Teamcenter integration for ClearCase links these definitions to the overall product configurations managed under Teamcenter.

In response to user-, demand- or event-driven requests, ClearCase information is seamlessly presented to the user as if it was stored in Teamcenter. By using a standards-based exchange process, you can extend the source code management capabilities of ClearCase into an integrated PLM environment.

Product configuration management

Teamcenter enables you to establish high-level product configurations that identify all of the bill of material (BOM) views and underlying design elements that comprise a product.

Teamcenter's robust configuration management capabilities are especially adept at managing integrated product structures associated with complex products comprised of multiple software and electronic hardware components, including:

- PROMs – assembled parts consisting of a memory and software program or image
- Memory and processors – purchased electronic hardware parts into which manufacturing will burn a software program
- Images – programs into which manufacturing is able to burn software

TEAMCENTER

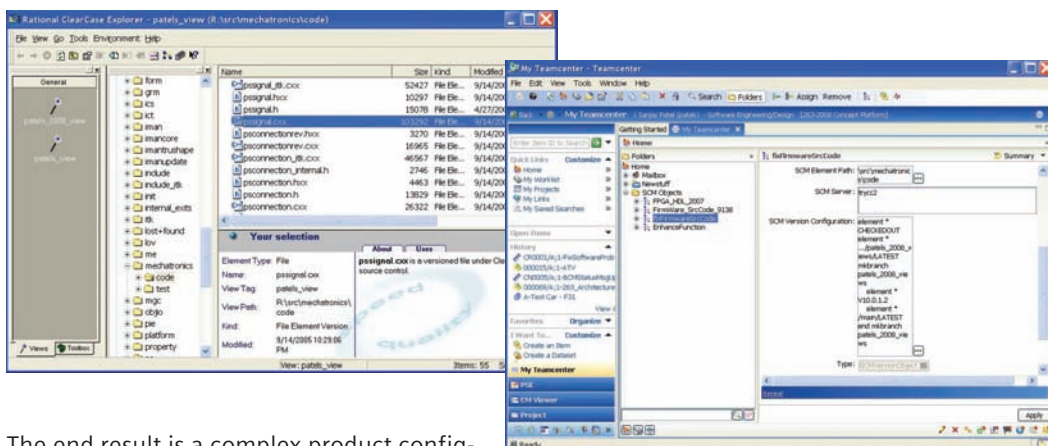
www.siemens.com/teamcenter

SIEMENS

Teamcenter integration for IBM Rational ClearCase

Features

- Facilitate source code configuration management
- Vault ClearCase metadata in Teamcenter
- Capture ClearCase classes using selection criteria
- Automatically exchange data between ClearCase and Teamcenter
- Leverage dynamic part support to automatically retrieve related ClearCase data
- Employ a rich set of ClearCase views as search criteria
- Integrate software components into your product configurations and workflows



The end result is a complex product configuration and set of variants that define your product in terms of its mechanical, electrical, electronic and software design elements. Equally important, Teamcenter manages the product and process definitions that apply to these configurations and fine-grain design elements as they evolve across your entire product lifecycle.

Integrated design environment

Designers and engineers often work in isolated islands of automation that include separate MCAD, ECAD and document authoring systems, as well as CASE tools. Teamcenter's ClearCase integration enables your software development teams to transcend these barriers by sharing their most stable ClearCase data with the rest of the stakeholders in the product lifecycle.

Your software development teams can work with other design domains within Teamcenter to establish a common product definition, capture that definition's underlying information assets, share product knowledge and participate in automated cross-discipline processes.

Requirements management and traceability

Teamcenter's ClearCase integration enables you to leverage Teamcenter's powerful requirements management capabilities. Development teams can associate software source code functions with specific design requirements, providing complete requirements traceability through your entire software lifecycle. This level of traceability enables your software developers to better understand a product's true quality definitions, letting them design-in quality and design-out defects.

Single source of product and process knowledge

By integrating software design elements created under IBM Rational ClearCase into a single Teamcenter-managed PLM environment, your company can configure, track and control all of the hardware and software components that comprise your product offerings. Once these components are in place within your secured PLM environment, you can leverage them in structured workflows and controlled change processes.



IBM's certification validates that the Teamcenter integration for IBM Rational ClearCase meets IBM's requirements for interoperability and user experience.

Contact
Siemens PLM Software
Americas 800 498 5351
Europe 44 (0) 1276 702000
Asia-Pacific 852 2230 3333

www.siemens.com/teamcenter

© 2011 Siemens Product Lifecycle Management Software Inc. All rights reserved. Siemens and the Siemens logo are registered trademarks of Siemens AG. D-Cubed, Femap, Geolus, GO PLM, I-deas, Insight, JT, NX, Parasolid, Solid Edge, Teamcenter, Tecnomatix and Velocity Series are trademarks or registered trademarks of Siemens Product Lifecycle Management Software Inc. or its subsidiaries in the United States and in other countries. All other logos, trademarks, registered trademarks or service marks used herein are the property of their respective holders.
X3 13361 1/11 C