

SIEMENS

Ingenuity for life

Teamcenter Rapid Start SaaS for Solid Edge

Cloud-delivered PDM environment helps Solid Edge customers take control of designs, data and processes to streamline product development

Benefits

- SaaS delivery provides instant access to PDM capabilities and processes
- Secure and cost-effective delivery of PDM value and return-on-investment
- Predictable operational expense versus capital expense
- Flexibility, scalability and reliability that matches business demands
- Allows IT to focus on core business functions versus managing the environment
- Eliminates complexity, time, cost and risk of installation, maintenance and upgrades
- Enterprise-grade infrastructure and security

Summary

Your company is continually challenged to reduce development costs, improve productivity and increase quality. In addition, your designers require 100 percent confidence in their ability to find the latest information, work on correct versions and synchronize data between different company sites. At the same time, you must adapt to changing markets, often moving from centralized product development to distributed design with global partners.

The Teamcenter® software Rapid Start SaaS configuration for Solid Edge® software from Siemens PLM Software delivers the world's most widely implemented product lifecycle management (PLM) solution, to support Solid Edge computer-aided design (CAD). Teamcenter Rapid Start SaaS for Solid Edge is available through a

software-as-a-service (SaaS) delivery model to help you manage and share product information, accelerate your product-related processes and successfully manage your most precious asset – product knowledge.

The Teamcenter Rapid Start SaaS delivery provides Solid Edge users with instant access to preconfigured PDM capabilities for a simplified user experience based on common best practices and the expertise of Siemens PLM Software. Solid Edge software is run on the local device, and CAD files are cached locally to optimize the user experience for designers working with complex parts and large assemblies.

The PDM environment leverages Active Workspace, which is an innovative interface for Teamcenter that provides you with a streamlined and intuitive PDM user experience. Active Workspace is embedded within Solid Edge, enabling designers to execute PDM actions directly from within Solid Edge, without having to leave the CAD environment. Beyond the Solid Edge user, Active Workspace can help you increase productivity business-wide by allowing you to find what you need faster, providing you with seamless access to PDM when and where you need it.

With this configuration, Teamcenter Rapid Start SaaS for Solid Edge is Siemens-managed, with named-user licensing, software delivery, and upgrades managed via the cloud. The flexible SaaS financial model includes

Teamcenter Rapid Start SaaS for Solid Edge

Benefits *continued*

- Simplifies common product development and engineering tasks
- Reduces nonproductive design data management tasks
- Improves ability to accommodate and communicate design changes
- Accelerates product development by promoting design re-use
- Provides common best practices for PDM
- Extends the use of PDM to users outside of the engineering department
- Delivers higher-quality designs and products

setup, administration and operations management services to get you up and running quickly and cost-effectively, for a fast return on your investment.

The Siemens-managed SaaS environment is built on the enterprise-grade Amazon Web Services (AWS) infrastructure, which includes security, compliance and support for global organizations. The AWS cloud infrastructure is housed in AWS's data centers, designed to satisfy the requirements of its most security-sensitive customers. The AWS infrastructure has been designed to provide the highest availability while putting strong safeguards in place regarding customer privacy.

Industry-leading 3D design software

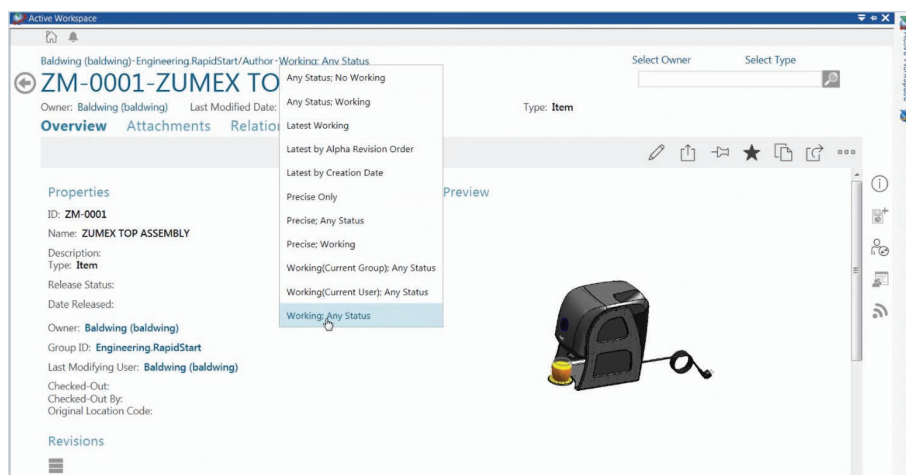
Solid Edge is a portfolio of affordable, easy-to-use software tools that address all aspects of the product development process – 3D design, simulation, manufacturing, design management and more, thanks to a growing ecosystem of applications. Solid Edge uses synchronous technology to help you accelerate product design, make revisions faster and improve design data re-use. With faster 2D drafting, best-in-class sheet metal design, flexible part and assembly modeling, built-in photorealistic rendering and unmatched mobility, Solid Edge helps you design better.

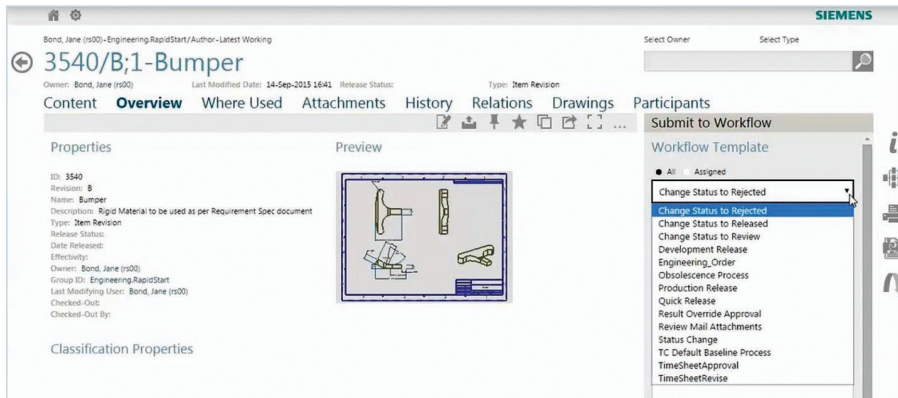
Mechanical design and data management

Teamcenter Rapid Start enables Solid Edge design teams to create, manage and re-use native design data, all in a single, secure PDM environment. You can manage and accelerate design collaboration for any size engineering team with seamless management, control and security for your Solid Edge data. Your users can rapidly search for designs, manage data revisions and product structures, and participate in workflows like design release and engineering change.

Using embedded Active Workspace, your Solid Edge design teams can enjoy uninterrupted productivity and superior usability. Solid Edge designers can access live Teamcenter Rapid Start capabilities, including check-in/check-out, maturity status, revision, where-used, what's changed and more. With access to the PDM inbox from Active Workspace, designers can work directly on assigned tasks without ever leaving Solid Edge. They can participate in workflows and manage workflow tasks, with the convenience of data and change objects working seamlessly together.

Solid Edge multi-CAD support enables design teams to load and assemble designs from any major CAD system into Solid Edge for multi-CAD product development. Solid Edge works with Solid Edge designs as well as JT format representations of non-Solid Edge designs, and eliminates unnecessary delays caused by constant data translation. This innovative approach to multi-CAD collaboration enables your business to leverage other CAD design data. Designs can be shared in the neutral JT format with non-Solid Edge users, using the embedded JT viewer in Active Workspace. Solid Edge designs can also be assigned part numbers and related to a common product structure in a bill of material (BOM).





Going beyond the Solid Edge workgroup, Teamcenter Rapid Start enables people in different locations and throughout your supply chain to work closely together to streamline product development processes. All design information created using Solid Edge is captured, controlled and shared in a single, highly secure PDM environment, while version management and access control ensure that the right people get the right information at the right time. You can extend your PDM environment beyond engineering to share designs and documents and support business-wide collaboration.

- On-demand access to Teamcenter Rapid Start parts, assemblies, drawings and data from inside Solid Edge
- Navigate, search, view data, check-in/check-out, access documents
- Participate in workflows directly from your Active Workspace inbox

- Vault, manage and control multiple revisions of component and product designs
- Capture, control and share Solid Edge data in a highly secure Teamcenter Rapid Start environment, with support for all advanced Teamcenter Rapid Start security designations and data access controls
- Ability to create, configure and edit a product structure in either Teamcenter Rapid Start or Solid Edge
- Consistent visualization of assemblies and their constructs in Solid Edge and Teamcenter
- Ability to load product structure by applying revision rules
- Selective/partial load of product structure for efficient management of assembly designs
- Where-used queries that enable fast impact analysis for proposed changes
- Multi-CAD visualization using JT representations of third-party CAD data

- Intelligent part numbering to automatically generate part numbers that are consistent with company standards
- Access manager with preconfigured and user-defined security permissions
- Bill-of-materials (BOM) management provides visibility to the product definition
- Product structure manager for creating and editing product structures outside of Solid Edge
- Relationship browser for easy viewing of product structures and associated workflows

Document management

The product definition is not limited to the design. Teamcenter Rapid Start manages Microsoft® Office® and Adobe® documents to create a single repository for all product-related data and extend the use of PDM to users outside of the engineering department. In one central system, you can maintain up-to-date technical publications, process sheets, customer requirements, manufacturing setups, test specifications or any other documents that you may want to manage. You can route documents for review and comment using the embedded 3D viewer with both text and image markup capabilities.

Reporting

Teamcenter Rapid Start provides preconfigured reports, including BOM management and change management.



Shop floor viewer

Teamcenter Rapid Start offers a preconfigured shop floor viewer group to help manufacturing teams find up-to-date, product-release data.

Preconfigured workflows and statuses

Based on commonly implemented industry best practices and the experience Siemens PLM Software has gleaned from thousands of PDM implementations, Teamcenter Rapid Start comes with a set of preconfigured workflows and statuses to help you release your products, including 25 special handlers. Teamcenter Rapid Start includes a preconfigured change management workflow, along with configuration management capabilities that support revision rules and revision status filtering.

Cloud-delivered workflows include:

- Development release
- Obsolescence process
- Production release
- Quick release
- Status change
- Engineering order

SaaS delivery model

The SaaS model provides the easiest way to get up and running quickly – simply subscribe and go.

- No waiting on capital expenditure budget or hardware requisitions
- Increase speed and agility
- Allows IT to work on business-specific projects instead of undifferentiated tasks

Siemens has partnered with industry leader Amazon Web Services (AWS) as our cloud infrastructure partner to provide proven security measures. In general, your data is much safer on the cloud than it is on premise. AWS has comprehensive security capabilities to satisfy the most demanding information

security requirements. In fact, many U.S. government agencies and companies small and large use the same AWS cloud infrastructure that Siemens uses to protect your data.

Manage Solid Edge designs and product-related data on the cloud for fast time-to-value

Teamcenter Rapid Start SaaS for Solid Edge provides you with a comprehensive design and data management environment to support your business processes. Capitalize on our flexible SaaS “subscribe-and-go” model to get your PDM environment up and running quickly and cost-effectively, for a faster return on your investment.

Siemens PLM Software
www.siemens.com/plm

Americas +1 314 264 8499
 Europe +44 (0) 1276 413200
 Asia-Pacific +852 2230 3308

© 2016 Siemens Product Lifecycle Management Software Inc. Siemens and the Siemens logo are registered trademarks of Siemens AG. D-Cubed, Femap, Fibersim, Geolus, GO PLM, I-deas, JT, NX, Parasolid, Solid Edge, Syncrofit, Teamcenter and Tecnomatix are trademarks or registered trademarks of Siemens Product Lifecycle Management Software Inc. or its subsidiaries in the United States and in other countries. All other logos, trademarks, registered trademarks or service marks belong to their respective holders.

55608-A3 7/16 B