

**SIEMENS**

*Ingenuity for life*

# What's new in Preactor APS 17.2

## Featuring improvements to Advanced Planning, material pegging and Gantt interaction

### Benefits

- Advanced Scheduling toolbar and automation functionality extended to Advanced Planning
- Improved material pegging performance with high-volume data sets
- Improved Gantt chart interaction

### Features

- New customizable Advanced Planning toolbars
- New Advanced Planning automation scripts
- Material pegging performance improvements
- Improved Gantt interaction performance

### Summary

Preactor software is a family of production planning and scheduling products that improve the synchronization of your manufacturing processes, giving you greater visibility and control that enable you to increase resource utilization and

on-time delivery while reducing inventory levels and waste. Preactor APS is a highly customizable capacity planning and scheduling package.

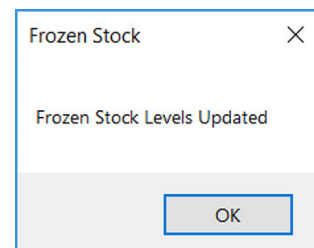
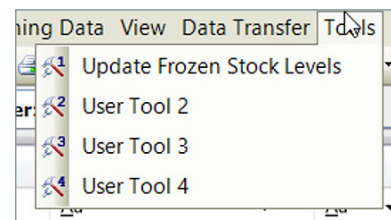
### New customizable Advanced Planning toolbars

Enhancements have been made to the existing toolbar structure within Advanced Planning to allow additional customized toolbars, extending the customization to trigger Preactor Event Script Processor (PESP) event scripts and third-party custom actions.

### Default toolbars

Preactor Advanced Planning has been extended to allow easy configuration of toolbars with four predefined toolbar buttons profiles.

User Tool Name	User Tool Script
Update Froze Stock Levels	Update Froze Stock Levels
User Tool 2	User Tool 2
User Tool 3	User Tool 3
User Tool 4	User Tool 4



# What's new in Preactor APS 17.2

These customized toolbars enable you to trigger PESP event scripts and custom actions, to allow easy integration with third-party systems and tooling within the Advanced Planning module.

## New Advanced Planning automation events

In line with features existing in Advanced Scheduling, Advanced Planning has been extended to allow Preactor to automatically execute macro commands.

```
/RUN:New  
/RUN:Calculate MPS  
endif
```

Preactor Advanced Planning now offers the ability to run the most commonly used functions within the planner module.

## Improved material pegging performance

Material pegging performance has been improved when handling high-volume data configurations containing large Bill of Material requirements.

## Improved Gantt interactions

Dragging and dropping interaction has been improved with large datasets, improving responsiveness.

Siemens Digital Industries Software  
[siemens.com/plm](https://www.siemens.com/plm)

Americas +1 314 264 8499  
Europe +44 (0) 1276 413200  
Asia-Pacific +852 2230 3333