



What's new in Opcenter Execution Semiconductor 8.4

Enhanced wafer carrier slot mapping, redesigned Designer and Portal Studio tools and improved user interfaces

Benefits

- Enhanced wafer carrier slot mapping functionality
- Improved Portal Studio and Designer applications
- Redesigned audit trail pages with enhanced user experience
- French language dictionary
- Problem resolutions addressed

Summary

Opcenter™ Execution Semiconductor (formerly known as Camstar™ Semiconductor suite) is a comprehensive manufacturing execution system (MES) that enables both wafer fabrication factories and assembly and test sites to meet traceability requirements, control production and integrate the shop floor into their enterprise resource planning (ERP) system and extended enterprise. Opcenter Execution Semiconductor addresses your needs

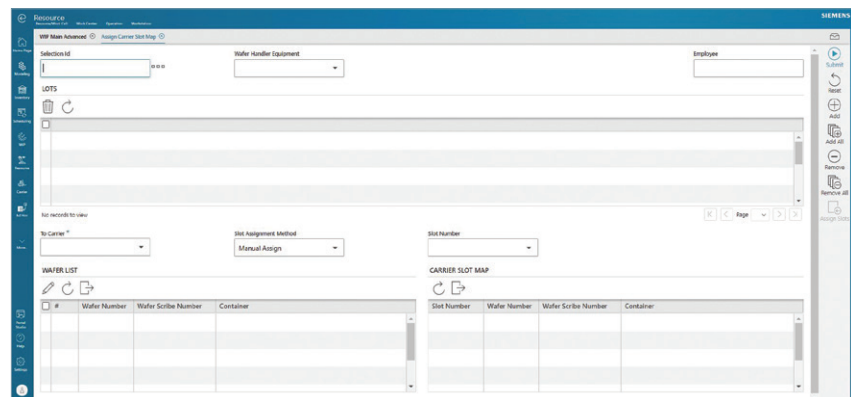
on a configurable, scalable and modular platform for production.

This release provides enhanced and comprehensive functionality for wafer carrier slot mapping management. It includes the new and improved Portal Studio 2.0 and Designer 2.0 tools. The release implements two redesigned virtual pages with improved functionality and user experience.

Features

Enhancements for wafer carrier slot mapping

- Enhanced wafer carrier slot mapping functionality
 - One-step process to assign, de-assign and change carriers and slot mapping functionality
 - Ability to use equipment with recipes for wafer carrier management with automated and manual slot ordering methods
 - One-step process enabled when splitting or combining lots by items



What's new in Opcenter Execution Semiconductor 8.4

Enhanced software tools

- Portal Studio 2.0
 - Delivers an improved portal user interface development tool
 - Removes dependency on Microsoft Silverlight
 - Delivers various tool improvements
 - Default version for UI design
 - Version 1.0 is still available
- Designer 2.0
 - Delivers a new metadata management tool built on .NET
 - Removes dependency on Visual Basic 6
 - Provides a way to load metadata into memory while working on it
 - Delivers various tool improvements
 - Default version for metadata design
 - Version 1.0 is still available

Enhanced virtual pages

- Implement core/industry solutions redesigned virtual pages
 - New refactored manufacturing audit trail and resource audit trail pages
 - Enhanced filtering functionality with improved user experience

Internationalization

- Introduced French language dictionary

Problem report fixes

- For the list of PRs addressed, please see the software release notes

The screenshot shows the Opcenter Execution Semiconductor 8.4 interface. On the left, there is a 'Filters' sidebar with a search bar and several dropdown menus for 'Resource Type', 'Resource Group', 'Resource Family', and 'Resource' (set to 'MNT002'). Below these are sections for 'Timeframe' and 'Transactions'. The main area displays a 'HISTORY MAINLINE' table with the following data:

Txn Date	Txn Type	Additional ESignature Requirement	Application	Attach Document History	Doc Att
11/19/2020 4:15:29 PM	Track Out Lot		0		
11/19/2020 4:15:10 PM	Track In Lot		0		

At the bottom of the table, it says 'Showing 1 to 2 of 2 entries'. The interface also includes a 'Reset' button and a 'Search' button at the bottom left of the table area.

Siemens Digital Industries Software
[siemens.com/software](https://www.siemens.com/software)

Americas +1 314 264 8499
 Europe +44 (0) 1276 413200
 Asia-Pacific +852 2230 3333