



What's new in Opcenter Research Development and Laboratory version 8.1

technological evolution, providing light-weight client applications to the user, employing web technology and HTML5. This release focuses primarily on the user interface alignment with PLM standards, the generic integration layer and the configuration module for plate management.

Capabilities

Improvements in Opcenter RD&L v8.1 include:

- General
 - User interface alignment with PL guidelines
 - Flexible filters
- LIMS
 - Configuration module for plate management
 - Support of translations for plates and request scan

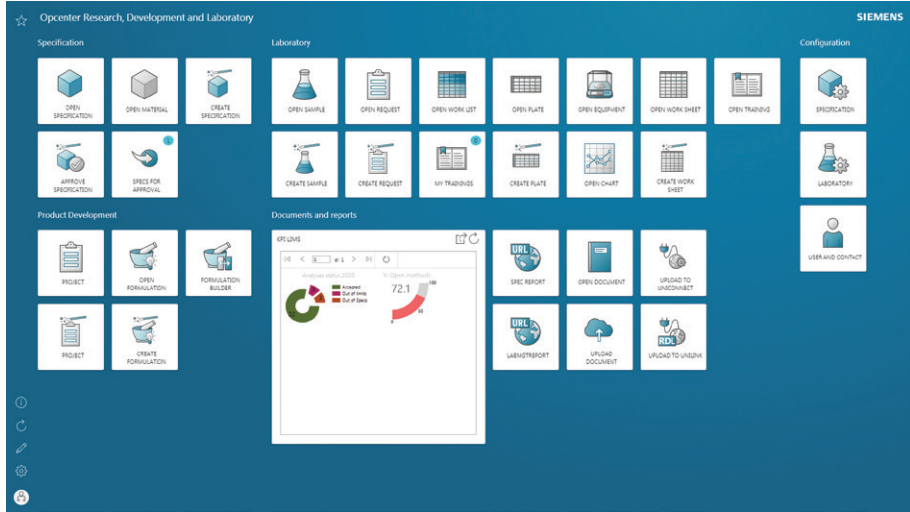
Adopting a harmonized user interface and improving integration capabilities

Benefits

- Faster time-to-market
- Rationalized and harmonized product
- Faster exchange of product data with partners
- Reduces administrative tasks and errors
- Well-maintained product quality and compliance
- Cost reduction in new product development and introduction
- Standardized intellectual property throughout the company

Summary

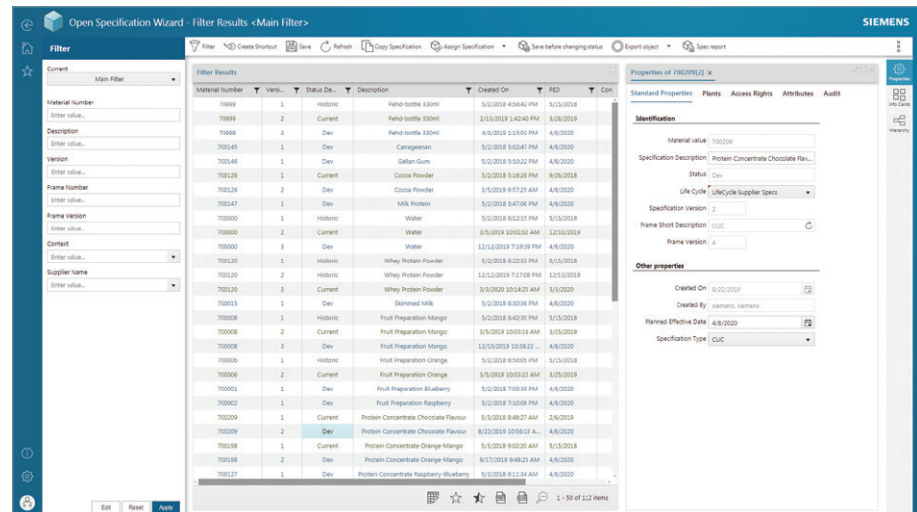
Opcenter™ Research Development and Laboratory (Opcenter RD&L) version 8.1 is the new release on the platform formerly known as the Simatic IT® research and development (SIT R&D Suite). Opcenter RD&L represents a major



What's new in Opcenter Research Development and Laboratory version 8.1

- Specification management
 - Data migration from Simatic IT Interspec 6.7 and extension to Data Migration Toolkit (DMT)
 - Glossary Synchronisation Module (GSM) support for specification objects
- Formulation builder improvements
 - Keyboard navigation, ordering of items, comfort view
 - Automatically calculates price, support for zero quantities
- Improved usability
 - Recall tab arrangement (enhanced work area)
 - Bulk creation of new versions for specifications
- Integration
 - Generic integration layer
 - Provides parameter results to Opcenter Execution Process (Opcenter EX PR)
 - Improved documentation for Siemens' web application collaboration (SWAC) integration and uniconnect
- Technology
 - Support for Microsoft® SQL Server 2019 and Edge Chromium
 - Support for database encryption

Learn more about the complete list of enhancements and features through the software release notes.



MOM user experience guidelines and policies

Opcenter RD&L v8.1 includes new company-standard web themes and policies. It provides the application user interface (UI) with a new look, easier navigation capabilities and better alignment with other Siemens Digital Industries Software and Manufacturing Operations Management (MOM) products for the benefit of the end user.

The homepage replaces the application launchpad and still offers end users full configurability for free definition of tiles, shortcuts and reporting widgets.

The Siemens web theme is implemented in the main application screens. The top of the application is the "header banner" and it displays the current wizard or the selected filter. The global navigation on the left border shows the back and home button, access to the favorites, generic information (like version, language), access to settings and also displays the current user. Inside the application frame, next to the new expandable filter panel, all the controls are in the contextual command bar. The vertical command bar hosts the commands that are interacting with the

objects in the panels. The embedded filter panel can be expanded using the corresponding toggle button. The complete iconography is renewed and aligned with Siemens standards: data types, commands and indicators. The left side panel displays the filters the user can access.

Generic integration layer

When customers implement Opcenter RD&L, they want to integrate Opcenter RD&L into their IT landscape, taking into account the following requirements:

- Usage of standard and open communication protocols.
- Little as possible knowledge required about underlying software technology
- No requirement for any proprietary adapters or additional integration middleware
- Easy to retrieve and update data
- Embedded security
- Proper documentation that provides an overview of all available and supported actions

Opcenter RD&L v8.1 adds the generic integration layer (GIL), a new integration layer that provides the following capabilities and benefits:

- Since it is based on the Open Data Protocol (OData) 4.0 standard (based on REST), no specific technological or software development skills are required to interact with Opcenter RD&L
- The ability to execute actions on the key data elements (request, specifications, samples) and the ability to retrieve all relevant operational data
- Proper security and authentication features that safeguards system integrity and respects data access rights

- An overview of all available actions through its metadata that can be accessed by any OData compliant viewer

The GIL will be the go forward answer for any integration with any other Siemens MOM application or any other Siemens application, including Mendix™ software. Furthermore, a wide variety of applications are starting to support the OData standard as well such as SAP, Microsoft Power BI and Microsoft Excel. Generic integration satisfies any customer's requirement to integrate Opcenter RD&L with any other software platform (that supports OData).

Siemens Digital Industries Software
[siemens.com/software](https://www.siemens.com/software)

Americas +1 314 264 8499
Europe +44 (0) 1276 413200
Asia-Pacific +852 2230 3333