



SIEMENS DIGITAL INDUSTRIES SOFTWARE

What's new in Opcenter EX MDD 8.6

Delivering a new RESTful API, an advanced framework and improved configurability

Benefits

- Delivers a new RESTful API as part of an enhanced framework
- Provides an enhanced in-line statistical process control module to enforce product quality
- Delivers a high-performance engine framework
- Supports a more optimized carrier operations page
- Provides a new KPI matrix for target value definition
- Supports greater control over consuming and issuing materials

Summary

Opcenter™ Execution Medical Device and Diagnostics (EX MDD) software serves as the foundation for leading global manufacturers and product innovators that want to enable rapid change, lean manufacturing, consistent quality output, rapid new product introduction (NPI) and higher profit margins. Integrated with enterprise resource planning (ERP), product lifecycle management (PLM), supply chain management (SCM), customer relationship management (CRM) and the shop floor, Opcenter Execution Medical Device and Diagnostics completes the technology infrastructure for manufacturing. Solutions are architected for global use, enabling worldwide visibility for real-time control and mission-critical operations.

Opcenter Execution Medical Device and Diagnostics 8.6, which is part of the Xcelerator™ portfolio, the comprehensive and integrated portfolio of software and services from Siemens Digital Industries Software, delivers powerful new enhancements to improve the application's capabilities and security. A new Representational state transfer application programming interface (RESTful API) facilitates streamlined interfacing and integration with the application. The in-line

SIEMENS

[siemens.com/opcenter](https://www.siemens.com/opcenter)

statistical process control (SPC) module has been enhanced to provide customers with greater control to proactively manage their product and process quality. A high-performance engine (HPE) framework supports significant transaction performance improvements when executing large item lists. The carrier operations page has been optimized to work more efficiently. Application configurability and flexibility have been enhanced via new features such as a key performance indicator (KPI) matrix and greater control over how to consume and issue materials. As a result, there is greater configurability when defining carrier positions. Key security enhancements, such as masking and encryption, provide an even higher level of security for the application. Finally, our expanded set of supported technologies offer access to the most up-to-date set of technologies to choose from.

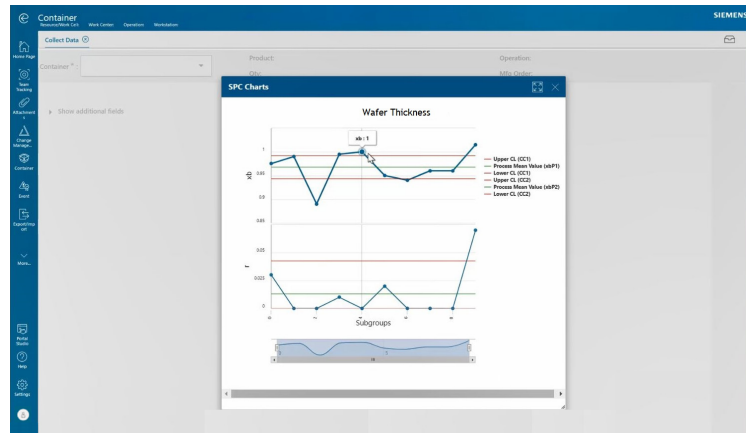
Capabilities

RESTful API

- Delivers a RESTful API framework that includes:
 - OpenAPI and OData schemas and metadata
 - Modeling transaction endpoints (with an OData interface)
 - Container transaction endpoints
 - Label transaction endpoints
- The API is dynamically generated based on the metadata

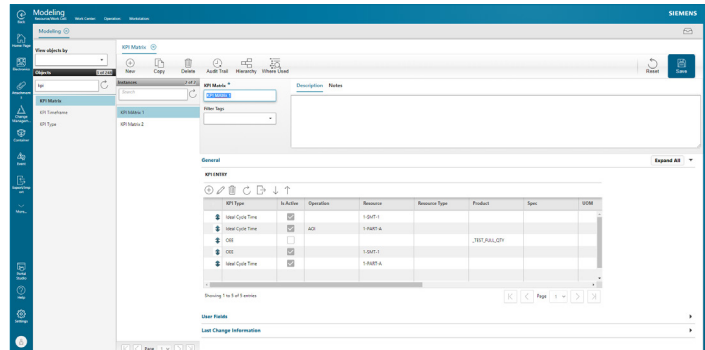
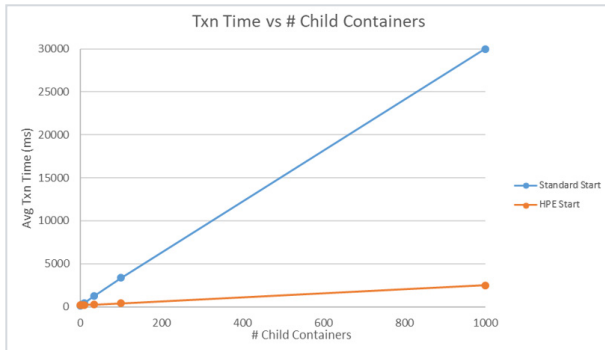
In-line SPC enhancements

- Supports the ability to automatically refresh charts via a configurable parameter
- Chart parameters can be dynamically set
- Allows displaying multiple charts on a page
- SPC charts support language translation of chart title, axis labels and legend
- Supports the ability to configure the location of the chart legend
- Adds Xbar/range chart



High-performance engine

- Available for Oracle
- Framework for creating high-performance transactions
- HPE transactions process large lists of items (example: list of containers) in a fraction of the time of a typical transaction
- Transaction processing is done through stored procedures on the database
- Delivers three out-of-the-box (OOTB) transactions built on the HPE framework: associate, disassociate, two-level start
- Provides spec-level configuration to require manually executing an associate or disassociate transaction prior to one of the following transactions: MoveIn, Move, MoveNonStd or Rework
- Also provides spec level configuration to automatically execute a disassociate transaction after the completion of one of the following transactions: MoveIn, Move, MoveNonStd or Rework



Carrier operations page enhancements

- Carriers can be assigned to a resource when moving to a step
- Page will respect the resource field in the line assignment settings
- The carrier scanned on the electronic procedures page is now passed to the carrier operations page when a task is assigned

KPI matrix

- Provides the ability to define target-level values for KPIs
- Target values can be assigned in the matrix to a product, resource, resource type, operation and spec
- The data is available for customer usage with a business intelligence or reporting product

Manufacturing order network for consuming materials

- Manage the relationship between consuming and consumed products
- Configure and enforce that a finished good product consumes only sub-products that are produced in a specifically defined manufacturing order or a set of manufacturing orders
- The container that should be issued to a consuming order must belong to a producing order that is defined in the material list from the consuming order

Security enhancements

- Enables option to encrypt a string field
- Enables option to mask a field in the user interface
- Supports encrypted connection to the database

Additional enhancements

- User experience
 - Updates warning messages with a yellow background
- Features
 - Extends carrier to support two-dimensional and three-dimensional positions
 - Allows for defining and enforcing the sequence of material consumption at a spec

Technology enhancements

- Chrome 90+
- Edge Chromium 90+
- Dynamics Barcode Reader 8.2.3

Siemens Digital Industries Software
[siemens.com/software](https://www.siemens.com/software)

Americas
 1 800 498 5351

Europe
 00 800 70002222

Asia-Pacific
 001 800 03061910

For additional numbers, click [here](#).