

DIGITAL INDUSTRIES SOFTWARE

What's new in Opcenter Scheduling SMT 16.1

Get started quickly with improved integration to ASM SIPLACE Pro

Benefits

- Easily gets line configuration data from ASM SIPLACE Pro
- Gets static settings directly from ASM SIPLACE Pro
- Supports optimized connection usage to ASM SIPLACE Pro
- Creates feeder types during part library import
- Delivers improved performance of multiline algorithm

Summary

Opcenter™ Scheduling SMT software is a planning and scheduling tool for the surface-mount technology (SMT) manufacturing industry that seamlessly connects the planner to the shop floor. Opcenter Scheduling SMT supports factory planners as they generate production schedules while adhering to a dynamic manufacturing environment and taking into account frequent, real-time changes that occur in the manufacturing stage, especially in high-mix, low-volume production or when introducing a new product.

This release offers an expanded integration with ASM SIPLACE Pro as well as improvements in the multiline algorithm and usability.

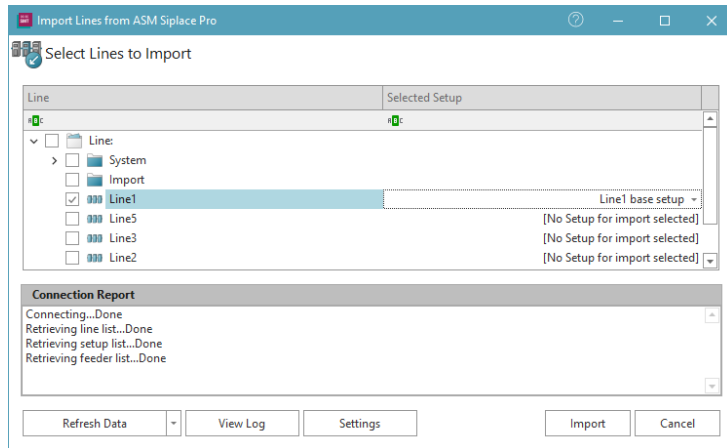
SIEMENS

[siemens.com/opcenter](https://www.siemens.com/opcenter)

Features

Line import from ASM Siplace Pro

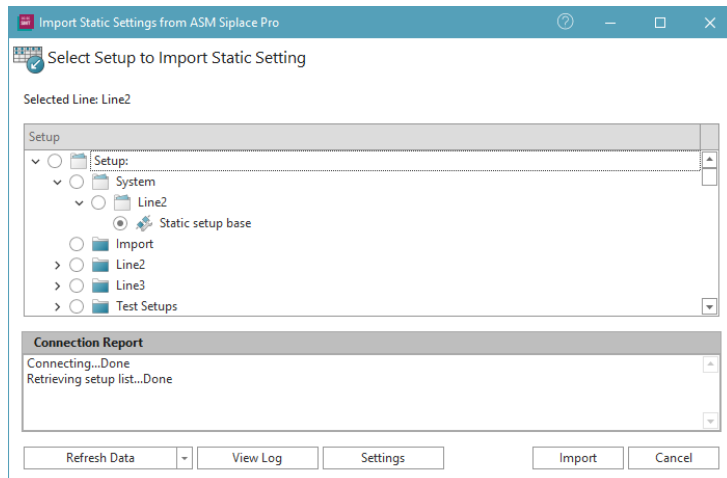
- Opcenter Scheduling SMT provides the capability to import the line configuration directly from ASM SIPLACE Pro
- The import covers the line structure as well as line station and feeder type information
- Import enables users to quickly create a valid initial model based on customer data



Lines can be imported from ASM SIPLACE Pro

Static setting import from ASM SIPLACE Pro

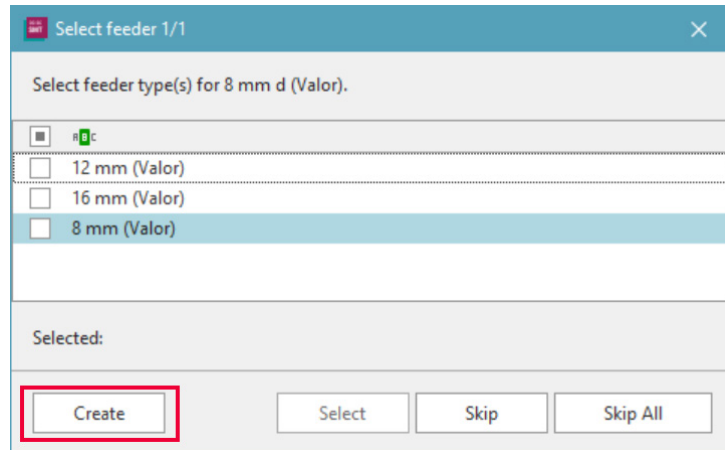
- Opcenter Scheduling SMT now provides the capability to import fixed components from ASM SIPLACE Pro as static setting
- This capability simplifies scheduling with correct restrictions regarding fixed components



Static setting can be imported from ASM SIPLACE Pro

Feeder type creation

- Opcenter Scheduling SMT now supports creation of feeder types during part library import
- This capability simplifies the challenge of missing feeder types
- Enables the option to assign any feeder in Configuration → General for this feature



Feeder types can be created during part library import

Multiline improvements

- Optimized performance of calendar data handling
- When optimizing for group count, followup work orders of a product are now preferably put into the same group

Siemens Digital
Industries Software
[siemens.com/software](https://www.siemens.com/software)

Americas
1 800 498 5351

Europe
00 800 70002222

Asia-Pacific
001 800 03061910

For additional numbers,
click [here](#).