



# Virtual Prototyping with Structural, Thermal and Flow Simulation

Jon Sutcliffe  
Global Technical Enablement  
24<sup>th</sup> February 2021



Unrestricted | © Siemens 2021 | 2021-02-15 | Siemens Digital Industries Software | Where today meets tomorrow.



1

# Agenda

Structural / Thermal Simulation  
Motion Simulation  
Flow Simulation

Unrestricted | © Siemens 2021 | 2021-02-15 | Siemens Digital Industries Software | Where today meets tomorrow.



2

# SIEMENS

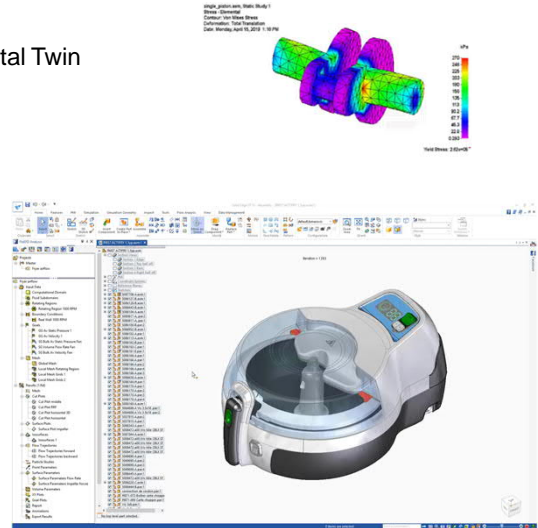
## Simulation Addressing Industry Challenges

Enabling engineers to perform their own validation on the Digital Twin created in Solid Edge

Solid Edge Simulation uses the same underlying geometry and user interface as all Solid Edge applications

Simcenter FLOEFD for Solid Edge is also built right inside the Solid Edge UI to provide a consistent user experience.

**Robust, proven and easy to use for any Solid Edge user who has a fundamental understanding of FEA principles**



Unrestricted | © Siemens 2021 | 2021-02-15 | Siemens Digital Industries Software | Where today meets tomorrow.

SIEMENS

3

## Solid Edge Portfolio Simulation

### Solid Edge Portfolio

#### Simulation

Simulation for design validation and optimization for design engineers

#### Mechanical Simulation

- Strength of structure
- Vibration
- Heat transfer
- Motion

Solid Edge Simulation

#### Fluid Flow Simulation

- Fluid flow
- Heat convection/conduction

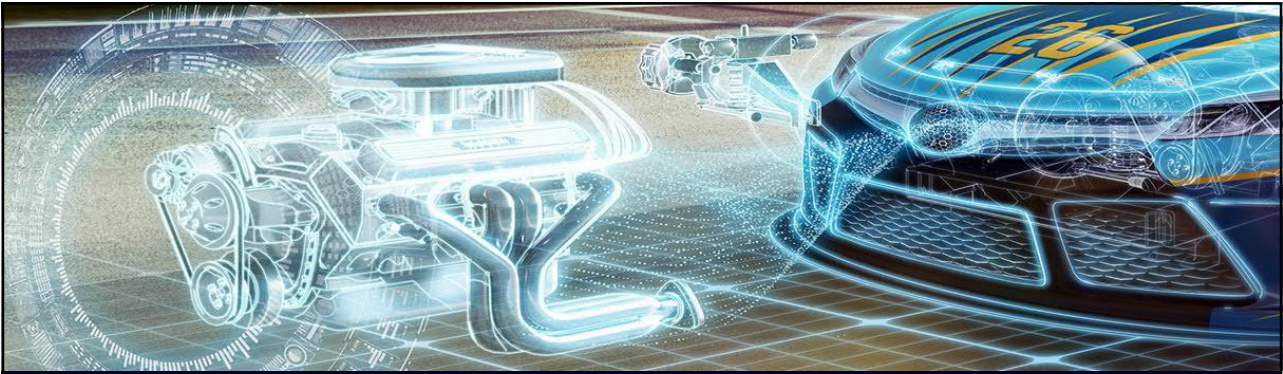
FLOEFD for Solid Edge

Unrestricted | © Siemens 2021 | 2021-02-15 | Siemens Digital Industries Software | Where today meets tomorrow.

SIEMENS

4

# SIEMENS



## Structural / Thermal Simulation

Unrestricted | © Siemens 2021 | 2021-02-15 | Siemens Digital Industries Software | Where today meets tomorrow.

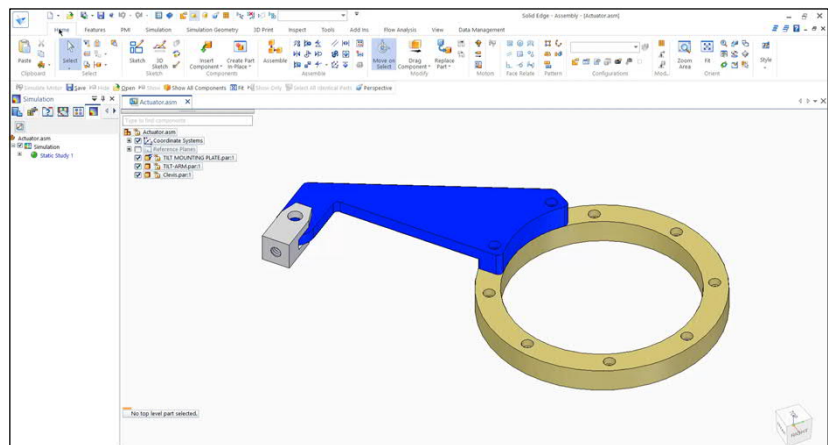
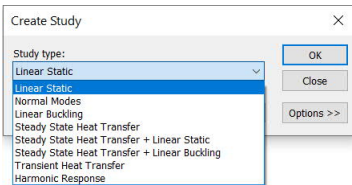
SIEMENS

5

### Structural and Thermal Simulation

Simulation types supported:

- Linear static
- Normal modes
- Buckling
- Thermal (including transient)
- Harmonic response (vibration)






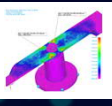
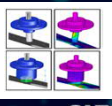
Unrestricted | © Siemens 2021 | 2021-02-15 | Siemens Digital Industries Software | Where today meets tomorrow.

SIEMENS

6

# SIEMENS

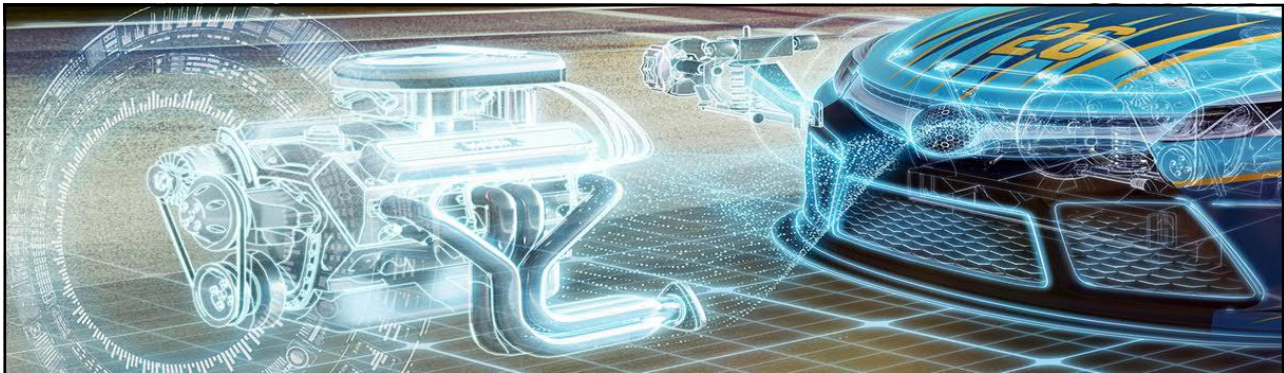
## Solid Edge Simulation Capabilities

<b>Automatic Finite Element Model Creation</b>	<ul style="list-style-type: none"> <li>• Shell &amp; Solid tetrahedral elements</li> <li>• Local mesh size control</li> <li>• Based on Femap meshing technology</li> </ul>	
<b>Full Boundary Condition Support</b>	<ul style="list-style-type: none"> <li>• Geometry based constraints &amp; loads</li> <li>• Handles help define direction and orientation</li> <li>• Quick Bar input options</li> </ul>	
<b>Powerful Analysis Capability</b>	<ul style="list-style-type: none"> <li>• Industry standard solver - Simcenter Nastran</li> <li>• Statics, normal modes, buckling &amp; thermal analysis</li> <li>• Automatic element quality checks</li> </ul>	
<b>Comprehensive Post Processing</b>	<ul style="list-style-type: none"> <li>• Fringe, color plots and contours</li> <li>• Displacement, animation and mode shapes</li> <li>• Report generation</li> </ul>	
<b>Synchronous Technology with model associativity</b>	<ul style="list-style-type: none"> <li>• Remove unnecessary features</li> <li>• Change geometry shape quickly &amp; easily</li> <li>• Mesh automatic update</li> </ul>	

Unrestricted | © Siemens 2021 | 2021-02-15 | Siemens Digital Industries Software | Where today meets tomorrow.

**SIEMENS**

7



## Simulation Demo

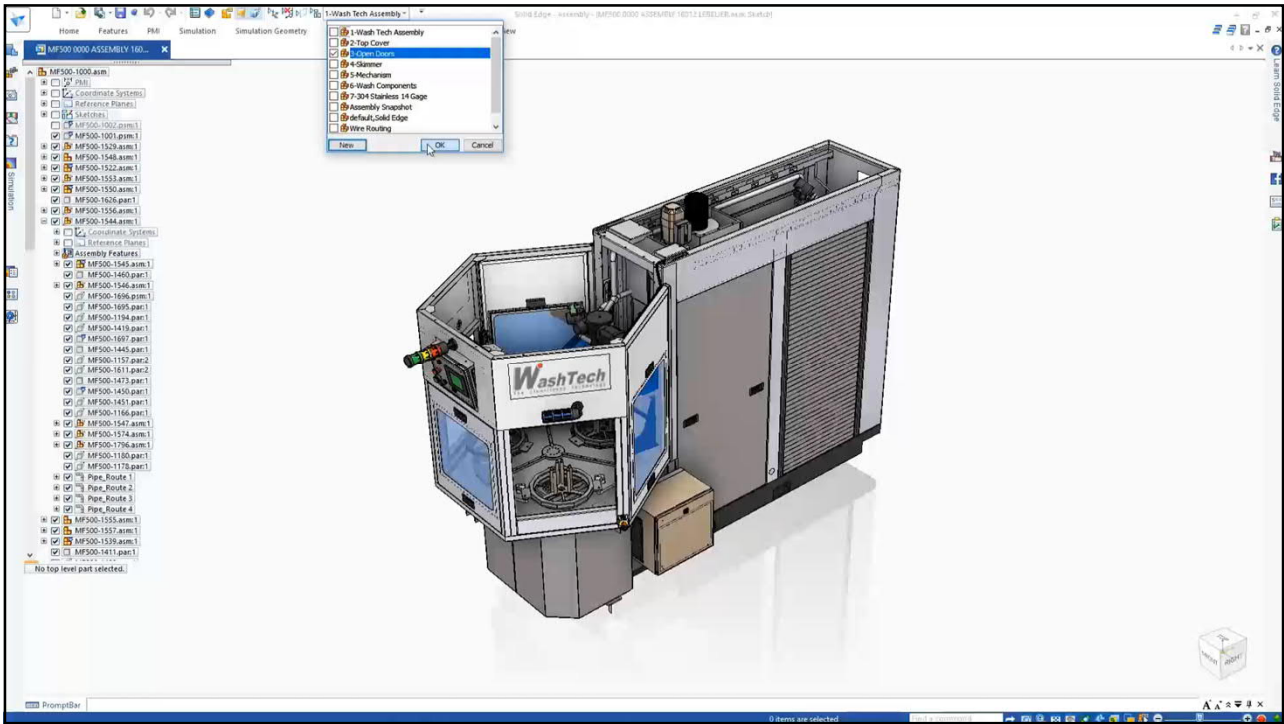
Unrestricted | © Siemens 2021 | 2021-02-15 | Siemens Digital Industries Software | Where today meets tomorrow.

**SIEMENS**

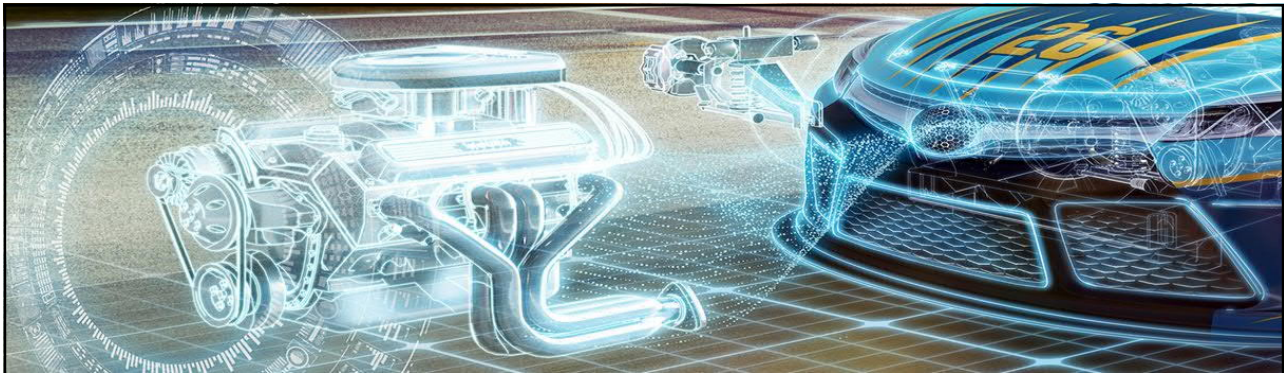
8



# SIEMENS



9



## Motion Simulation

Unrestricted | © Siemens 2021 | 2021-02-15 | Siemens Digital Industries Software | Where today meets tomorrow.

SIEMENS

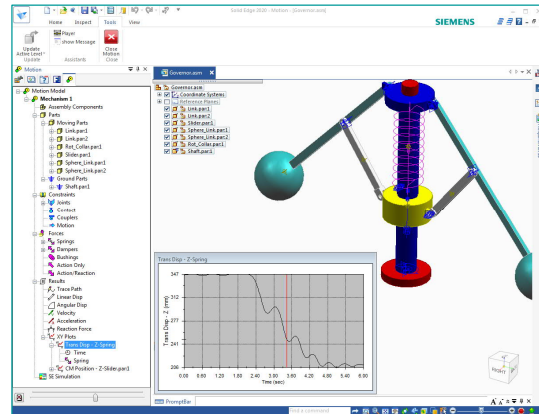
10

# SIEMENS

## Motion Simulation

Fully embedded motion simulation to validate mechanisms

- Size motors and actuators
- Determine power consumption
- Determine boundary conditions for stress analysis
- Friction
- Force Transmission
- Spring and Damper Stiffness
- Hydraulic actuators
- Reduce vibrations
- Understand unbalance effects on mechanisms
- Understand bearing loads



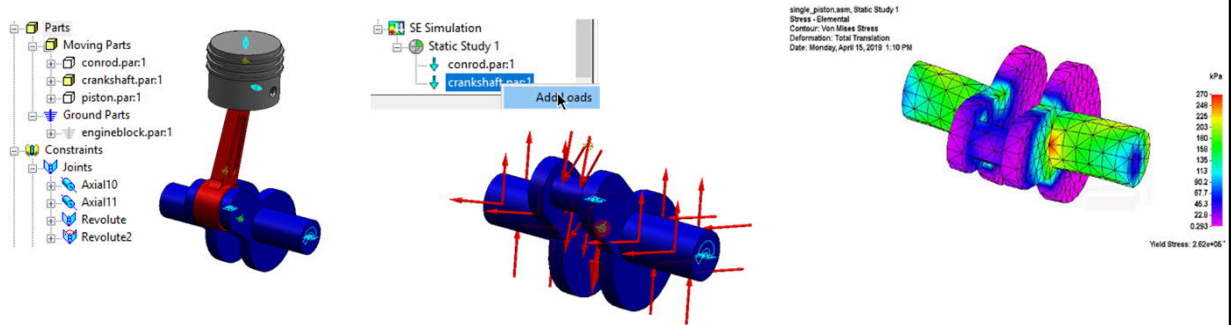
Unrestricted | © Siemens 2021 | 2021-02-15 | Siemens Digital Industries Software | Where today meets tomorrow.



11

## Motion Simulation

Users can utilize forces from Motion Simulation as input to Solid Edge Simulation static studies

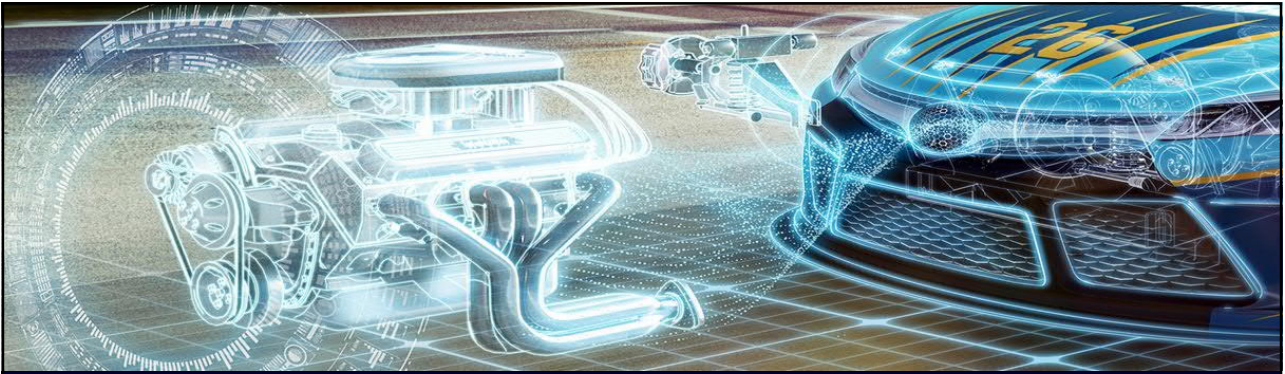


Unrestricted | © Siemens 2021 | 2021-02-15 | Siemens Digital Industries Software | Where today meets tomorrow.



12

# SIEMENS

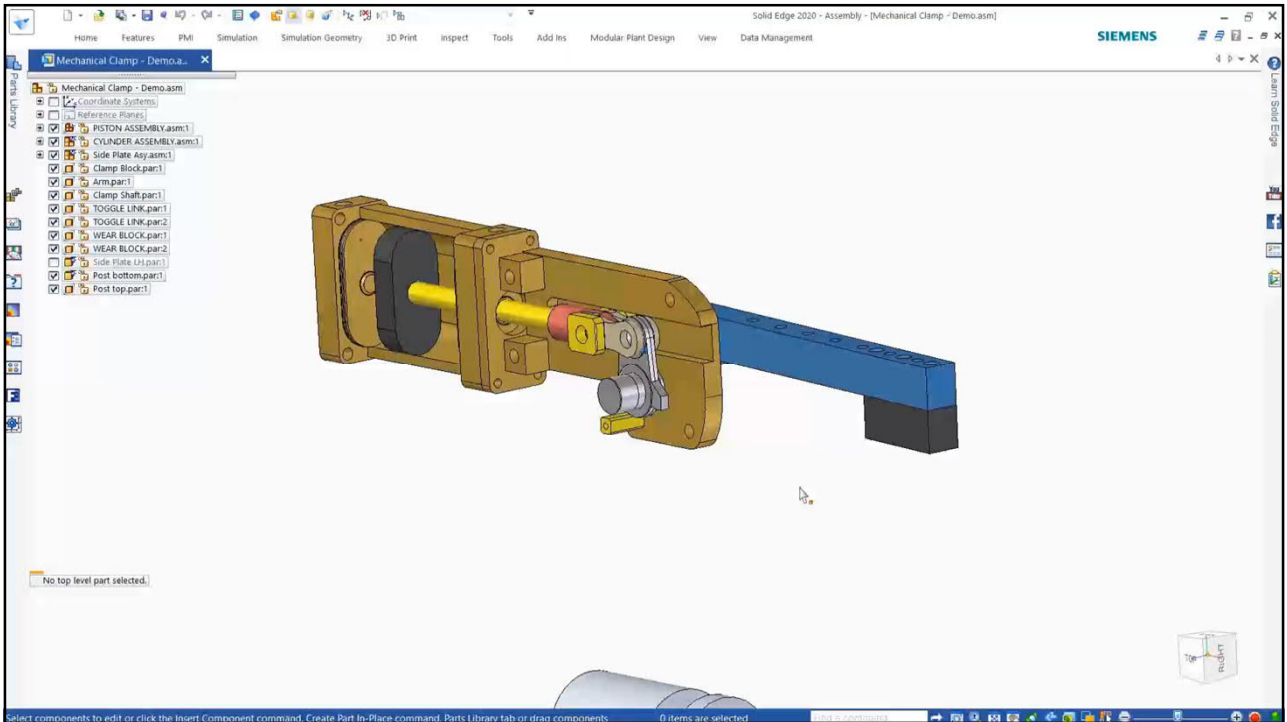


## Motion Simulation Demo

Unrestricted | © Siemens 2021 | 2021-02-15 | Siemens Digital Industries Software | Where today meets tomorrow.

SIEMENS

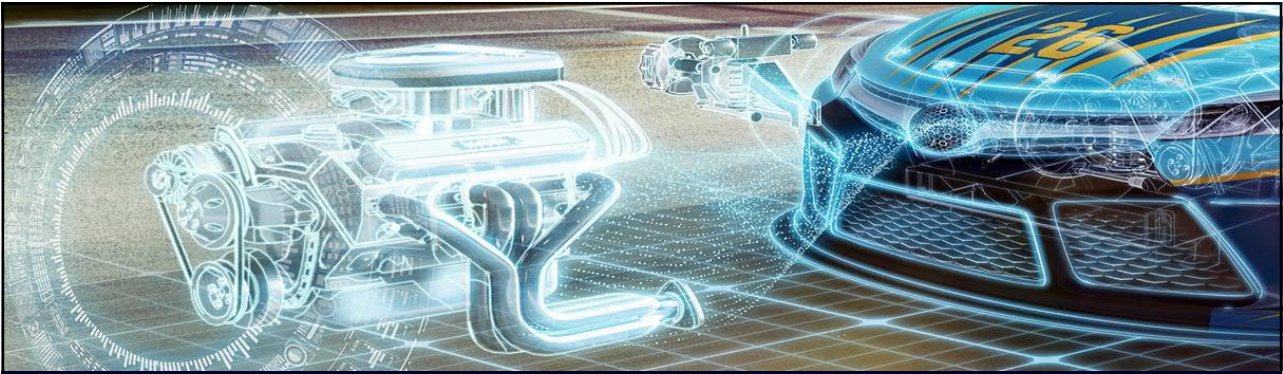
13



14



# SIEMENS



## Integrated CFD: FLOEFD for Solid Edge

Unrestricted | © Siemens 2021 | 2021-02-15 | Siemens Digital Industries Software | Where today meets tomorrow.

SIEMENS

15

### Simcenter FLOEFD for Solid Edge

#### General Purpose CFD

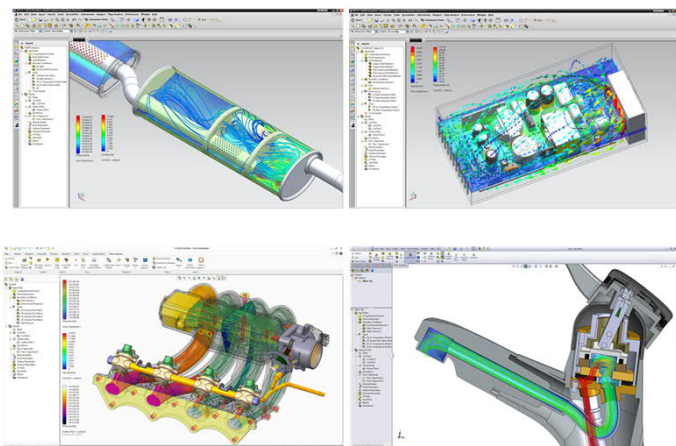
- Fluid flow and Heat transfer
- Internal & External flow
- Combustion and high-speed flow
- Mixing and rotational flow

#### Embedded in Solid Edge

- No need to transfer geometries
- Leverage parametric CAD
- Robust mesher & solver
- Parametric Optimization

#### Unique Features

- Ease-of-use and Accuracy
- No need to model the fluid volume
- Laminar/Transitional/Turbulent flow



Unrestricted | © Siemens 2021 | 2021-02-15 | Siemens Digital Industries Software | Where today meets tomorrow.

SIEMENS

16



# SIEMENS

## Typical FLOEFD Applications

### Aerospace

- Aerodynamics, Avionics, Fuel Handling, Cabin AC, LEDs

### Automotive

- VTM, Aero, ECU, Hydraulics, Lubrication, Lighting, Turbomachinery

### Electronics

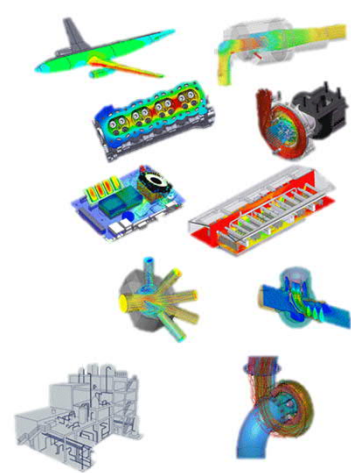
- PCB, Heatsinks, Fans, LEDs, System Level Analysis

### HVAC

- Office Comfort, Fire & Smoke, Contamination, Ducting, Fans

### Oil/Gas

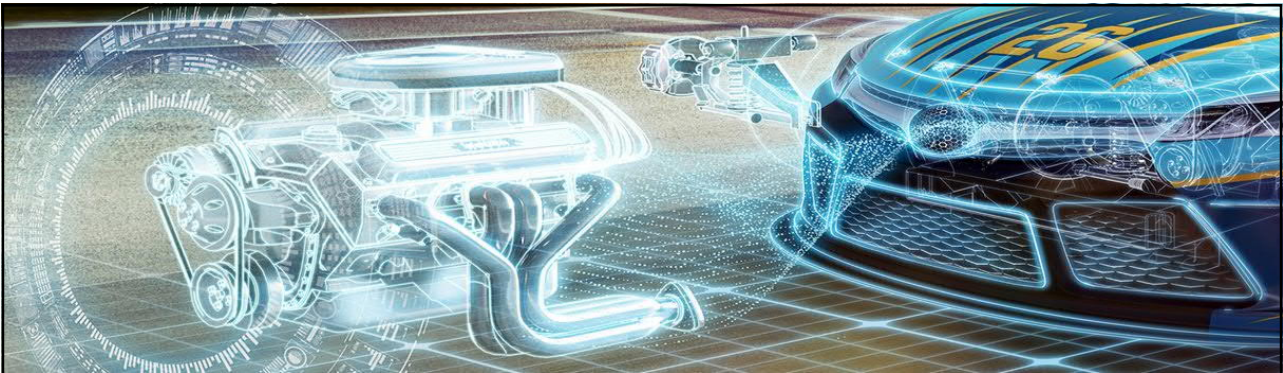
- Piping, Pumps, Valves, Heat Exchangers, Accumulators, Cyclones



Unrestricted | © Siemens 2021 | 2021-02-15 | Siemens Digital Industries Software | Where today meets tomorrow.



17



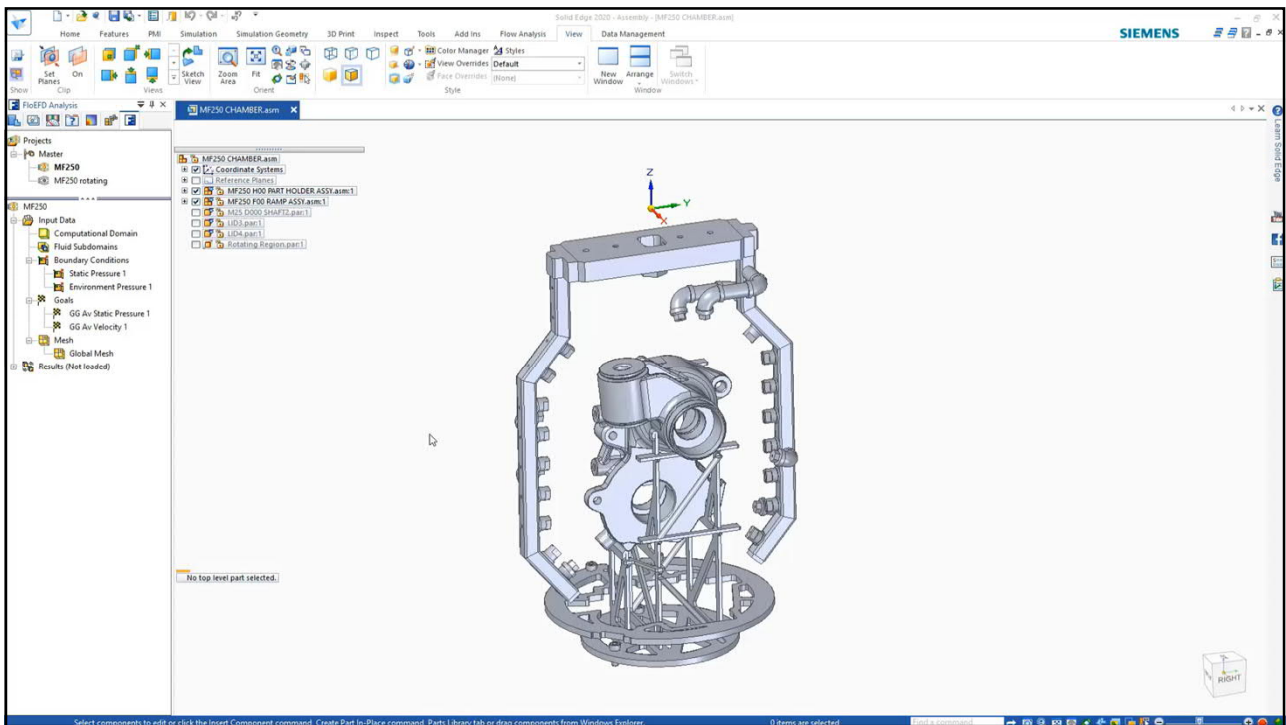
## Flow Simulation Demo

Unrestricted | © Siemens 2021 | 2021-02-15 | Siemens Digital Industries Software | Where today meets tomorrow.



18

# SIEMENS

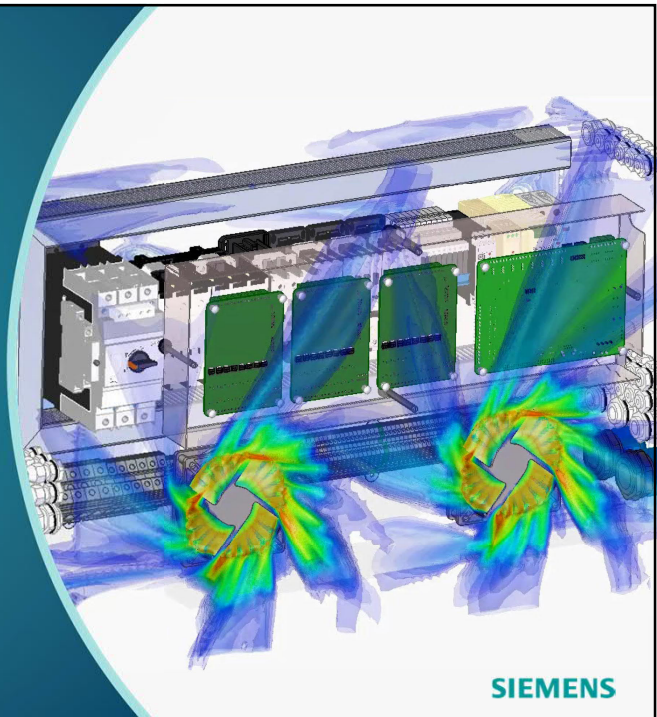


19

## Solid Edge Simulation

Robust and proven structural, thermal, motion and flow simulation technologies.

Digitally validate designs by subjecting parts and assemblies to real-world conditions



20



# | Thank You

Jon Sutcliffe  
Director of Global Technical Enablement  
[jon.sutcliffe@siemens.com](mailto:jon.sutcliffe@siemens.com)

Unrestricted | © Siemens 2021 | 2021-02-15 | Siemens Digital Industries Software | Where today meets tomorrow.

