

SIEMENS
Ingenuity for life

What's new in Siemens Opcenter Execution Electronics 8.1

Electronics extends throughout the electronics value chain, including printed circuit board (PCB), mechanical and box-build processes. The solution includes best-in-class manufacturing operations management (MOM) capabilities from Siemens Digital Industries Software and Valor, including: manufacturing execution, quality management, materials management, planning and scheduling and manufacturing intelligence, with direct connectivity to machines and production lines.

Improved new product introduction (NPI) integration, additional out-of-the-box functionality for PCB, panel and serial number management and operational reporting make Siemens Opcenter Execution Electronics 8.1 more efficient, easier to use and improves operator productivity.

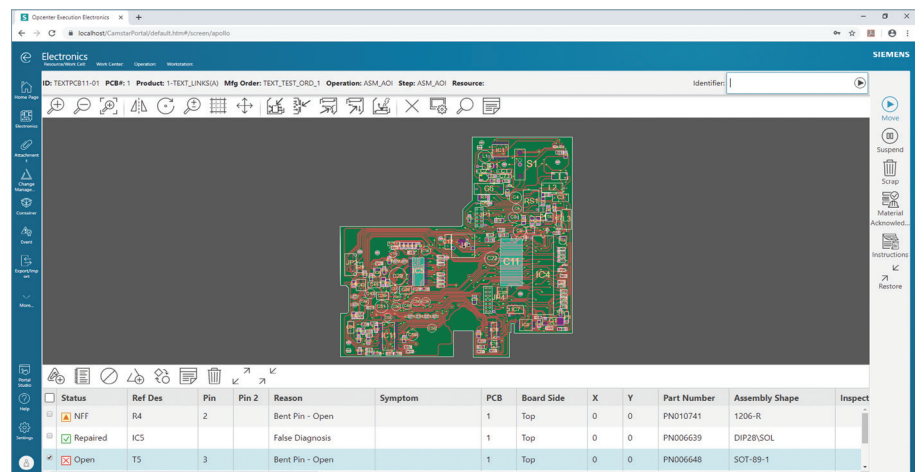
Enhancing the user experience and productivity

Benefits

- Enhance user experience and productivity
- Provide seamless flow of NPI data and works instructions from NPI to MES
- Improve NPI and shop floor efficiency and quality
- Improve production quality
- Provide out-of-the-box production visibility

Summary

Siemens Opcenter™ Execution Electronics software is a full digital manufacturing solution for the electronics industry. Built on an industry-leading manufacturing execution system (MES) platform for the medical device and semiconductor industries, Siemens Opcenter Execution



What's new in Siemens Opcenter Execution Electronics 8.1

Features

Valor Process Prep work instructions

Valor™ Process Prep software work instructions are available in the Siemens Opcenter Execution Electronics production client for guided operations and graphical visualisations.

Support for multiple serial numbers per container

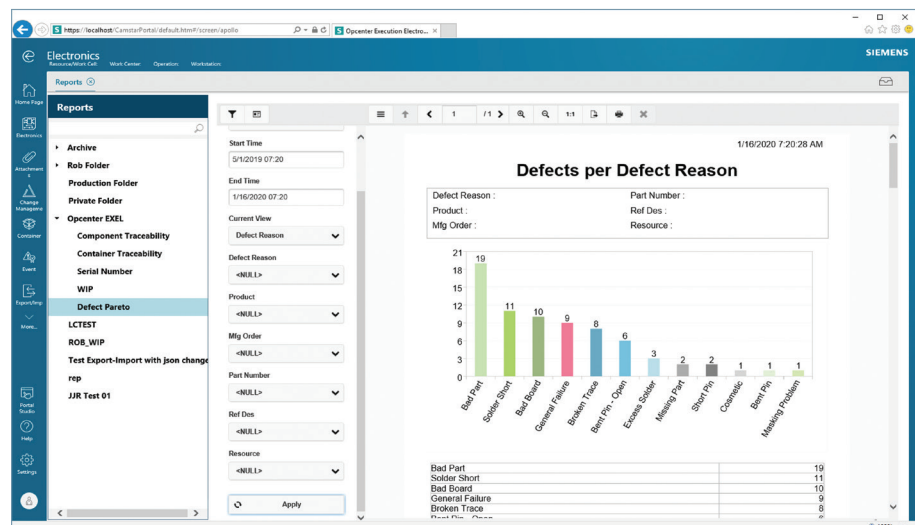
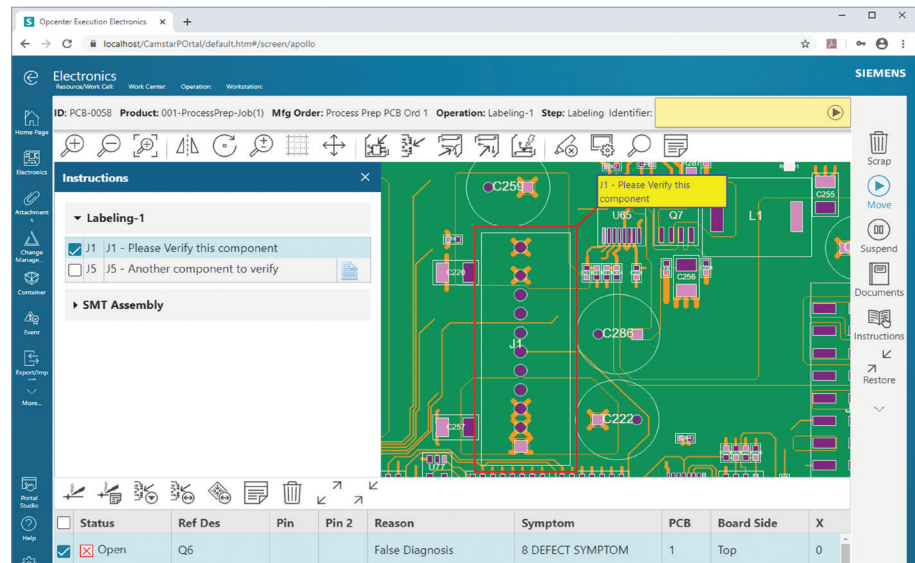
- There is a new multiple serial numbers option. Siemens Opcenter Execution Electronics can be configured to use up to three serial numbers per PCB or box. The application supports searching by any of the serial numbers
- One use case for this functionality is to support panels with mixed physical PCB and related serial numbers

Identifying required recipe for a resource spec

- Ability to define a recipe for a resource and define a matrix to enable the application to automatically select the appropriate recipe based on product, resource and spec
- Ability to assign a recipe plan to a product family, in addition to a product and manufacturing order. Operator can enter selection criteria on the resource setup page for automatic recipe selection
- Addition of following Open Manufacturing Language (OML) configuration options configurable on resource for move in error handling:
 - Enable move in retry, move in retry attempts, move in retry interval (milliseconds)

Operational reporting

- Five operational reports from the new Siemens Opcenter Execution Intelligence
 - Component traceability
 - Container traceability
 - Serial number
 - Work-in-process (WIP)
 - Defect Pareto



Configurable "require resource at move in" on a spec

There is an option to enforce resource selection upon move in for a step that is configured with a resource group and has the required option selected.

Framework and UX enhancements

Improved and standardized look, feel and usability.

Siemens Digital Industries Software
[siemens.com/software](https://www.siemens.com/software)

Americas +1 314 264 8499

Europe +44 (0) 1276 413200

Asia-Pacific +852 2230 3333

© 2020 Siemens. A list of relevant Siemens trademarks can be found [here](#). Other trademarks belong to their respective owners.