

SIEMENS

Ingenuity for life

Mastertrim 14.2

Using colors, cross-sections and labeling to generate precise design drawings

Benefits

- Automatically generate clear and accurate design drawings using colors, cross-sections and labeling
- Predict tension early in the design phase to allow corrections to be made before physical prototypes are created
- Use Teamcenter single sign-on capability to reduce the time it takes to upload data from Mastertrim to Teamcenter by about 50 percent
- Save time exporting files directly to Teamcenter instead of manually uploading them from a local disk
- Communicate and iterate a complete seat definition without creating a physical prototype

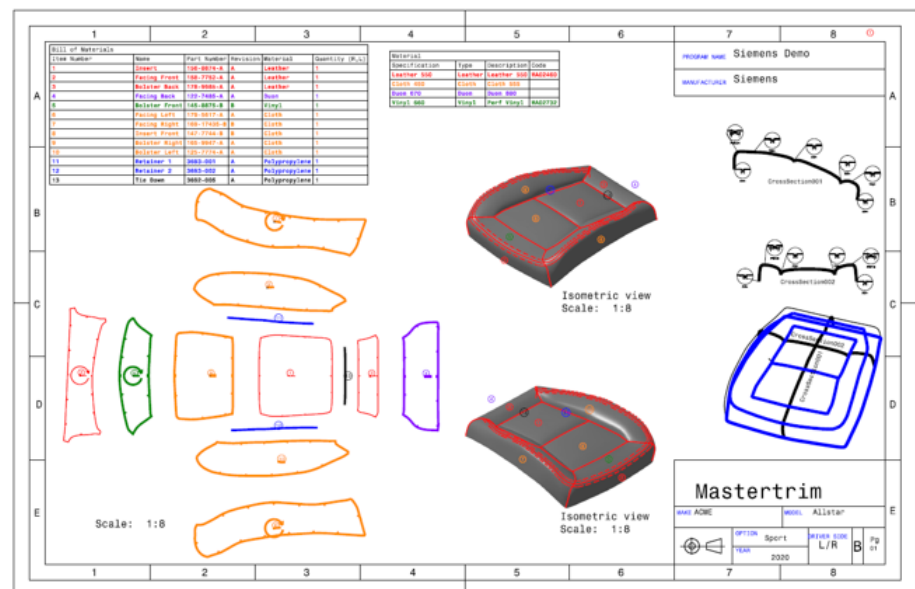
Summary

The new release of the Mastertrim™ portfolio provides enhancements to documentation and coloring, producibility displays, Teamcenter® software integration and the user interface (UI). These improvements provide better support for the user's custom documentation requirements. In addition, these updates improve communication tools to further increase efficiency between design and manufacturing. The Teamcenter integration builds on the

enterprise solution offering. Using Mastertrim 14.2 can provide great value to any company in an industry that is involved in manufacturing highly complex seat trim designs, especially ones that focus on automotive processes.

Using new coloring options and enhanced isometric views to document design

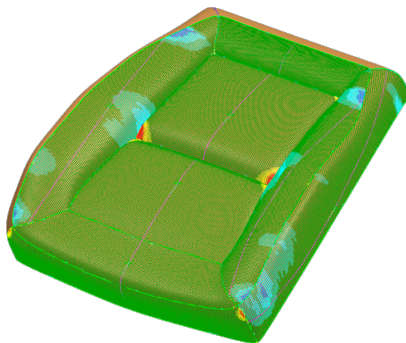
Prior to the release of Mastertrim 14.2, the customized, detailed drawings that were created as part of the seat trim engineering process were often inaccurate and time-consuming. The documentation enhancements to drawing color options and detailed views in Mastertrim 14.2 allow users to automatically generate clear and accurate drawings that describe designs using colors, cross-sections and labeling. Users can place bill-of-materials (BOM) table balloons directly on the 3D view.



Mastertrim 14.2

Features

- Color pieces, text and balloons per material and type
- Place BOM table balloons and cross-sections directly on the 3D view
- Predict tension early in the design phase
- Publish data to Teamcenter on an ad hoc basis
- Customize individual notches generated from rules
- Select multiple material colors



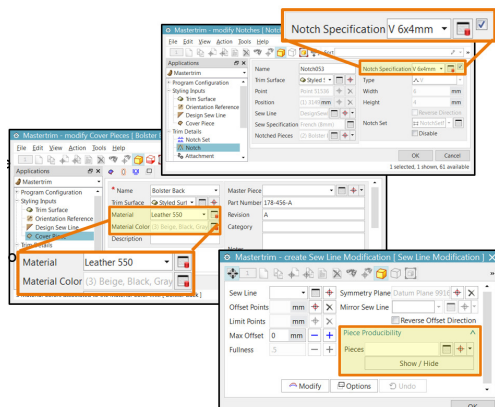
In addition, Mastertrim enables users to color pieces, text and balloons per material and type. These enhancements to Mastertrim 14.2 permit users to place cross-section details directly on the 3D view. All of these added features support users in their efforts to create more accurate and comprehensive seat trim documentation to help viewers visually understand the design.

Providing an improved producibility display

Mastertrim 14.2 has an enhanced producibility display that provides a more accurate display of stretching. This allows users to predict where areas of extra tension might be applied to a piece due to the design definition. In addition to the previous simulation display that predicted wrinkling, this improvement helps users predict tension early in the design phase, allowing corrections to be made before physical prototypes are created.

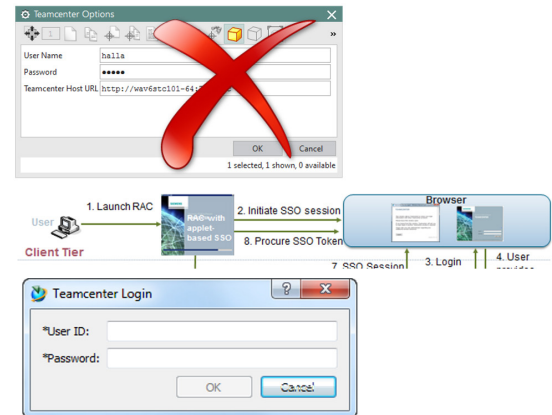
User interface enhancements

Defining a design requires an interface that supports customization and flexibility to fit the user's needs. Mastertrim 14.2 provides users with the ability to view producibility in the sew line modification utility so changes can easily be made with producibility in mind. It also allows for the customization of individual notches generated from rules and multiple material color selection per piece. With these UI enhancements, users are able to better communicate and iterate throughout the complete seat definition without creating a physical prototype.



Teamcenter integration

Users like to publish data to Teamcenter in a custom workflow and location that is unique to their environment. Mastertrim 14.2 provides users with the ability to reduce the time it takes to upload data from Mastertrim to



Teamcenter by around 50 percent using the Teamcenter single sign-on functionality. This improvement allows users to save time exporting files directly to Teamcenter instead of manually uploading them from a local disk. In addition, the new ad hoc publishing capability allows Mastertrim exports to be published to custom locations within the user's Teamcenter environment.

Siemens PLM Software
www.siemens.com/plm

Americas +1 314 264 8499
 Europe +44 (0) 1276 413200
 Asia-Pacific +852 2230 3308

© 2018 Siemens Product Lifecycle Management Software Inc. Siemens, the Siemens logo and SIMATIC IT are registered trademarks of Siemens AG. Camstar, D-Cubed, Femap, Fibersim, Geolus, GO PLM, I-deas, JT, NX, Parasolid, Simcenter, Solid Edge, Syncrofit, Teamcenter and Tecnomatix are trademarks or registered trademarks of Siemens Product Lifecycle Management Software Inc. or its subsidiaries in the United States and in other countries. All other trademarks, registered trademarks or service marks belong to their respective holders. 68409-A5 1/18 A