

DIGITAL INDUSTRIES SOFTWARE

What's new in Opcenter Execution Electronics 8.9

Improving integration with Valor Process Preparation and technology enhancements

Benefits

- Improve integration with Valor Process Preparation and technology enhancements
- Seamlessly provide documentation and work instructions from NPI to MES
- Enhance user guidance and process security
- Simplify creation of standard and custom reports
- Optimize reporting performance
- Improve shopfloor efficiency and production quality

Summary

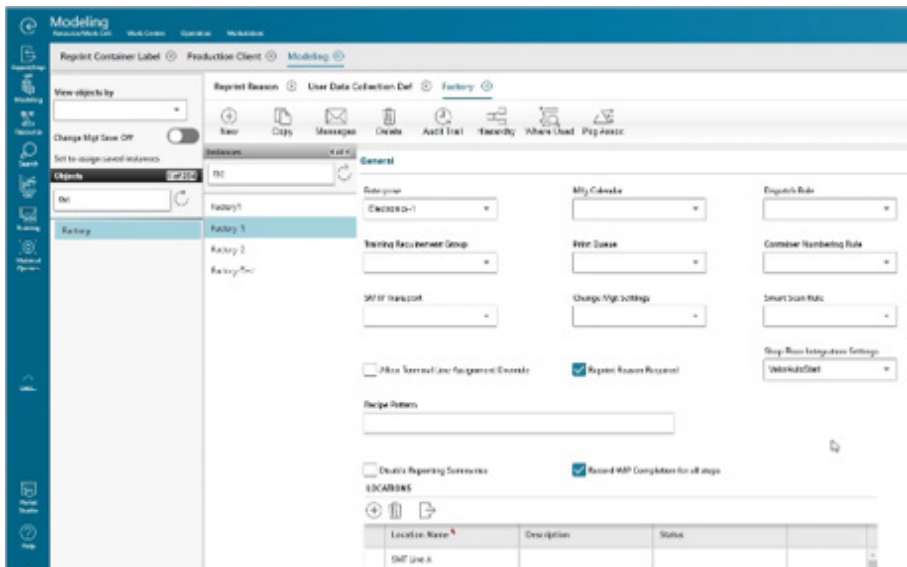
Opcenter™ Execution Electronics software is a full digital manufacturing solution for the electronics industry. It is built on an industry-leading manufacturing execution system (MES) for the medical device and semiconductor industries. Opcenter Execution Electronics is used in the electronics value chain for printed circuit board (PCB), mechanical and box-build processes. Opcenter Execution Electronics is part of the Siemens Xcelerator portfolio, the comprehensive and integrated portfolio of software, hardware and services from Siemens Digital Industries Software.

The solution includes best-in-class manufacturing operations management (MOM) capabilities such as manufacturing execution, quality management, materials management, planning and scheduling and manufacturing intelligence. This facilitates direct connectivity to machines and production lines.

Electronics manufacturers can rapidly provide new product introduction (NPI) and reduce time-to-market, which increases their competitive edge in a rapidly changing, consumer-driven marketplace.

Opcenter Execution Electronics version 8.9 provides an improved integration with Valor™ Process Preparation software, technology improvements and new features that increase efficiency in electronic production.

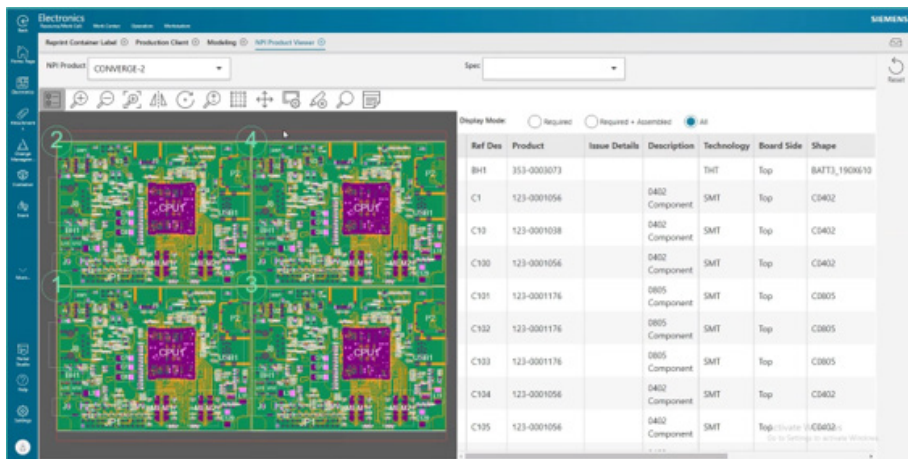
- **Require reason for container label reprint and electronic device history records (eDHR) extension**
 - Configure that a reprint reason is required if a container label is reprinted
 - Prompt the user to specify the reason when performing a transaction if required
- **Scheduling route and route step**
 - Introduce a new scheduling route entity for defining milestone steps and scheduling details with Opcenter advanced planning and scheduling (APS) software/Opcenter Scheduling software
 - Configure different scheduling routes versus enterprise resource planning (ERP) routes, proving greater flexibility
- **Summary tables and related enhancements for electronics**
 - Enhanced work-in-process (WIP) summary
 - Defect history enhancement
 - Box build genealogy enhancement



- **Automatic defect generation for user data collections**
 - Specify if a defect reason is required for value data points in a data collection if the collected value is outside limits

- **New product viewer page**

- View NPI products as they appear in the production client by selecting the product
- Verify all aspects of the NPI job including documentation, instructions and custom views prior to processing the containers on the shop floor



- **Manufacturing order reassignment enhancements**

- Add ability to select multiple containers when scanning in a manufacturing order name in the identifier field

- **Production client enhancements**

- Add configuration for status header bar
- Update serial number entry to support showing in process containers
- Update repair advisor user interface (UI) to also include and show defect history

- **Online traveler enhancements**

- **REST API enhancements**

- Deliver expanded set of shop floor transaction endpoints with an open data protocol (oData) interface

- **Technology enhancements**

- Chrome 99+
- Edge Chromium 99+
- Angular 13
- VMWare 7.0 update 3

Important note

If you are upgrading from a previous version of Opcenter Execution Electronics and want to keep your existing metadata (InSite.mdb), you must first do the following steps:

1. Contact support and provide your existing InSite.mdb file
 - a. The MDB will then be upgraded to the current version retaining any customizations implemented and provided back
2. Copy the upgraded MDB file to the metadata folder of the Opcenter Execution Electronics installation folder
3. Proceed with the installation of Opcenter Execution Electronics following the instructions

Siemens Digital Industries Software
[siemens.com/software](https://www.siemens.com/software)

Americas
 1 800 498 5351

Europe
 00 800 70002222

Asia-Pacific
 001 800 03061910

For additional numbers, click [here](#).