

# What's new in Opcenter Execution Semiconductor 8.5

## Enhancing SPC functionality, simplifying configurations and improving capabilities

### Benefits

- Enhance SPC functionality, simplify configurations and improve capabilities
- Deliver HPE framework and transactions to support high-volume manufacturing needs
- Improve single item tracking to support enhanced two-level lot processing
- Enhance semiconductor products by driving flexibility, efficiency, user experience and functionality
- Resolve problem reports

### Summary

Opcenter™ Execution Semiconductor software (formerly known as the Camstar™ Semiconductor suite) is a comprehensive manufacturing execution system (MES) that enables both wafer fabrication factories and assembly and test sites to meet traceability requirements, control production and integrate the shop floor into their enterprise resource planning (ERP) system and extended enterprise. Opcenter Execution Semiconductor, which is part of the Xcelerator™ portfolio, the comprehensive and integrated portfolio of software and services from Siemens Digital Industries Software, addresses your needs on a configurable, scalable and modular platform for production.

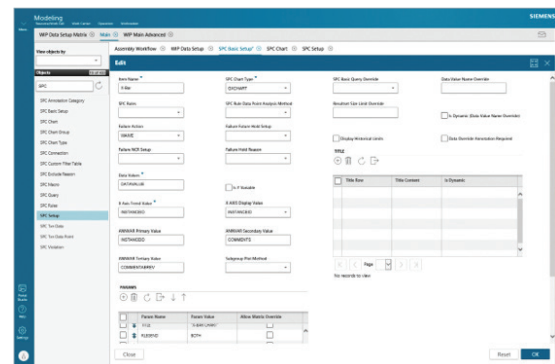
This release provides enhancements to statistical process control (SPC) configuration and capabilities, new high-performance engine (HPE) framework and transactions, single item tracking enhancements for two-level lots and additional semiconductor improvements.

### Features

#### Enhancements to SPC

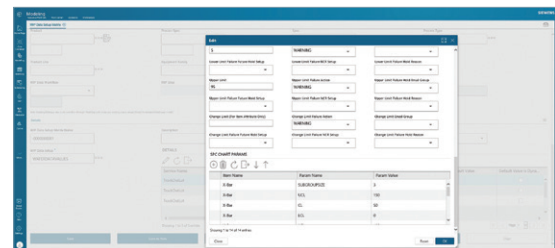
##### SPC basic setup extensions

- Enables override configuration of a unique query for each chart
- Defines query parameters for any unique query
- Extends basic SPC setup usability to cover all cases



#### WIP data setup matrix extensions

- Work-in-process (WIP) data setup matrix extended to allow SPC chart parameters to override SPC setups configured in the WIP data setup matrix



# What's new in Opcenter Execution Semiconductor 8.5

- Provides a single matrix to configure specific WIP data collections with SPC chart parameters
- Supports execution for TrackIn, TrackOut and MoveOut transactions within the product

Requires annotations when data points are modified or excluded

- Configuration supports enforcing annotations when data points are modified or excluded



Extended configuration to enhance data tip information

- Enables extra information provided in SPC query to be shown in SPC chart data tip

Dynamic chart titles for SPC

- Ability to configure and resolve dynamic SPC chart titles
- Dynamic chart titles provide the ability to be more informative for the three SPC titles

## High-performance engine (HPE) (technical release preview)

- Framework that supports the creation of high-performance transactions to support high-volume transaction types
- HPE transactions process large lists of items (for example, list of containers or start a parent lot with 5,000 child lots) in a fraction of the time of a typical transaction
- Transaction processing is done with stored procedures on the database

- Deliver four out-of-the-box HPE transactions built on the HPE framework: associate, disassociate, two-level start, two-level start simple

Note: The HPE framework should not be run with the current replication mechanism to the operational data store (ODS).

## Single item tracking enhancements

Ability to configure and execute manual associate and disassociate and automatic disassociate for two-level lots at MoveInLot, MoveLot, ReworkLot Trxns within core and adopted in Semi

- Extended to Semi TrackInLot and TrackOut Transactions
- Configurable at the spec with an override on process spec details
- Auto disassociate allows for parent termination or movement to future step

New transactions produced and adopted from core

- Container rename and container rename (multiple)
- Provide ability to rename a container or multiple containers

Cancel track-In enhancement

- Provides ability to cancel a lot that is at TrackIn
- Dynamic checkbox appears in WIP main advanced to cancel TrackIn when item processing and lot size is greater than one

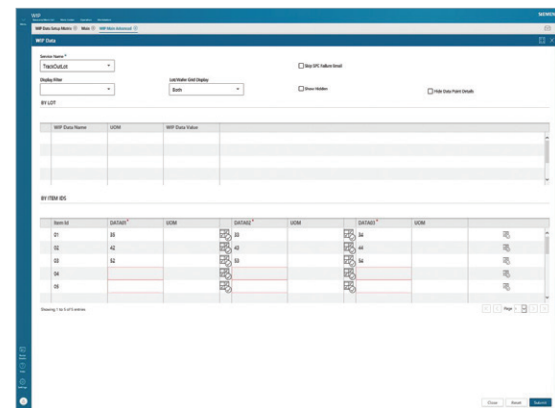
Temporary reject enhancement

- Method to temporarily reject Items or carriers
- Utilizes lot modify attribute with new attribute: QualityStatusReason
- Final reject to occur at future step with removal from lot

## Semi feature enhancements

WIP data popup page within WIP main advanced is now enhanced with additional responsive user interface (UI) functionality

- Data collection grid is now responsive in displaying more columns as the page is resized
- Hide data point details checkbox will hide non data entry columns exposing more data input columns

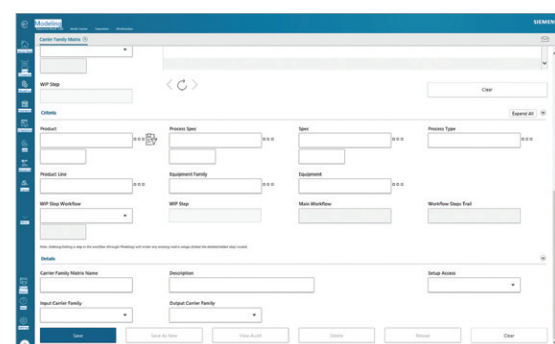


Tool plans can now be configured with a quantity of tools required

- These quantities will be verified during TrackIn
- Quantity is tool family based

A new carrier family matrix page integrated to WIP main advanced

- Enables carrier family to use configuration within a criteria matrix



New child container inquiry service for automation

- Returns all the child containers associated to the provided lot or carrier

Auto numbering rule extension

- Extends character configuration to allow for alphanumeric selections
- Provides greater life and bandwidth for auto numbering instances

#### Problem report fixes

- For the list of problem reports (PRs) addressed, please see the release notes

Siemens Digital Industries Software  
[siemens.com/software](https://www.siemens.com/software)

Americas +1 314 264 8499  
Europe +44 (0) 1276 413200  
Asia-Pacific +852 2230 3333