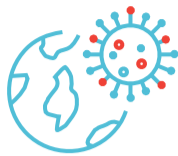


Operate your business with digital precision with Operational Excellence for Medical Devices

Unprecedented need for efficiency and agility, while maintaining quality and compliance



Increasing design complexity



Global Demographics and Disease



Competitive Cost Pressures



Evolving Regulatory Landscape

Phases of the pandemic cycle impact the demand for equipment.



Demand surge



Rapid response

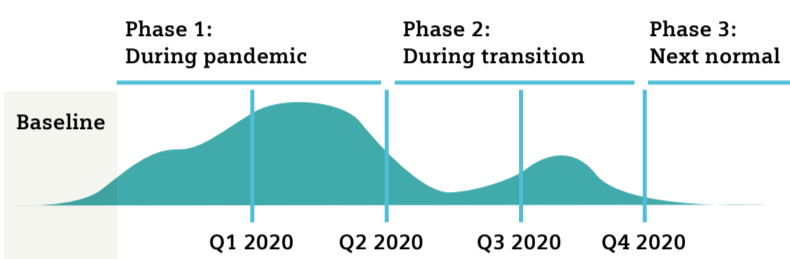


Unpredictability

Changes in US sales across the pandemic curve for medtech products¹

Illustrative

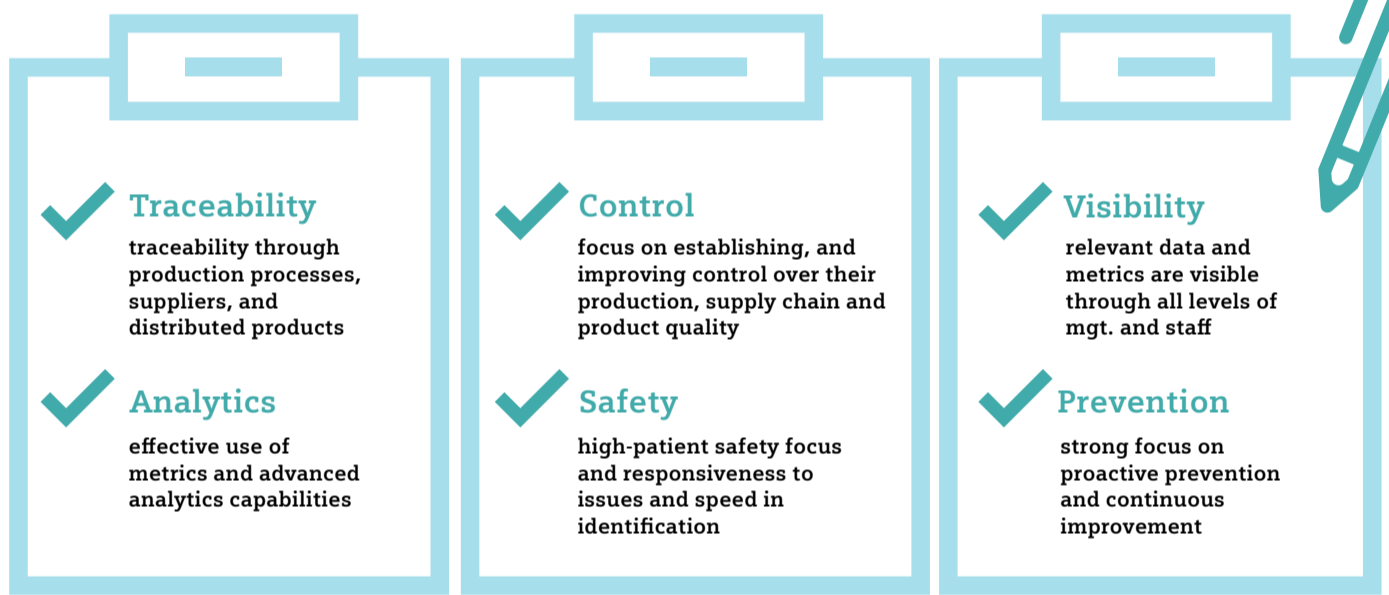
- >100% increase
- Up to 100% increase
- Up to 40% decline
- Minimal change
- >40% decline



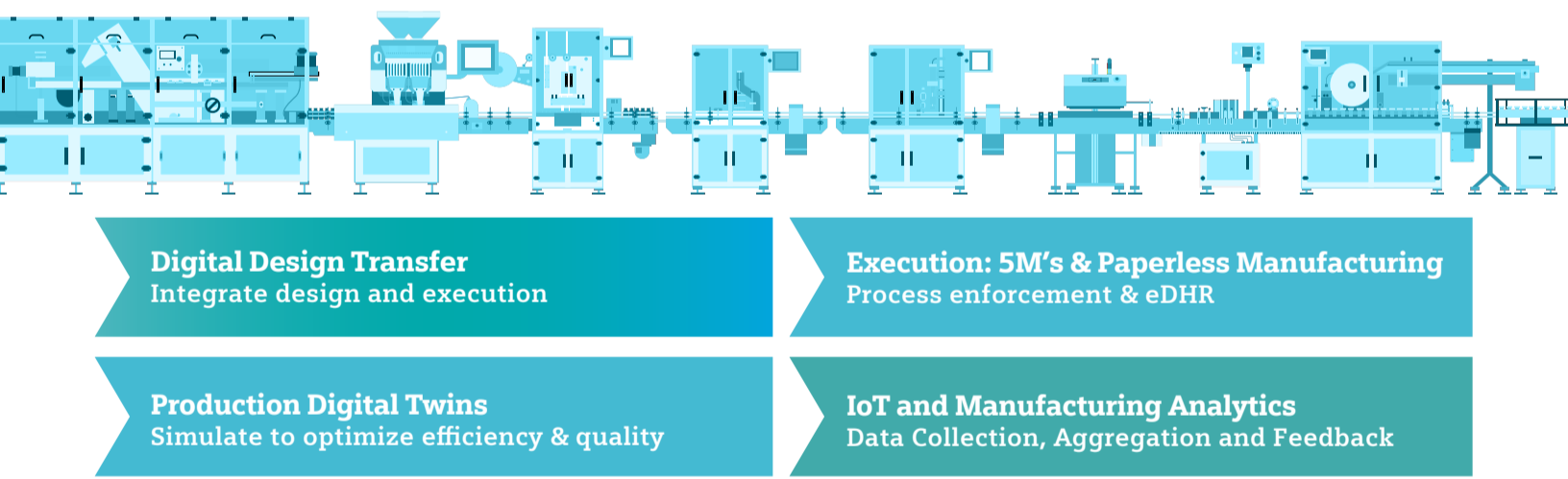
Expected vs. 2019 sales	Purchase Strategy	Phase				
		Baseline	Phase 1: During pandemic	Phase 2: During transition	Phase 3: Next normal	Phase 3: Next normal
	Accelerate—universal shortage		●	●	●	●
	Accelerate—select, localized shortage		●	●	●	●
	Maintain purchase		●	●	●	●
	Deprioritize purchase		●	●	●	●

¹ Baseline is 2019 orders per market reports, divided by tour. Source: McKinsey & Company

...Leads to exponential growth of manufacturing complexity, while expectation from regulators remain high

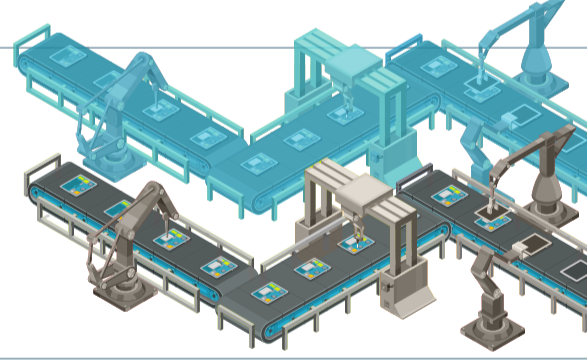


Realize high quality, efficient device production that's regulatory compliant and produces flawless electronic DHR's



Operate your business with digital precision....

A digital approach to manufacturing with re-use of production digital twins to simulate, schedule and execute production, enforcing routes, quality inspections, rework and yielding quality controlled devices, and a perfect eDHR



Enabling a Global Manufacturing Network



What clients are saying



"We are changing the Global Operations strategy, structure, culture and behaviors from 'cities unto themselves' to focus on the network as opposed to the plant."

Senior Vice President, Boston Scientific



"Camstar MES exceeded expectations and became the key software that helped us expand our line and expand our automation. The MES moves the manufacturing floor."

Juergen Lindner, General Manager, Micro Systems Engineering, Inc.

Implement tight integration between MES and ERP systems

Real-time visibility, control and speed throughout the manufacturing process

Stay agile by building configurable interlocks into manufacturing

For more information, visit:
siemens.com/forem