

# What's new in Opcenter Execution Electronics 8.5

## Improving functionality to manage small lot sizes and production changeovers

### Benefits

- Improve new product changeover capabilities
- Improve the management of upcoming manufacturing orders
- Enhance production preparation guidance
- Provide easier interface for standard functional testers at lower cost
- Consolidate defect labels for better visibility
- Improve interactive THT and box-build process

### Summary

Opcenter™ Execution Electronics software (OC EX EL) is a full digital manufacturing solution for the electronics industry that is built on an industry-leading manufacturing execution system (MES) platform for the medical device and semiconductor industries. Opcenter Execution Electronics is used throughout the electronics value chain, including for printed circuit board (PCB) and mechanical and box-build processes. Opcenter Execution Electronics is part of the Xcelerator™ portfolio, the comprehensive and integrated portfolio of software and services from Siemens Digital Industries Software.

The solution includes best-in-class manufacturing operations management (MOM) capabilities, such as manufacturing execution, quality management, materials management, planning and scheduling as well as manufacturing intelligence, facilitating direct connectivity to machines and production lines.

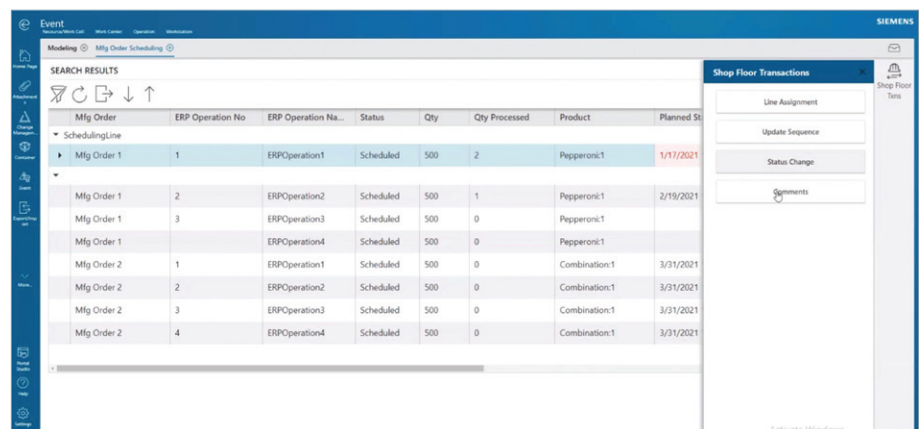
Electronics manufacturers are realizing faster new product introduction (NPI) and time-to-market, while improving their ability to compete in a rapidly changing, consumer-driven marketplace.

Opcenter Execution Electronics version 8.5 provides enhanced and new functionality to handle product changeovers, PCBs and box assemblies.

### Features

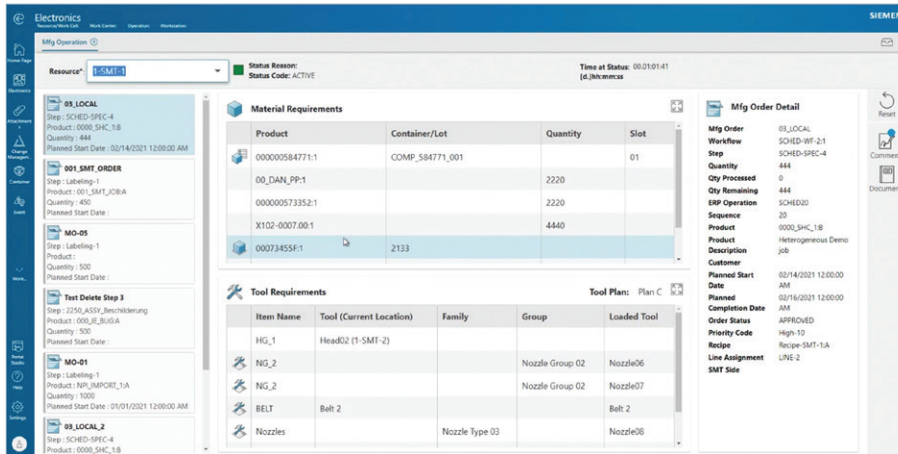
#### Manufacturing scheduling page enhancements

- Checks start date for each manufacturing order and highlights orders that were started after the planned start date



Mfg Order	ERP Operation No	ERP Operation Na...	Status	Qty	Qty Processed	Product	Planned St
Mfg Order 1	1	ERPOperation1	Scheduled	500	2	Pepperoni:1	1/17/2021
Mfg Order 1	2	ERPOperation2	Scheduled	500	1	Pepperoni:1	2/19/2021
Mfg Order 1	3	ERPOperation3	Scheduled	500	0	Pepperoni:1	
Mfg Order 1	4	ERPOperation4	Scheduled	500	0	Pepperoni:1	
Mfg Order 2	1	ERPOperation1	Scheduled	500	0	Combination:1	3/31/2021
Mfg Order 2	2	ERPOperation2	Scheduled	500	0	Combination:1	3/31/2021
Mfg Order 2	3	ERPOperation3	Scheduled	500	0	Combination:1	3/31/2021
Mfg Order 2	4	ERPOperation4	Scheduled	500	0	Combination:1	3/31/2021

# What's new in Opcenter Execution Electronics 8.5



- The mapping also allows identifying specific defect labels that should be ignored
- Defect mapping can be configured at the factory and resource level

## Production client and BOM enhancements for work instructions

- Multiple images can be associated to a product. Those are shown by the document control of shop floor pages
- In addition, a specific image may be associated to a material list item
- Production client detects and displays the material list item image

- Highlights manufacturing orders that have not completed production before the planned completion date
- Filters by manufacturing order priority
- Adds ability to record comments

## New manufacturing operation page

- Provides a view of all manufacturing orders that are planned at a specific resource
- Integrated with scheduling data that shows the planned sequence of manufacturing order production
- Displays all material requirements for the manufacturing order at the resource and production step
- Provides information about all materials and tools currently loaded at the resource
- Displays all tool requirements for the resource based on the tool plan defined by the manufacturing tool plan matrix
- Allows recording comments against the resource and manufacturing order job step
- Includes all required work instructions to guide the preparation for the next manufacturing order

## Opcenter Connect MOM tester adapter functionality

- Provides new functionality to the OC EX EL file adapter to support collecting defect data from automated test equipment
- Adapter supports two formats
  - UGSTesterCom XML format
  - ODB++™ language manufacturing format (OML)

## Defect reason mapping management

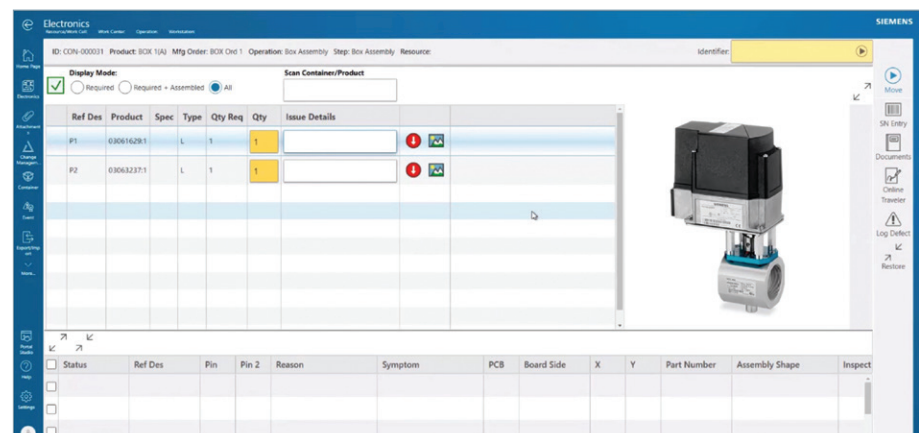
- New modeling object allows defining the relationship between defect labels reported by automated test equipment and the defect reasons configured in Opcenter

## Automated setup /feeder plan integration

- Generate feeder plans based on a manufacturing order material list or a bill-of-materials (BOM) when items are assigned to a route step/spec
- Now component setup pages display a feeder pan requirements guide to the operator to properly set up required materials

## Bill-of-process override enhancements

- Configure process timer and tool plan matrix overrides



### Production client WIP message and data collections

- Support work-in-process (WIP) message and data collection display for transactions

### Production client manual assembly enhancement

- The associated image for a selected component is displayed using a slide out

### Update additional core pages to support serial numbers

- Component remove page updated to allow serial number scans
- Component replace page updated to allow serial number scans

### Online traveler page enhancements

- Displays defect data for a scanned container. Shows defects for all child containers
- Updates child containers display to show both currently associated container as well as containers that were disassociated

### New Opcenter Ex Medical Device and Diagnostics 8.5 enhancements that are relevant to Opcenter Execution Electronics

- Electronic Kanban - phase 3 capabilities
- New In-line statistical process control (SPC) module
- Security enhancements
- Technology improvements

Siemens Digital Industries Software  
[siemens.com/software](https://www.siemens.com/software)

Americas +1 314 264 8499  
Europe +44 (0) 1276 413200  
Asia-Pacific +852 2230 3333

© 2021 Siemens. A list of relevant Siemens trademarks can be found [here](#). Other trademarks belong to their respective owners.