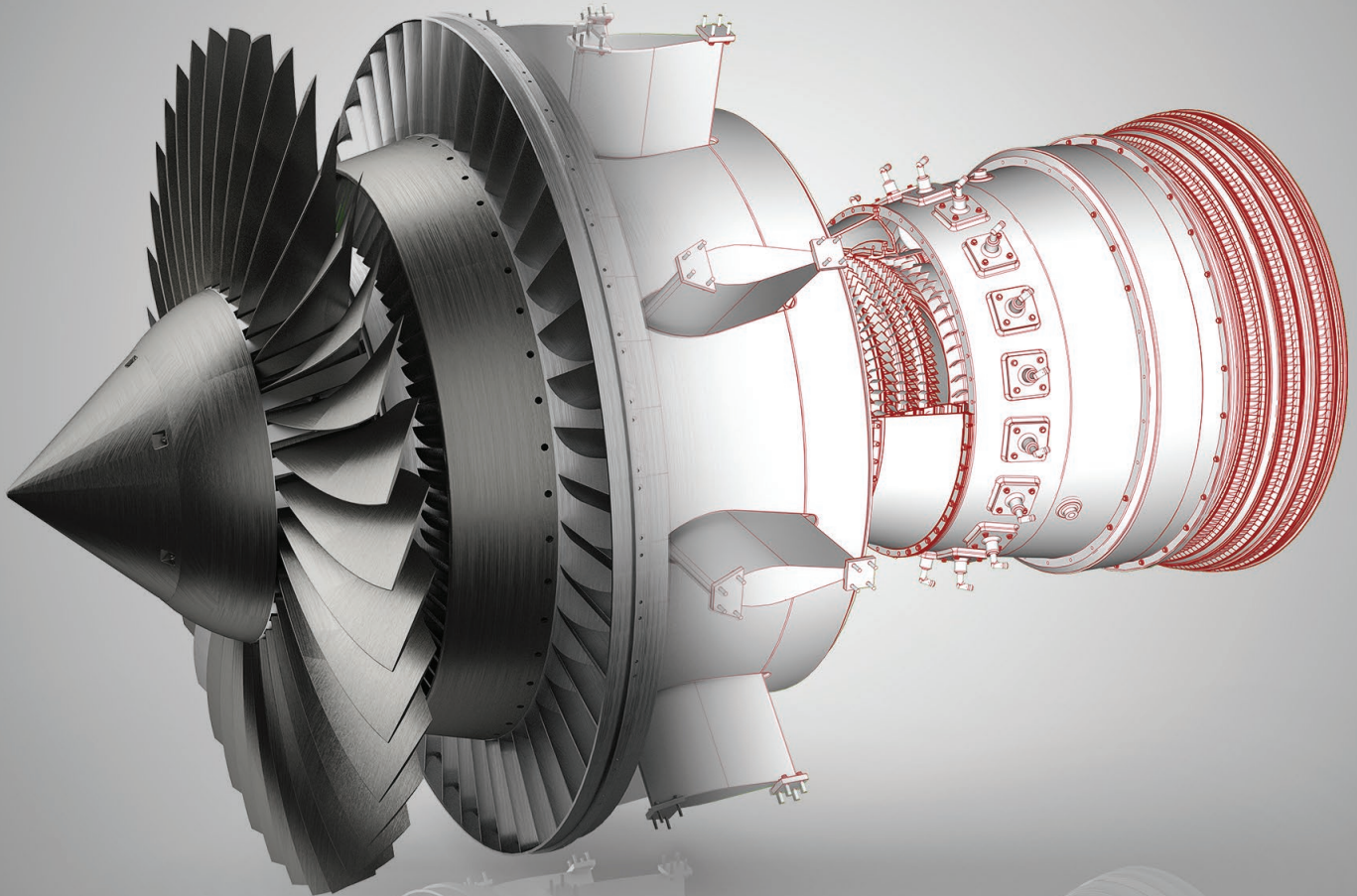


**SIEMENS**

*Ingenuity for life*



# JT plus PDF

User guide

[www.siemens.com/plm](http://www.siemens.com/plm)

# Contents

What is JT plus PDF?	3
What can you do with JT plus PDF?	3
How JT plus PDF works	4
Selecting and setting the PMI and Model View JTCmd strings	5

# What is JT plus PDF?

JT plus PDF is a simple approach to creating a 3D Technical Data Package without creating any new derived 3D data. The JT file is simply attached to a standard PDF file and then specific content in the JT file is linked to the PDF through an easily understood URI protocol.

# What can you do with JT plus PDF?

JT plus PDF provides authors of electronic documents, such as process documents, shop floor instructions, quotes and supplier packages with an innovative way to combine and deliver content. JT plus PDF also enables shop floor paperless drawing workflows by delivering fully annotated 3D JT models and manufacturing instructions in a single PDF package.

For JT adopters, combining JT plus PDF provides a zero translation solution. JT files are attached to PDF files without any modifications to the original 3D JT data, so no additional

validation of the existing 3D JT data is required. Any workflow that requires both text and 3D content delivered in a PDF container is a good candidate for JT plus PDF. JT provides the 3D geometry, model views, PMI properties and attributes needed for a comprehensive paperless drawing environment

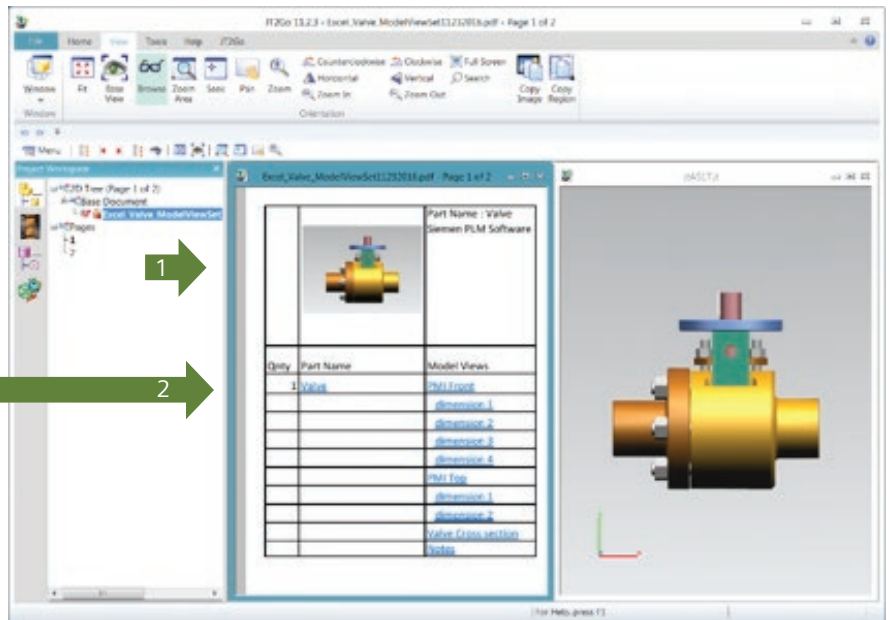
By using JT plus PDF a low cost Technical Data Package solution and a paperless drawing environment is achieved. JT plus PDF provides a solution for Model Based Design data sharing in a Model Based Enterprise.

# How JT plus PDF works

JT plus PDF uses JT2Go and a simple Hyperlink string protocol to drive the 3D JT model displayed in JT2Go from a PDF document. At the heart of JT plus PDF is a listening capability built into JT2Go. JT2Go “listens” for the user selection of a URL string and then reacts by changing the display state of the associated JT file.

1. Load .pdf with JT2Go into the 2D viewer
2. Select a URI from the .pdf

Qty	Part Name	Model Views
1	Valve	PMI Front

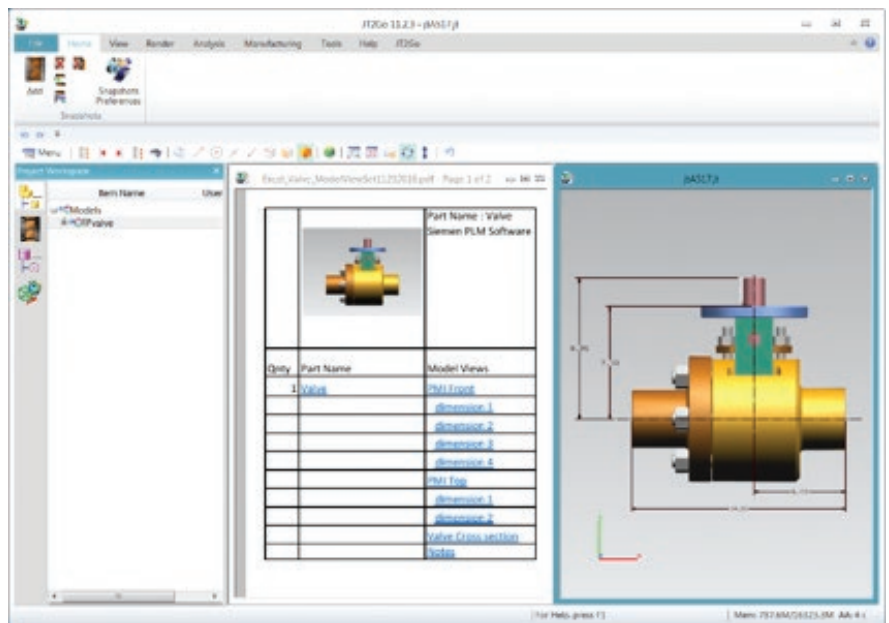


3. JT2Go loads the selected modelview and activates the 3D viewer

This is achieved through a simple string protocol for URL's.

**“JTCmd://cmd type/TypeID|Name|Part Name/CADID”**

Standard PDF files and Office documents authored with these URL strings as Hyperlinks are able to manipulate the selection and display of JT Geometry, Model Views and PMI in JT2Go. Teamcenter Visualization users can also create links to snapshot views in session files.



# Selecting and setting the PMI and Model View JTCmd strings

JT2Go makes it easy to manually author documents that contain links to JT files. To get started, open a JT file that has model views. Next, open a document authoring tool like Word or Excel. With both the authoring tool and JT2Go active, select a model view in JT2Go. JT2Go automatically stores a base 64 encoded string into the Windows copy buffer. A graphic image for model views and snap shots is also stored as a bitmap in the buffer.

1. Select a PMI entity in JT2Go and a string with the JTCmd for PMI entity is automatically loaded into the copy buffer

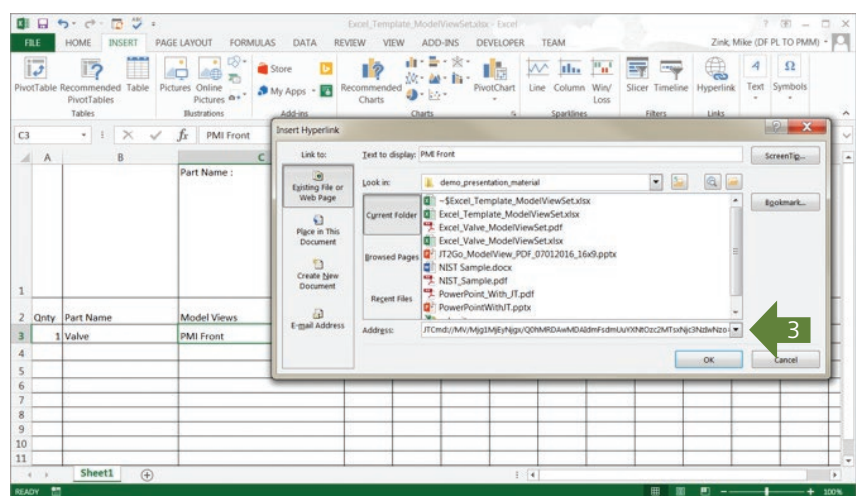
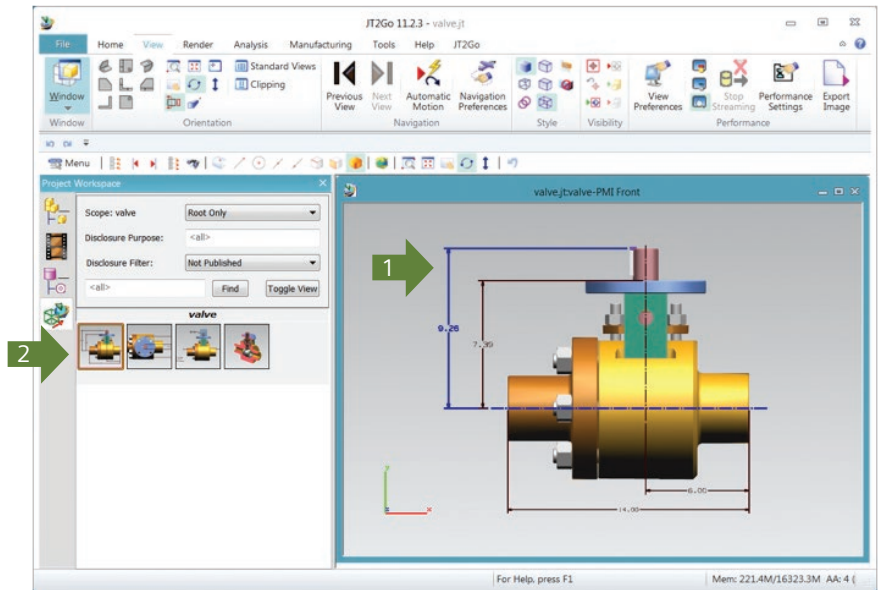
```
JTCmd://PMI/MzAxOTg5ODg5QQ0hMRD
DAwMDAIdmFsdmUuYXNtOzc2MTsxNjc
3NzlwNzo=/
```

2. Select a Model View in JT2Go and a string with the JTCmd for Model View is automatically loaded into the copy buffer

```
JTCmd://MV/Mjg1MjE5Njg5Q0hMRD
AwMDAIdmFsdmUuYXNtOzc2MT
sxNjc3NzlwNzo=/
```

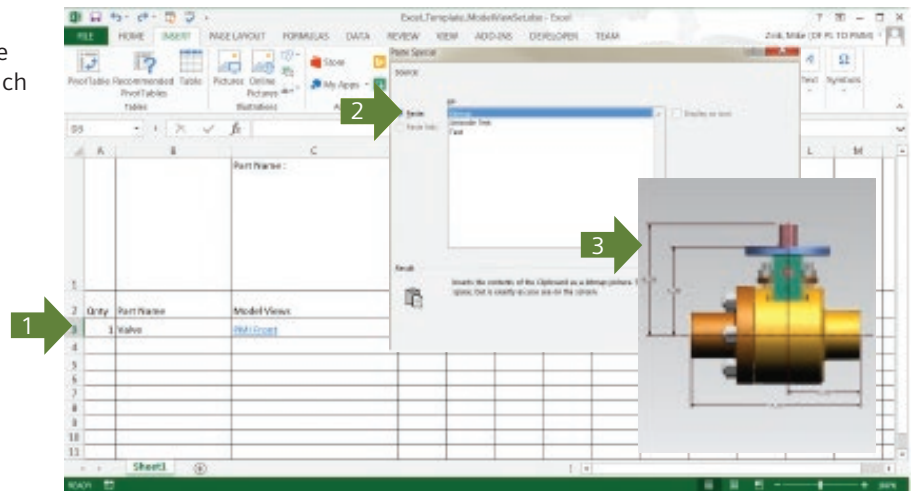
These strings must be stored in the document as HyperLinks. An example using Excel is shown at right.

3. Paste the JTCmd string from the copy buffer into the HyperLink address.



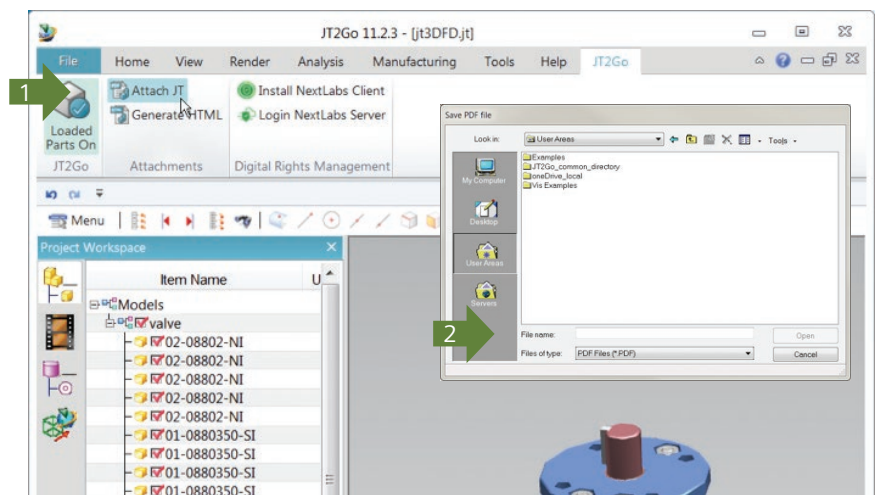
Graphic images can also be pasted from the buffer into the authored document using the Paste Special feature in Office documents such as Word or Excel.

1. Right mouse and select Paste Special
2. Choose Bitmap
3. A model view bitmap is pasted in the document



When the document is complete it can be saved as a .pdf from the authoring tool. Using JT2Go users can attach the JT file to the .pdf document. The example below shows how to attach a JT to a .pdf using JT2Go.

1. Choose Attach
2. Enter a name or select a .pdf to attach the active JT file to



The following types of links can be created interactively with JT2Go 11.2.3

- MV = model view
- PMI = PMI entity
- SEL = Part selection

With these simple steps a .pdf file with JT as an attachment and Hyperlinks to PMI information can be created. JT2Go includes sample .pdf files in the example directory that demonstrate JT plus PDF.

### **About Siemens PLM Software**

Siemens PLM Software, a business unit of the Siemens Digital Factory Division, is a leading global provider of software solutions to drive the digital transformation of industry, creating new opportunities for manufacturers to realize innovation. With headquarters in Plano, Texas, and over 140,000 customers worldwide, Siemens PLM Software works with companies of all sizes to transform the way ideas come to life, the way products are realized, and the way products and assets in operation are used and understood. For more information on Siemens PLM Software products and services, visit [www.siemens.com/plm](http://www.siemens.com/plm).

Headquarters: +1 972 987 3000  
Americas: +1 314 264 8499  
Europe: +44 (0) 1276 413200  
Asia-Pacific: +852 2230 3308

© 2017 Siemens Product Lifecycle Management Software Inc. Siemens and the Siemens logo are registered trademarks of Siemens AG. D-Cubed, Femap, Fibersim, Geolus, GO PLM, I-deas, JT, NX, Parasolid, Solid Edge, Syncrofit, Teamcenter and Tecnomatix are trademarks or registered trademarks of Siemens Product Lifecycle Management Software Inc. or its subsidiaries in the United States and in other countries. All other logos, trademarks, registered trademarks or service marks belong to their respective holders.

61338-A3 8/17 B