

# UniCam Fx – NPI solutions for electronics

## Automated programming and document generation for PCB assembly

### Benefits

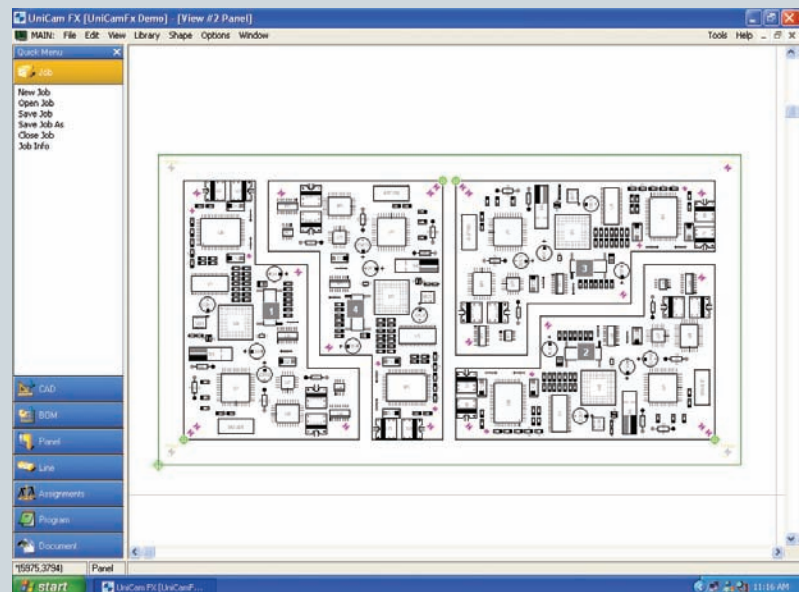
- Fast and accurate CAD/BOM recovery including part shapes and net traces
- Process assignment across the PCB assembly line in minutes rather than hours
- Machine programs generated in minutes including support of mixed lines
- Full sets of documentation including hand insert instructions are automatically generated within user-defined templates

### Features

- Native CAD imported from 65 different platforms including nets and traces
- Automated assignment between different processes across the PCB assembly line
- Machine program generation for 100 different platforms including the most commonly used SMT, THT and dispenser equipment
- Automated generation of manufacturing documents and hand insert instructions within user configurable templates
- 2D viewing capabilities for board and circuit query including first article inspection and electronic publishing of documents and work instructions

### Summary

UniCam Fx software from Siemens PLM Software is a true 32-bit upgrade to the electronics industry's leading solutions for PCB assembly. Users will enjoy the same benefits of UniCam in an updated working environment enabling greater ease of use with additional functionality. For new users, UniCam Fx provides a solid entry solution for standardizing PCB assembly process planning, machine programming and generating process documentation and hand insert instructions.



Whether you are a veteran UniCam user, or are seeking a solid PCB assembly solution for machine programming and document generation, UniCam Fx is an ideal solution that addresses fundamental new product introduction (NPI) requirements.

Longtime UniCam users will enjoy a significant upgrade. UniCam Fx is a 32-bit version which offers flexibility in file management including support of long file names and can be installed on Windows 2000, 2003 and XP.

# TECNOMATIX

[www.siemens.com/tecnomatix](http://www.siemens.com/tecnomatix)

# SIEMENS

## UniCam Fx – NPI solutions for electronics

Additional features include enhanced user friendliness with better navigation via a configurable quick user menu, standardized library editing for faster job processing and additional interfaces for both CAD import and machine output.

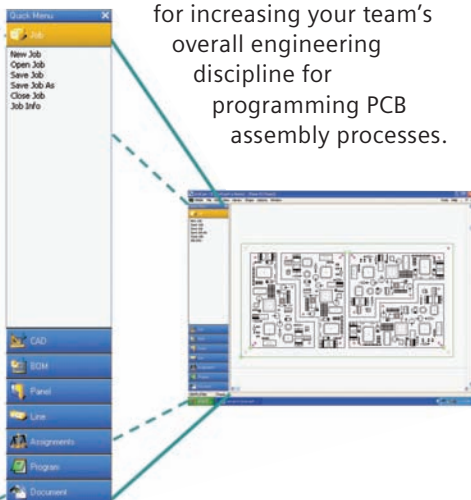
New users will enjoy the benefits of the most commonly used NPI tool for PCB assembly in an updated interface. With a ten-year track record and more than 1,000 global users, UniCam Fx is a proven solution for your PCB assembly programming and documentation needs.

### A true 32-bit solution

UniCam Fx now supports long file names and may be installed on Windows 2000 and XP. As a 32-bit solution, processing speed is considerably faster allowing users to better cope with demanding environments.

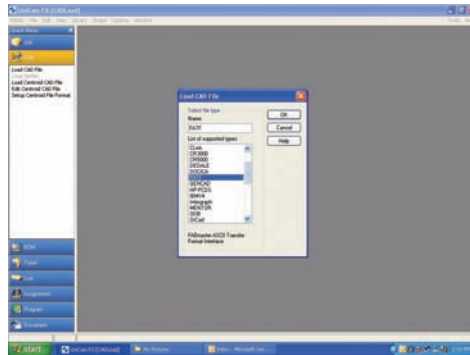
### Quick menu

A quick menu has been integrated into the UniCam Fx user environment to allow faster navigation and better solution interfacing. The quick menu can be configurable and acts as a process workflow for increasing your team's overall engineering discipline for programming PCB assembly processes.



### CAD import

Tecnomatix® software provides the most complete and current CAD readers available for electronics manufacturers. Users can capture full CAD including nets and traces from over 65 different platforms. Regular updates ensure that users can import CAD files from the most current versions in the marketplace.

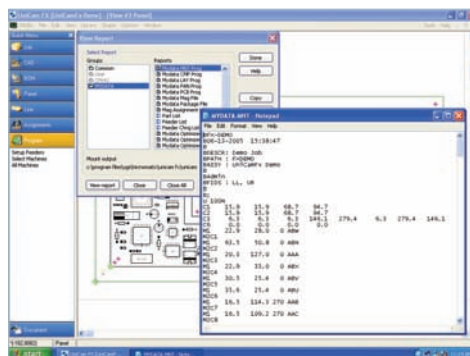


### Library editor

A standard library editor is available for editing parts, shapes and machine libraries. This standardization enables users to speed up their overall processing by providing a common editing interface.

### Factory definition

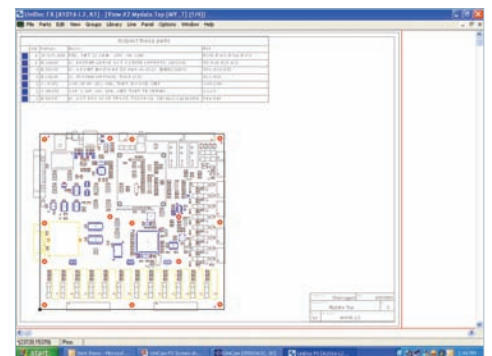
With more than one hundred SMT, THT, screen print and glue machines supported, PCB assembly process models may be built and retained as resource libraries. Furthermore, hand insert stations can be



defined including specific station configurations. With the factory defined, UniCam Fx is able to assign process components across the selected production line.

### Documentation and work instructions

UniCam Fx automatically generates full sets of documents including setup lists, assignment sheets and hand insert instructions. Documents are generated in user configurable templates. Drawing files may be imported into the instructions. Any engineering changes will update the entire set of documents.



### Viewing and query

Viewing capabilities are available with deployable standalone view stations that may be installed on a network or at distributed locations. Board layout and circuits may be viewed and queried speeding up collaboration between different process engineering teams within a single site or across an enterprise. View stations may also be used for electronic publication of documents and work instructions enabling faster delivery to operators and creating a paper-free environment.

### **Tecnomatix for the electronics industry**

Electronics manufacturers must bring cost-effective products to market faster than ever while meeting a variety of challenges including the introduction of a large number of new products in record time; manufacturing a growing mix of complex products; meeting customer and regulatory demands like traceability and lead-free manufacturing; and introducing new technologies, components, software, equipment or processes.

Beyond these day-to-day manufacturing challenges, global electronics manufacturers face the challenge of acquiring new facilities; selecting the right equipment; balancing the workload between factories; managing inventory and quality on a global scale; and managing the outsourcing business process.

Siemens' Tecnomatix for Electronics solutions address these critical issues by providing the most commonly used manufacturing process management solution for designing, managing and integrating the NPI process, production execution on the shop floor and the outsourcing business process at the single plant, corporation and extended enterprise levels.

You can use this complete, end-to-end manufacturing solution to design, optimize and execute board and box-level production processes. Tecnomatix helps you introduce new products faster by enabling you to more easily program and optimize the widest variety of assembly machines and test equipment in low- and high-mix scenarios, logging defects in the

repair process and managing all aspects of manufacturing execution, from material management to machine monitoring to quality management to full product and process traceability.

### **Tecnomatix solutions for digital manufacturing**

The Tecnomatix suite is an end-to-end collaborative solution that enables the planning, design, analysis, optimization and operation of manufacturing processes – letting users create and share manufacturing information across the enterprise and throughout the supply chain. Tecnomatix solutions help manufacturers implement effective digital manufacturing strategies – from sharing product and process designs to joint process planning and engineering by teams in distributed locations – helping planners to make decisions such as where, how and with what resources to manufacture products.

Leading manufacturers around the world are adopting Tecnomatix solutions to expand revenue potential by accelerating product introductions, reducing costs, shortening time-to-volume and optimizing production execution.

For more information about Siemens PLM Software solutions, visit [www.siemens.com/plm](http://www.siemens.com/plm).

Contact  
Siemens PLM Software  
Americas 800 498 5351  
Europe 44 (0) 1276 702000  
Asia-Pacific 852 2230 3333

[www.siemens.com/tecnomatix](http://www.siemens.com/tecnomatix)

© 2010 Siemens Product Lifecycle Management Software Inc. All rights reserved. Siemens and the Siemens logo are registered trademarks of Siemens AG. D-Cubed, Femap, Geolus, GO PLM, I-deas, Insight, JT, NX, Parasolid, Solid Edge, Teamcenter, Tecnomatix and Velocity Series are trademarks or registered trademarks of Siemens Product Lifecycle Management Software Inc. or its subsidiaries in the United States and in other countries. All other logos, trademarks, registered trademarks or service marks used herein are the property of their respective holders.  
X3 5528 12/10 B