

## Teamcenter Express Version 3

Improved management of everyday tasks and processes through expanded integration with the user's desktop

### fact sheet

Siemens PLM Software

[www.siemens.com/plm/teamcenterexpress](http://www.siemens.com/plm/teamcenterexpress)

#### ► Summary

Teamcenter® Express Version 3 software delivers a preconfigured yet extensible collaborative product data management (cPDM) solution that addresses the needs of small- and mid-size manufacturing organizations. Teamcenter Express Version 3 builds on its focus of providing a single source of data for design-through-manufacturing by adding expanded Microsoft Office integration, improved web view and markup capabilities, an attribute mapping tool that facilitates the capture of existing documents and expanded support for printing and plotting resulting in improved integration with the user's desktop.

Easily capture and manage Microsoft Office documents

Manage your workflow tasks directly from Microsoft Outlook

More users and more departments can have easy access to the cPDM database

Improved import of documents and ongoing synchronization of their properties

Intelligent part number assignment achieved without the need for coding

#### Features

Teamcenter Toolbar and Task Pane for easy integration with Microsoft Word and Excel

View and manage Teamcenter Express workflow tasks and associated data directly from within Microsoft Outlook

Comprehensive view, analysis and markup of 2D and 3D document formats from the Teamcenter Express Web client

Attribute mapping tool to read properties data when importing technical documents

Smart Codes for generating intelligent part numbers for new items

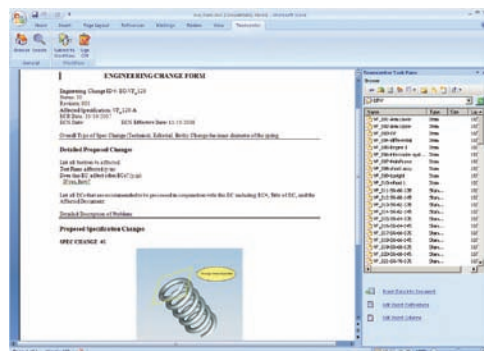
Siemens PLM Software packs Teamcenter Express Version 3 with enhanced capabilities for creating, sharing and managing data for design through manufacturing. Version 3 includes major enhancements that further establish Teamcenter Express as the leader in providing a preconfigured cPDM environment that focuses on managing everyday tasks and processes for SMBs.

*Microsoft Office 2007 Integration.* Enhanced Microsoft Office integration enables users who create Word and Excel documents and those who use Microsoft Outlook to directly access the Teamcenter Express cPDM database and to easily capture and manage files from their desktop.

*Microsoft Word and Excel Integration* includes support for everyday document management tasks such as creating new Word and Excel documents from standard templates, assigning document numbers, adding new documents to the Teamcenter Express database and associating them with existing data; and checking out and editing existing documents.

Users can copy data from the Teamcenter Express database directly into the documents they are creating. For example users can insert Microsoft Office documents, JT™ lightweight representations of 3D CAD models and attribute information for database items into Word and Excel documents.

Users can also create new Teamcenter Express workflow processes and associate the active Microsoft Office document with the new process and signoff on workflow tasks that are associated with the active document.



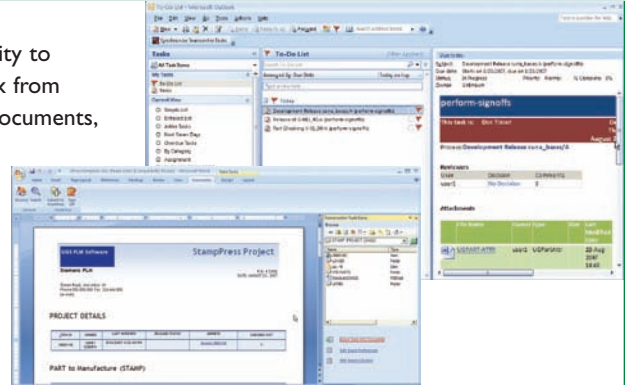
**Certifications**

New Microsoft platform certifications help deliver low total cost of ownership for SMBs through expanded support on Vista and Internet Explorer 7 for the Teamcenter Express Rich and Web clients respectively as well as certification on Microsoft Small Business Server.

**Teamcenter platform**

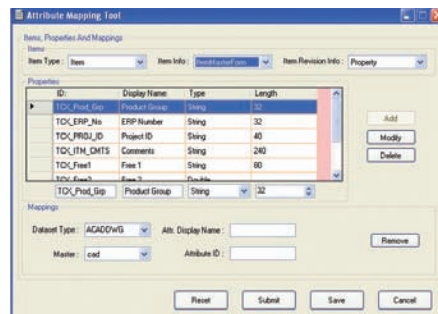
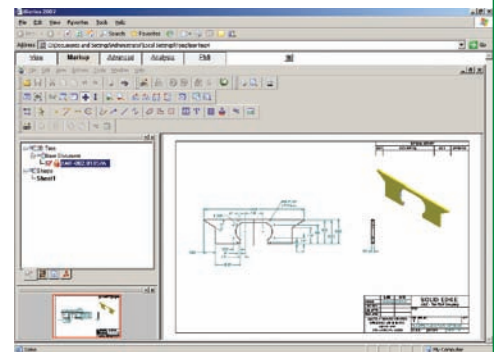
Teamcenter Express Version 3 is a configuration of Teamcenter Engineering 2007. Teamcenter Express will adopt the Teamcenter unified architecture in 2008. New and existing Teamcenter Express customers who purchase Teamcenter Express Version 3 will be able to upgrade to Teamcenter Express Version 4, based on the Teamcenter 2007 (unified architecture) platform, using the standard installation and upgrade utilities provided with Teamcenter Express with no loss of data.

*Microsoft Outlook Integration* includes the ability to browse the users' Teamcenter Express inbox from Outlook, view workflow tasks and related documents, select a signoff team, perform signoffs and save emails to Teamcenter Express. Users can also copy data from the Teamcenter Express database directly into an Outlook email.



From Teamcenter Express, users can launch Microsoft Outlook by clicking on an Outlook dataset.

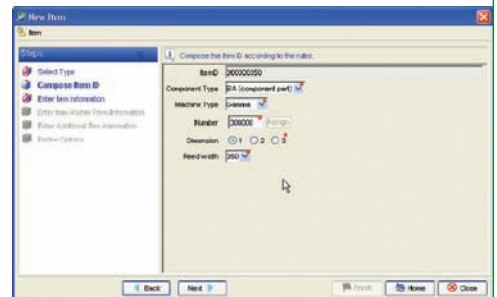
*Enhanced Web Client Visualization* including support for a wider range of document types, extended analysis and markup functionality and improved user interface consistency between the Web Client and the Rich Client. This delivers easy-to-deploy access to Teamcenter Express to a wider range of users such as shop floor team leaders and machine operators who need to perform tasks like searching for parts, taking measurements from 3D CAD parts, printing drawings and adding markups to communicate issues found in manufacturing. Automatic installation of the view and markup capabilities is provided through the Web Client.



*New attribute mapping tool* enables mappings to be set up between a document's properties and Teamcenter Express attributes. This facilitates the process of loading legacy data into Teamcenter Express from the user's desktop by providing the capability to load property data in addition to the document file itself. The tool also has more generic capabilities that facilitate changes to the data model including adding new attributes, deleting unwanted attributes and modifying existing attributes. Changes to attributes are reflected in the associated forms.

*Printing and plotting* of documents and drawings from the user's desktop is enhanced by the addition of a server based print/plot capability and the ability to add watermarks. Teamcenter Express users benefit from offloading compute intensive print/plot operations to a server and more comprehensive support for the everyday tasks around producing hardcopy documentation.

*New Smart Codes* capability enables users to assign intelligent part numbers to new items by selecting from multiple lists-of-values and adding a sequence number to compile structured, unique part numbers. This is configured by the system administrator and enables company standards for part numbering to be enforced across the organization.



**Contact**  
**Siemens PLM Software**  
**Americas 800 807 2200**  
**Europe 44 (0) 1202 243455**  
**Asia-Pacific 852 2230 3308**  
**www.siemens.com/plm**

