

JT OPEN

Visualizing the JT Future

Chuck Grindstaff, EVP Products and CTO

SIEMENS

Siemens PLM Software

SEPTEMBER 12 -14

2010 International Conference

VISUALIZING THE FUTURE

Hosted by

SIEMENS

Overview

Open Enterprise Solutions

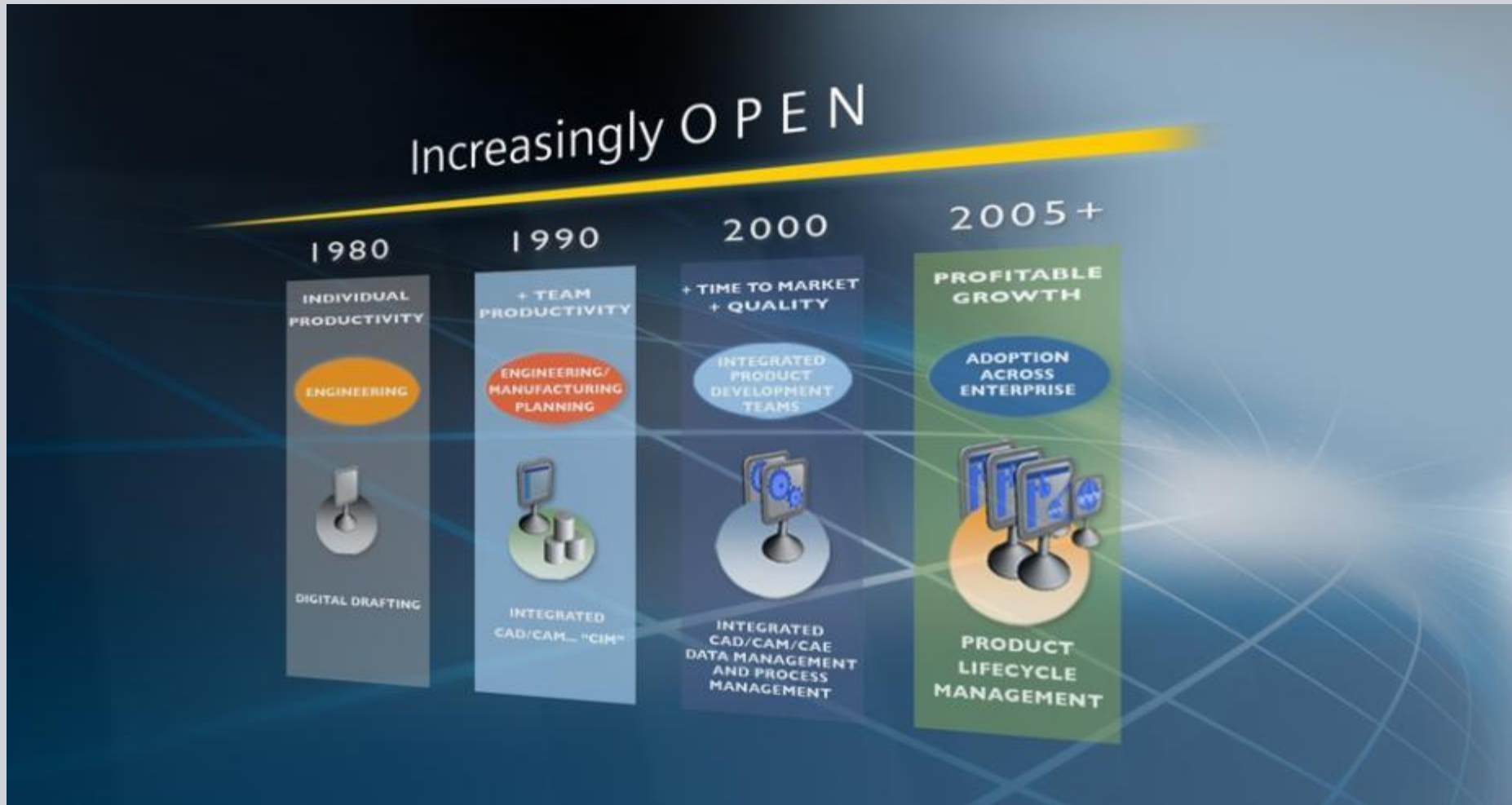
JT – Enabling Open Solutions

Siemens PLM and JT

Open Enterprise Solutions




Enterprise Requirement for Open PLM Solutions



Global Demand For Openness

- Best-in-class solutions for specific business processes, including commercial, legacy and proprietary systems
- Share and re-use knowledge and intellectual capital across their business enterprise
- Innovate with common processes in extended communities due to joint ventures, outsourcing, mergers and acquisitions
- Deploy technology on a shared architecture and common infrastructure

The Importance of an Open PLM Platform

	OPEN	PROPRIETARY
Customer Pros	<ul style="list-style-type: none"> ▪ Best in class solutions ▪ Easily integrated ▪ Promotes standards ▪ Personalization ▪ Competitive cost 	<ul style="list-style-type: none"> ▪ Single vendor to provide complete solution
Vendor Pros	<ul style="list-style-type: none"> ▪ High adoption ▪ Requires richness ▪ Achieves robustness 	<ul style="list-style-type: none"> ▪ Captive audience ▪ OEM and supply chain ▪ Compliance required
Customer Cons	<ul style="list-style-type: none"> ▪ Selection of a standard architecture a must 	<ul style="list-style-type: none"> ▪ Expensive to customize ▪ At the mercy of the vendor
Vendor Cons	<ul style="list-style-type: none"> ▪ Each solution needs to compete under its own merits 	<ul style="list-style-type: none"> ▪ Inability to provide complete PLM ▪ Limited market responsiveness

Requirements for Open Solutions

OPEN DATA MODEL

Enabling interoperability

OPEN BUSINESS MODEL

Leveraging standard, open components

OPEN ARCHITECTURE

Enabling integration

OPEN APPLICATIONS

Automation/customization

OPEN COMMUNITIES FOR INNOVATION

Promoting partner/customer communities



JT – Enabling Open Solutions



JT Vision Statement

To define the global standard for lightweight 3D data that drives consistency and quality throughout industry



JT is the common language of PLM

JT deployed throughout business processes

Specialist Validation

Styling
Reviews



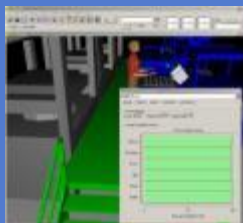
Immersive
Design Review



Virtual Factory



Ergonomic
Simulation



Core Engineering

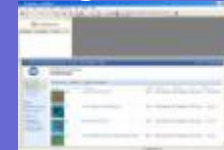
Assembly Validation



PMI



Formal
Design Review



Virtual Functional
Build



Quality Validation



Spatial Digital
Validation (RDV)



CAE Results



Ubiquitous Viewing

Technical
Publishing



Adhoc
Design Reviews



2D/3D
View & Markup



PLM Workflows



Long Term
Data Retention



Supplier
Viewing



JT deployed throughout product development organizations

- Manufacturing processes: Discrete Mfg, Process manufacturing, Architectural, Building and Capital Projects
- Industries: Shipbuilding, Automotive, Aerospace, High-tech electronics, CPG

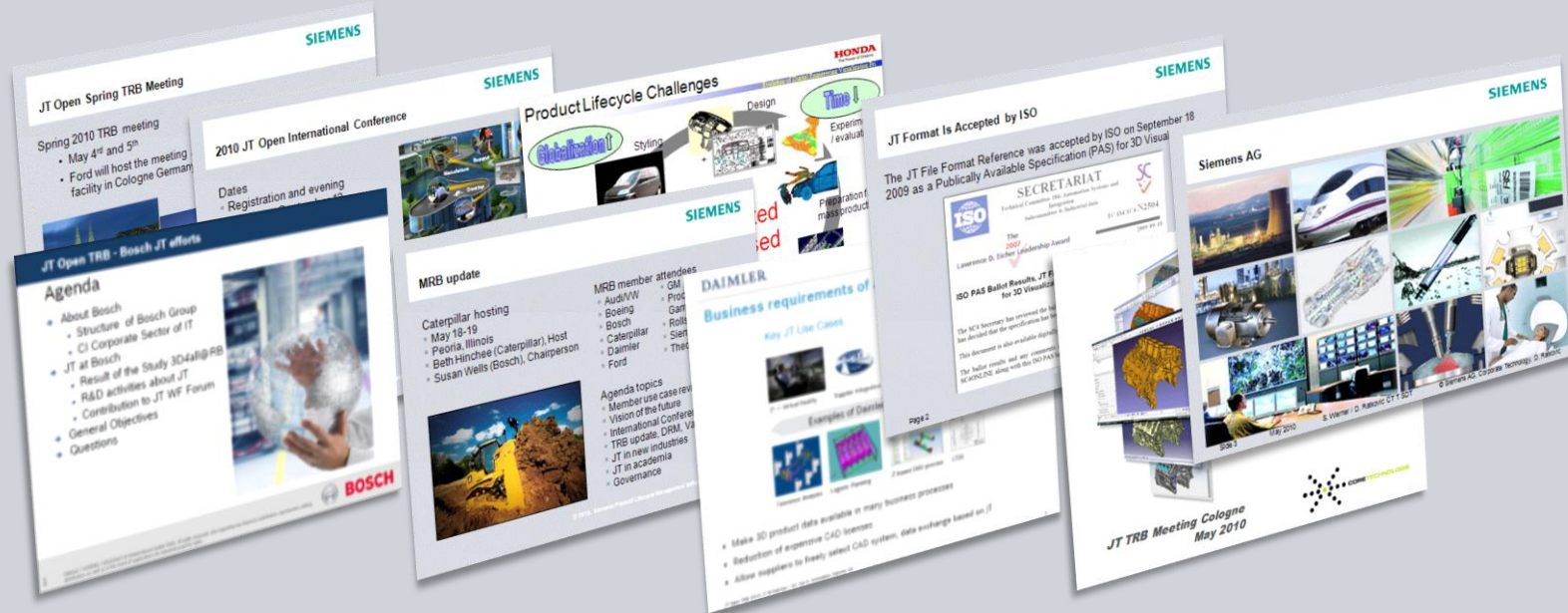


Siemens PLM Software and JT



Continuing to Make JT the Standard - JT Open Program

A unique community of software users and independent software vendors committed to the widespread adoption of a single, open and preferred 3D visualization platform based on JT technology.



Continuing to Make JT Available



JT Toolkit for JT Open Members

File format is published by Siemens

- Version 9.5 now available
-

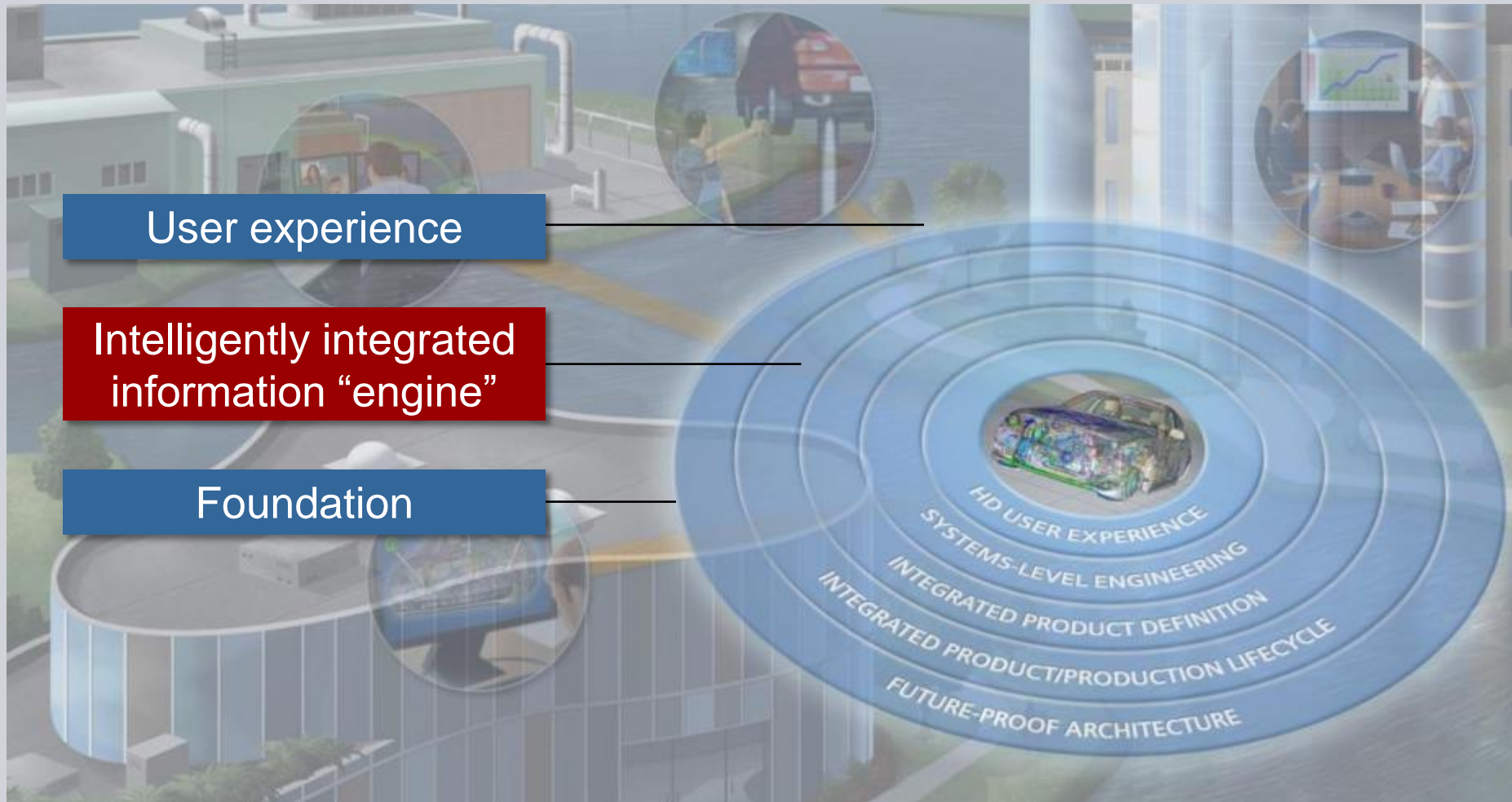
File format is a ISO Publically Available Specification

- ISO PAS 14306
-

Initiated effort to have JT become ISO specification

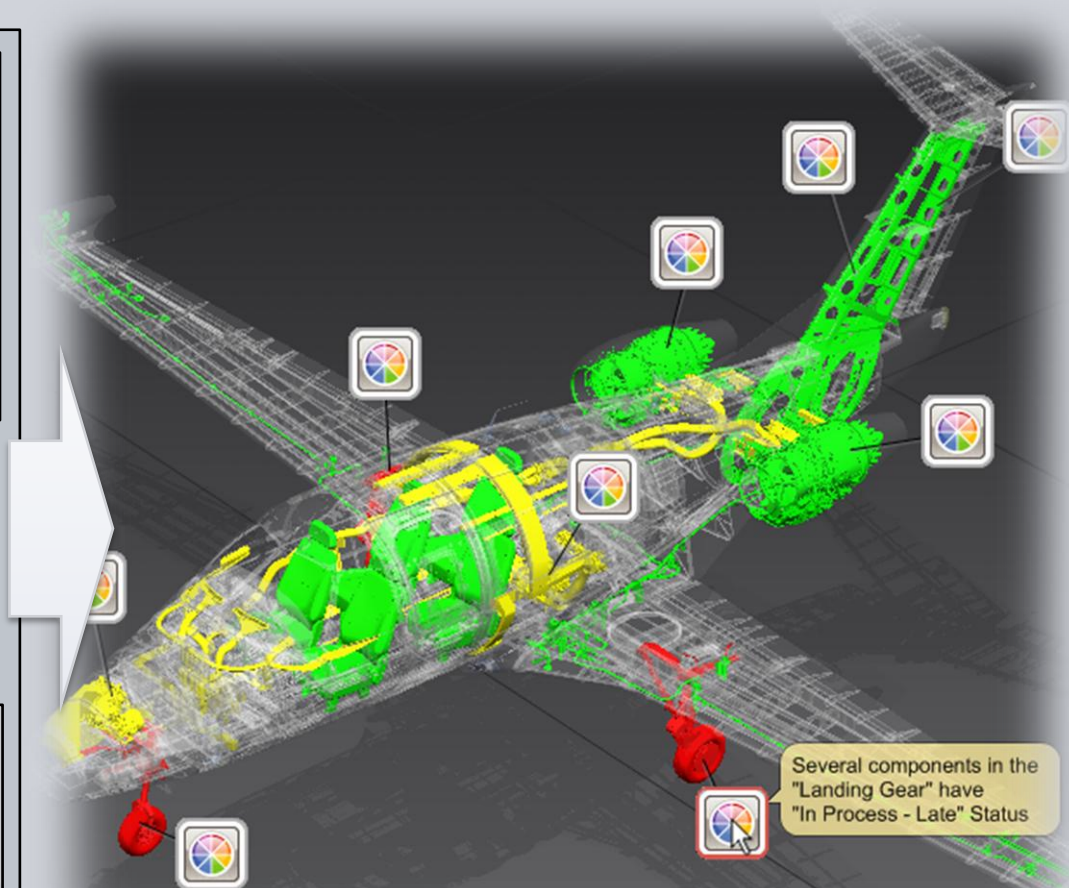
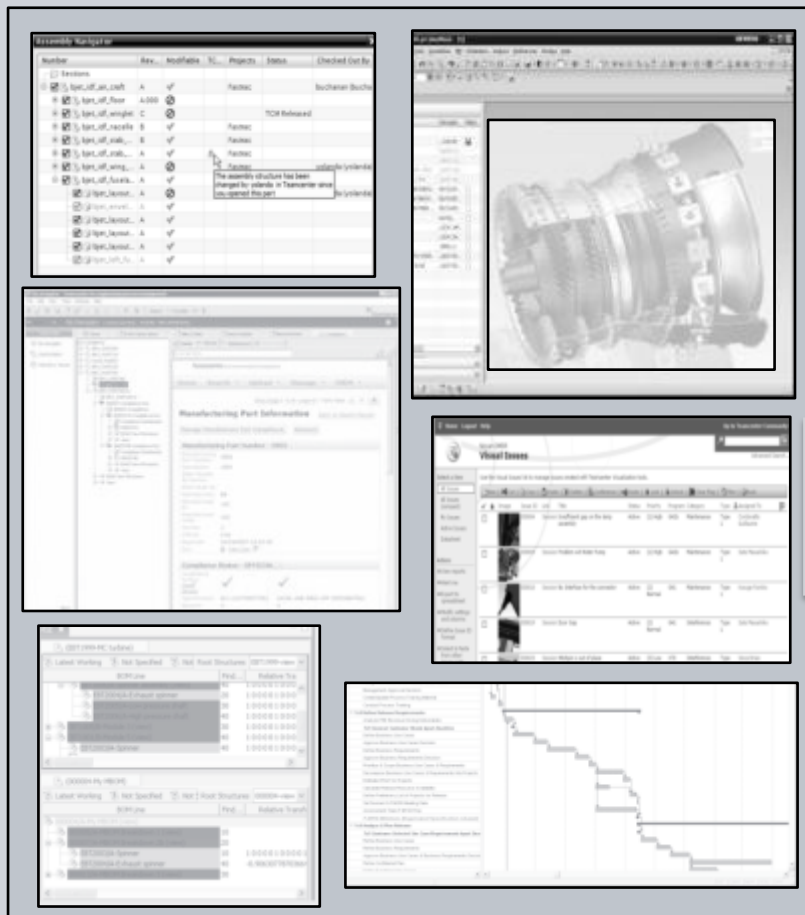
- ProSTEP iViP driving ISO project
- ISO New Work Item - JT as IS 14306

HD-PLM



Continuing support for JT in Siemens PLM products

JT in HD3D - Visual analytics from multiple disjoint data sources in the context of 3D designs in a single interactive environment.



JT - Visualizing the Future

JT as Geometry Master

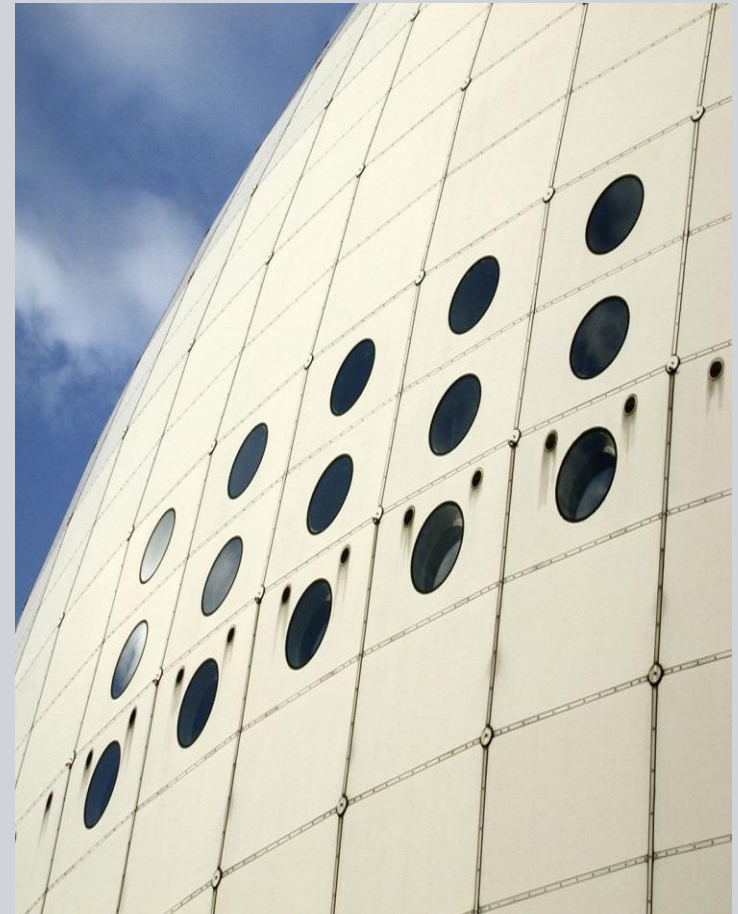
- PMI, Kinematics, CAE, Materials, Documentation

JT for Mobile Access

Social Communication

Fully Implemented International Standard

Expanded adoption in multiple industries



JT OPEN

Visualizing the JT Future

Chuck Grindstaff, EVP Products and CTO

SIEMENS

Siemens PLM Software

SEPTEMBER 12 -14

2010 International Conference

VISUALIZING THE FUTURE

Hosted by

SIEMENS