

Teamcenter Express Version 5.3

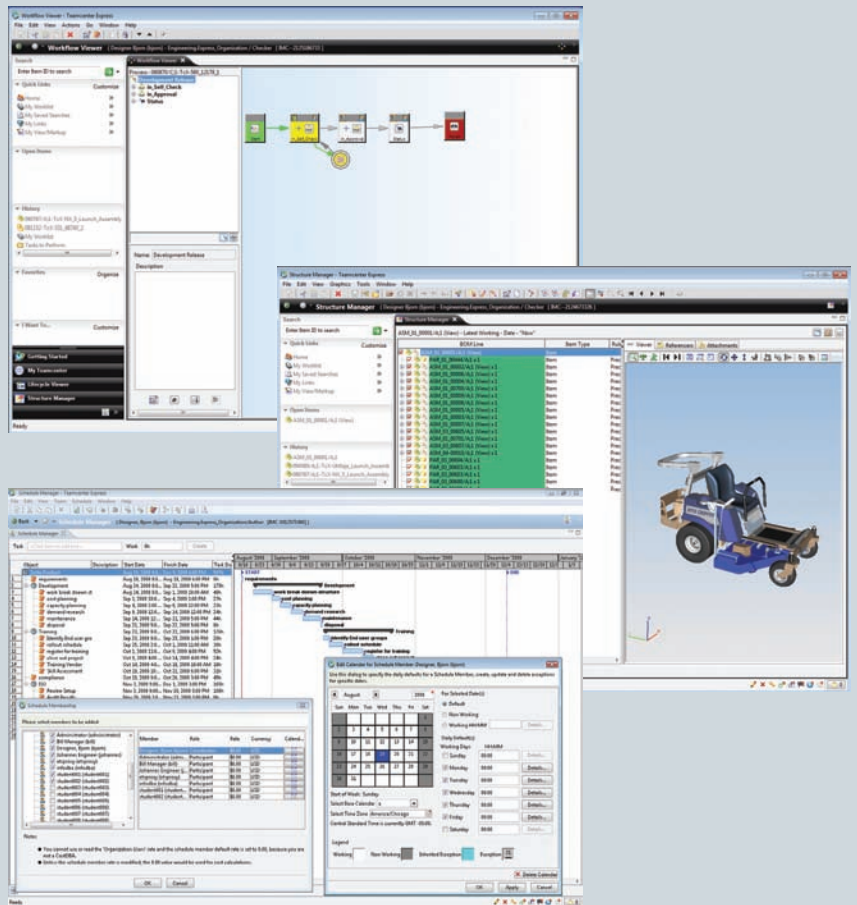
Preconfigured cPDM solution delivers faster implementation and improved productivity

Benefits

- Updated user interface for a faster learning curve and improved efficiency for completing everyday tasks and processes
- Wider access to a single source of product data that improves efficiency and reduces error and rework
- Easier access to project plans and expanded project planning capabilities for more accurate project management
- Latest Microsoft platform support for improved performance and low total cost of ownership

Summary

Teamcenter® Express version 5.3 software builds on its proven delivery of a preconfigured cPDM environment by providing an updated user interface, enhanced integration with desktop applications and expanded project scheduling capabilities. These new capabilities result in a faster learning curve and wider access to a single source of product data for manufacturing organizations, increasing their ability to complete their projects on-time and on-budget while minimizing errors in manufacturing.



TEAMCENTER EXPRESS

www.siemens.com/plm/teamcenterexpress

SIEMENS

Teamcenter Express Version 5.3

Features

- Built on Teamcenter 8.3 to deliver best-in-class scalability and take advantage of the latest developments in the industry's leading PLM platform
- Updated user interface with enhanced summary tab and easier searching on Explorer panel
- Enhanced integration with Microsoft Office and Adobe Acrobat enables more users to contribute to and access a single source of product data
- Improved BOM capabilities for more comprehensive and efficient management of product structures
- New web client support for project management that facilitates wider access for reviewing project schedules

Teamcenter Express Version 5.3 takes advantage of the latest developments in Teamcenter, the industry's most widely implemented PLM solution, to further establish Teamcenter Express as the leader in providing a preconfigured cPDM environment that is easy-to-implement while providing fast return on investment.

Updated user interface for faster learning curve

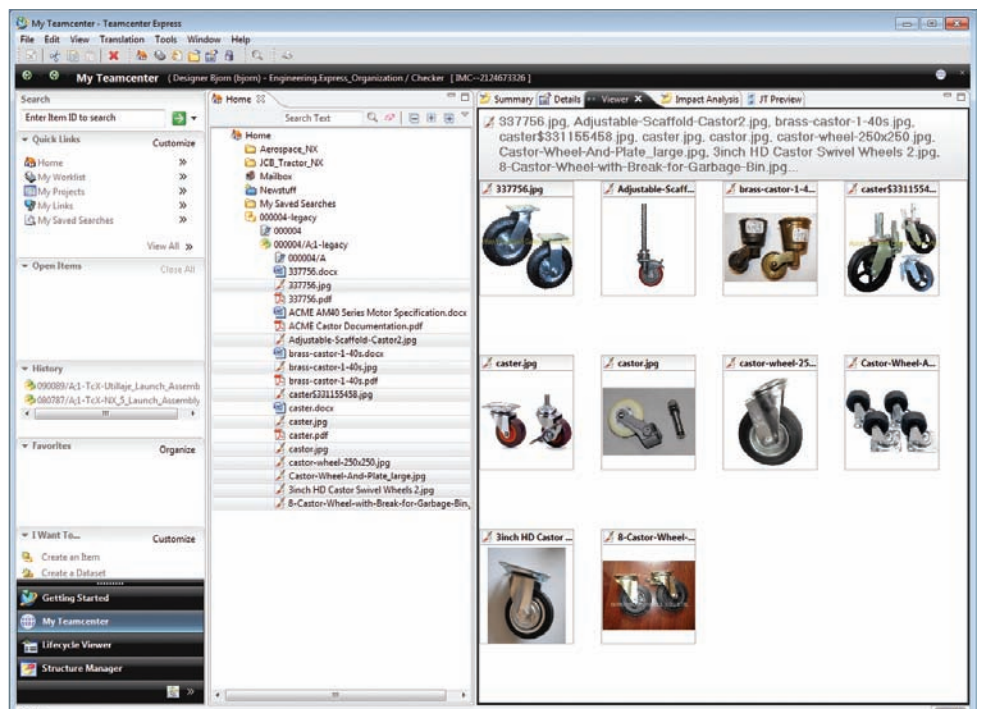
Users benefit from extensive updates to the Teamcenter Express user interface that speed their learning curve, and ensure that everyday tasks are completed efficiently and consistently. For example:

- Enhanced Summary Tab gives direct access to key item data (such as associated datasets and item revisions) and easier access to common tasks
- Direct searching in the Explorer Panel with wildcard capability for fast identification of needed data. Search results can be displayed using thumbnail graphics
- Ability to initiate a new subprocess from a workflow that is currently active is now available

Wider access to a single source of product data

Enhanced integrations with Microsoft Office and Adobe Acrobat and a new utility to load multiple files enable more users to contribute to and access the single source of product data.

- For engineers and other users who create and consume technical data using Microsoft Office applications such as Outlook, Word, Excel and PowerPoint, Teamcenter Express Version 5.3 delivers an updated integration with Microsoft Office 2010
- New capability loads markups from Microsoft Word, and then manages and reference these markups in Teamcenter Express
- Expanded support for working with Adobe pdf documents includes the ability to run Adobe Acrobat in the embedded viewer and manage markup information
- New capability to load multiple files from Windows folders creates the appropriate datasets in Teamcenter Express



Enhanced BOM capabilities

The following new capabilities in the integrated Structure Editor module enable more comprehensive and efficient management of product structures.

- Ability to create a BOM from an Excel spreadsheet, including creation of new items
- Improved reference designator support
- Extended BOM markup capabilities including the ability to selectively apply/reject proposed changes

Expanded project scheduling capabilities

The following additional capabilities in the optional project scheduling module provide easier access for reviewing project status and enhanced project planning and cost analysis capabilities.

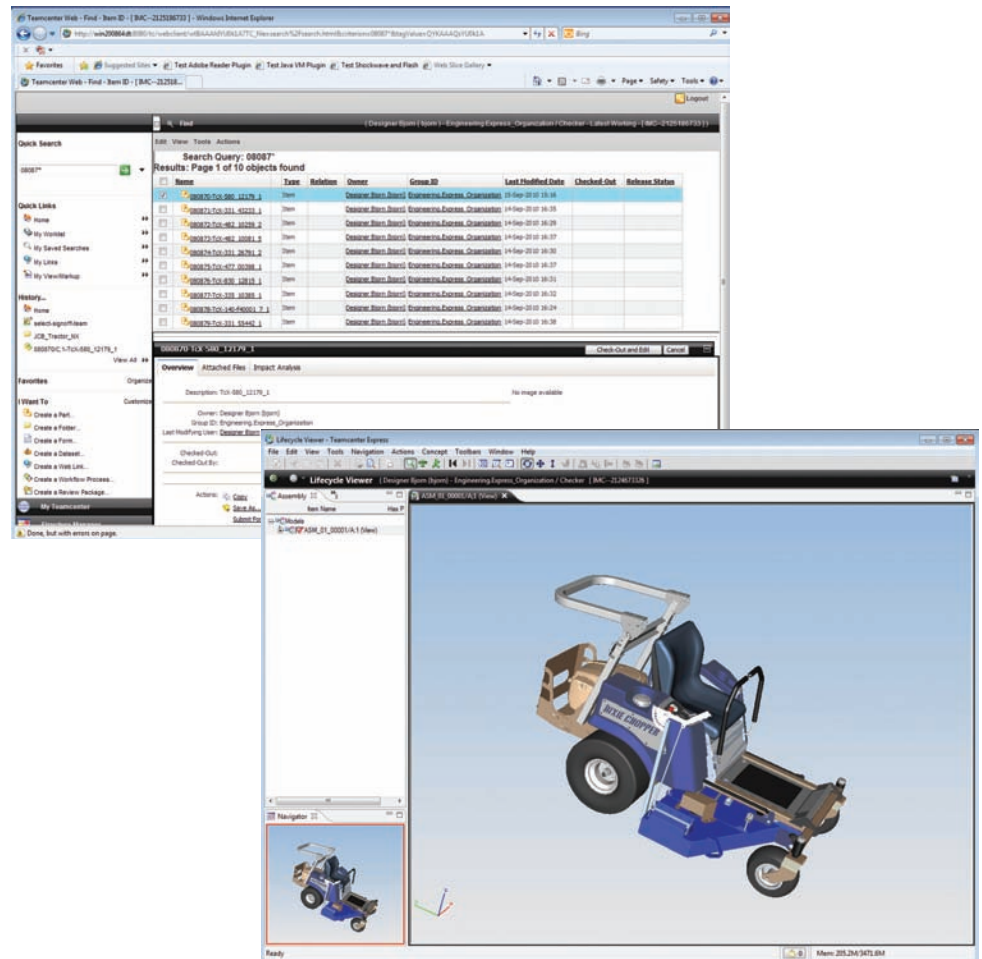
- New web client access for easy review of project schedules
- Improved project planning with work breakdown structures and critical path analysis
- Enhanced costing capability with timesheets and earned value calculation

Best-in-class scalability

Teamcenter Express Version 5.3 is a configuration of, and delivers complete scalability to, Teamcenter 8.3. Teamcenter is the proven global leader in PLM with over 5 million users. Teamcenter Express users benefit from proven scalability in terms of data complexity and the scope of the processes that can be managed, as well as the number of users that can

access the system's database. Teamcenter Express users can easily upgrade to Teamcenter to meet extended requirements by simply replacing Teamcenter Express software with Teamcenter software while retaining the underlying database and file vaults.

Support for latest Microsoft standards
Teamcenter Express Version 5.3 adds certification for Microsoft Windows Server 2008, Windows 7 clients and Microsoft Office 2010 for excellent performance, reliability, scalability and low total cost of ownership.



Contact
Siemens Industry Software
Americas 1 800 807 2200
Europe +44 (0) 1202 243455
Asia-Pacific 852 2230 3308

www.siemens.com/plm/teamcenterexpress

© 2011 Siemens Product Lifecycle Management Software Inc. All rights reserved. Siemens and the Siemens logo are registered trademarks of Siemens AG. D-Cubed, Femap, Geolus, GO PLM, I-deas, Insight, JT, NX, Parasolid, Solid Edge, Teamcenter, Tecnomatix and Velocity Series are trademarks or registered trademarks of Siemens Product Lifecycle Management Software Inc. or its subsidiaries in the United States and in other countries. All other logos, trademarks, registered trademarks or service marks used herein are the property of their respective holders.
X9 22595 6/11 C