

# JT OPEN

## JT Validation

Panel Discussion



Jeffrey A. Stevens (General Motors)

SEPTEMBER 12 -14

2010 International Conference

VISUALIZING THE FUTURE

Hosted by

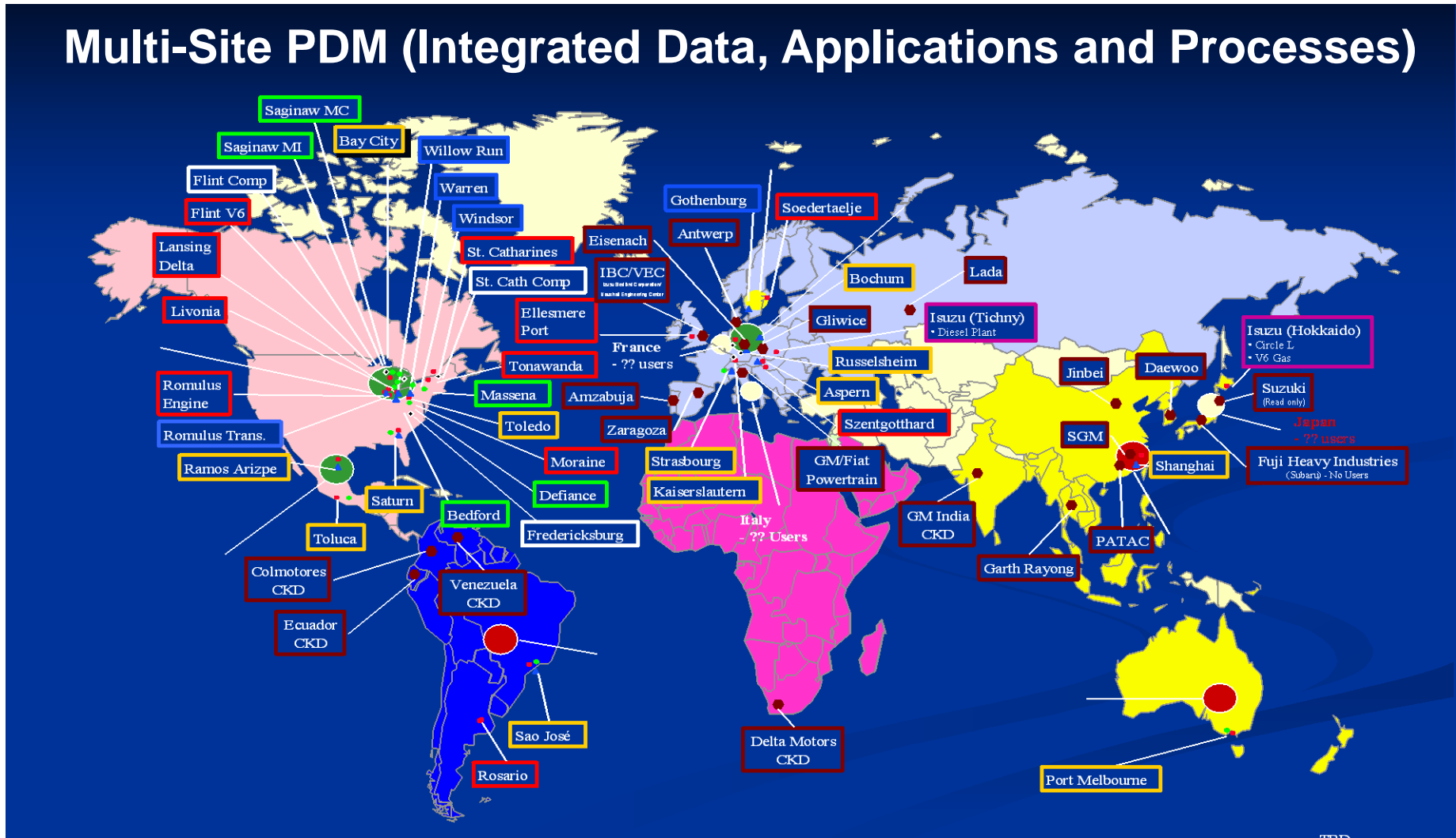
SIEMENS

# GM Global Design & Engineering Centers

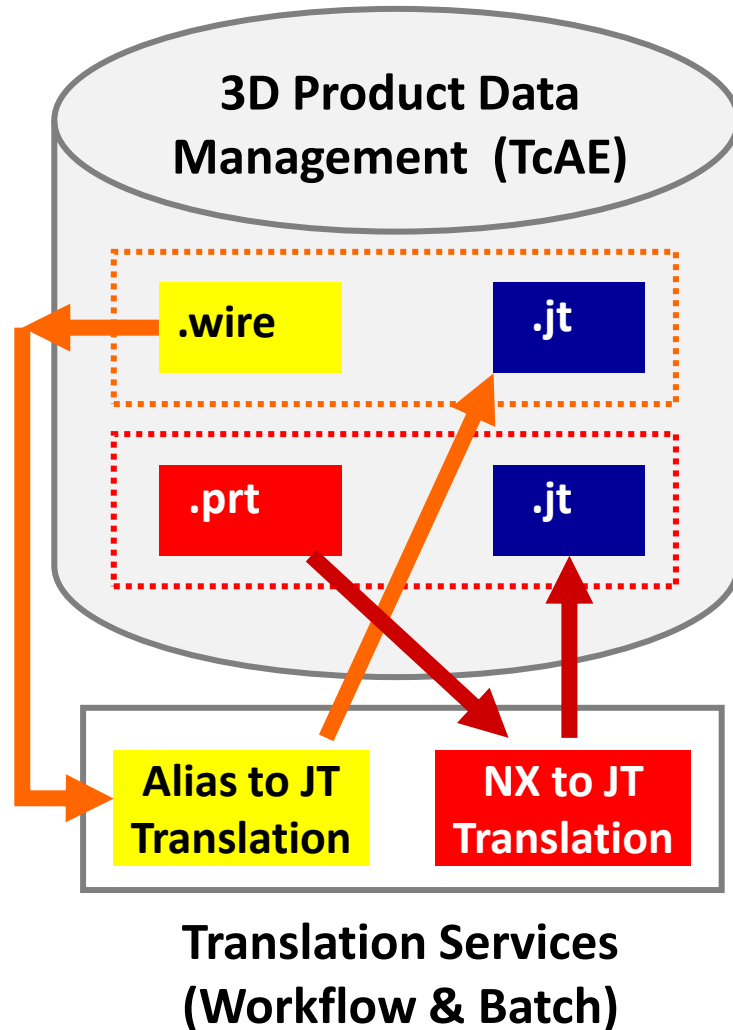


# Global Product Data Management

## Multi-Site PDM (Integrated Data, Applications and Processes)



# Product Data Management and JT



## JT File

### Attributes:

### Levels of Detail:

3 or 4 Named LODs  
(Dependent on Workflow)

### Boundary Rep:

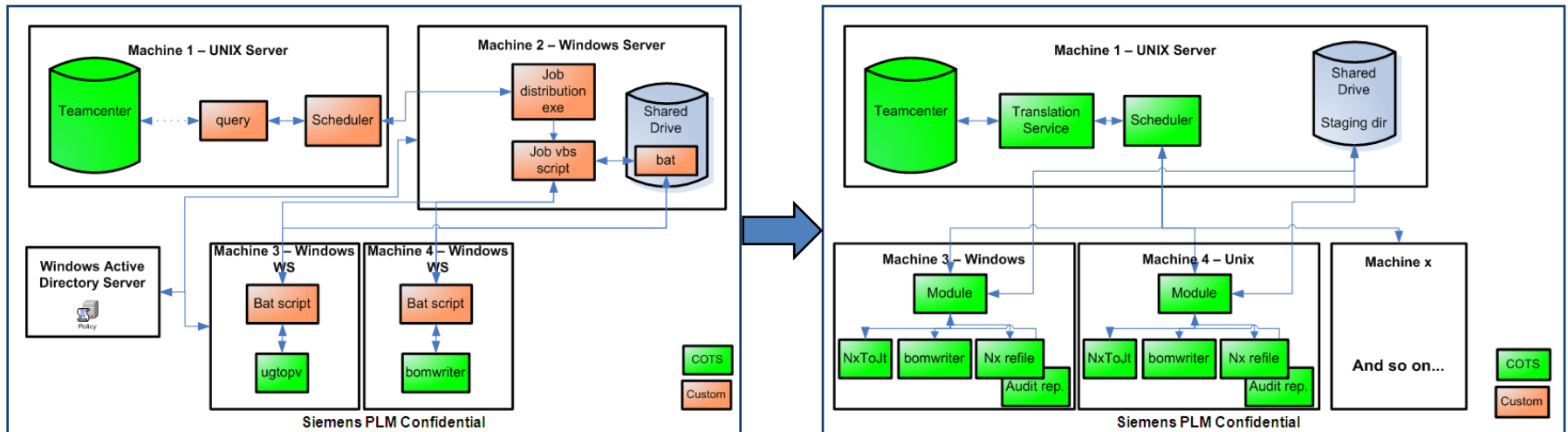
XT Brep – GM Standard  
JT Brep - No longer used  
ULP – Not yet utilized

### PMI:

GD&T - Beginning to use

# Standardized Creation of JT Files (PDM based)

## GM Custom Auto-Tessellator Siemens Translation Services



General Motors has shifted most of our translation for JT from a custom internal auto-tessellator to the COTS Siemens Translation Services. Expected to complete all key processes in 2010.



# Validation of JT Files

## Validation Checks

**Completeness:** JT contains all required/expected content

**Correctness:** JT file is semantically correct (“well formed”)

**Fidelity:** JT file is accurate to the CAD Model (geometry, etc.)

**Usability:** JT file can be utilized by consuming application

**Conformance:** JT file contains the “right content” for the usage (purpose)

# Validation of JT Files (JT Partitions)

## Enterprise JT Partitions (Approved JT)

**Attributes: Based on Configuration File (Conformance)**

**Levels of Detail: (3 or 4 Named LODs) - Visual (Usability)**

- **Styling (Highest LOD – Most Polygons) – No gaps or sparkles**
- **DMU Fine**
- **DMU**
- **Factory (Lowest LOD – Fewest Polygons)**

**XT Brep: Consistency between JT and NX .prt files (Fidelity)**

**PMI: NX & TcVis compatibility for GD&T (Fidelity & Correctness)**

**ULP: Not yet tested (Usability)**

**CAD file (NX or Alias) is validated prior to JT Translation**

# Validation of JT Files (Fit for Purpose)

## Examples: (Current Workflows & Processes)

- **Design Reviews: Work-in-Process JT**
- **Virtual Builds & Audits: Enterprise JT - Released or Baselined (Status)**
- **Reference Data for CAD (NX or Alias): Enterprise JT (Re-Use)**
- **High End Visualization & Virtual Reality: WIP JT & Enterprise JT**
- **Purchasing (Sourcing): Enterprise JT (Re-Purposed)**
- **Marketing Virtual Garage: Enterprise JT (Re-Purposed)**
- **Legal (eDiscovery): Enterprise JT (Re-Purposed)**

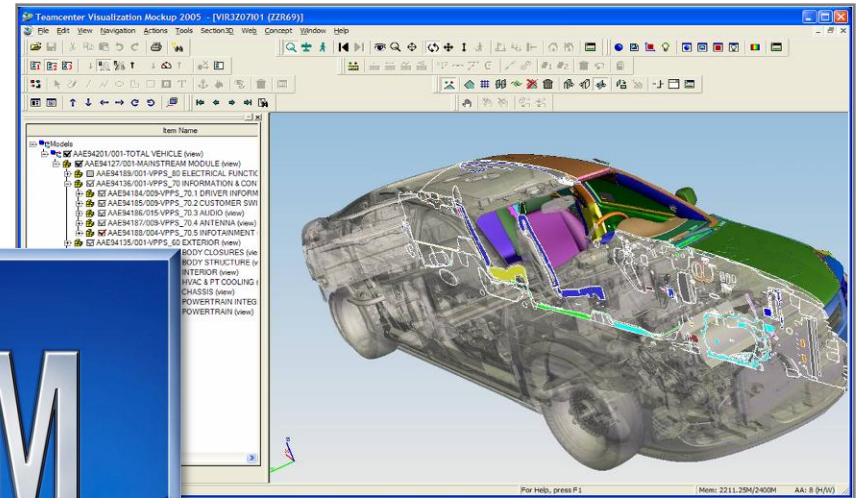
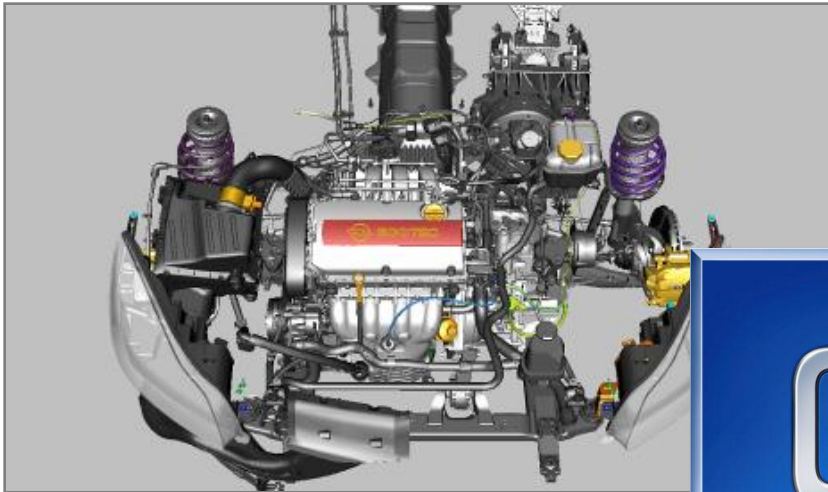


# Validation of JT Files (Future Requirements???)

## Examples: (Future Workflows & Processes???)

- **Part Finding & Shape Search: Validate Search from JT Attributes & Indexing (Usability)**
- **Purchasing (Sourcing): Validate ULP & JT2GO (Fidelity)**
- **Marketing Virtual Garage: JT for VVP (Usability - DCC Application support of JT)**
- **Aesthetic Validation: TBD (Fidelity – Adv. Material support in JT)**
- **In-Line Process/Workflow Validation: TBD**
- **Supplier Data Exchange: TBD (Fidelity & Conformance - May require custom workflows with NX and Checkmate)**
- **Long Term Data Archival: TBD (Fidelity & Conformance)**

# JT Validation



1. Global Plan   2. Global DRE   3. Global Parts   4. Global CI

