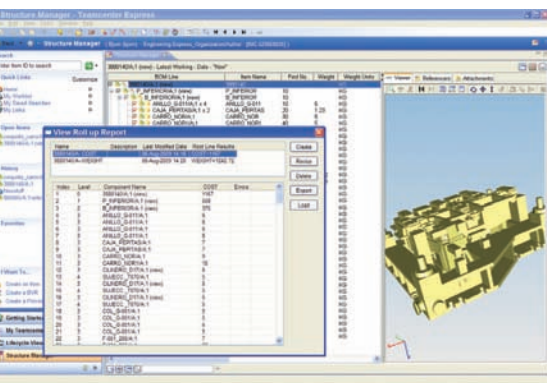


Teamcenter Express Version 5

Features *continued*

- Expanded reporting capabilities, including cost and weight analysis
- Enhanced integration with Microsoft Word, Excel, PowerPoint and Outlook to provide Office users with easy access to Teamcenter single source of product data and workflow tasks
- Expanded project scheduling capabilities including viewing of multiple project schedules and project cost rollups



Updated user interface

Users benefit from extensive updates to the Teamcenter Express user interface that speed their learning curve, improve productivity and facilitate consistency across everyday user tasks. These improvements include:

- Enhanced Lifecycle Viewer application, which consolidates visualization and markup capabilities in an easy-to-use interface
- Enhanced Structure Manager application, which enables users to visualize and manage product, document and project structures
- Increased use of color in workflow diagrams, which enables users to more easily and rapidly communicate workflow status

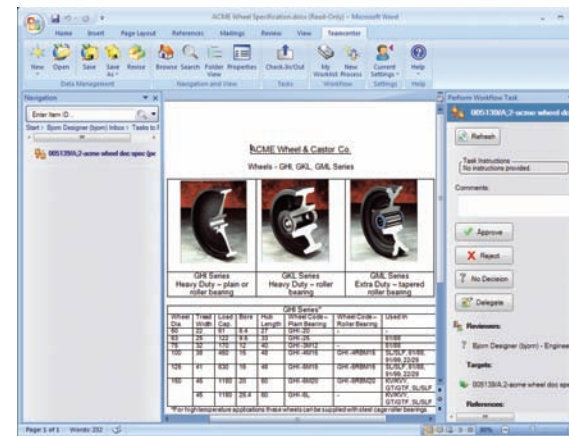
Expanded reporting including cost and weight analysis

An enhanced reporting tool integrated into the Structure Manager enables product costs to be calculated, stored and analyzed throughout the product lifecycle. This enables users to better control costs from initial concept through detailed design to product release and ongoing maintenance. In turn, this leads to better overall cost control and increased profitability. In addition to facilitating cost analysis, reports can be used to analyze weight and other user-defined attributes.

Enhanced integration with Microsoft Office

Version 5 adds an improved user interface and expanded capabilities for integration with Microsoft Office. Users of Microsoft Office 2007's Word, Excel and PowerPoint systems can easily browse and search the Teamcenter Express database while

working in these applications. In addition, they can add new documents to Teamcenter single source of data and open their inbox to review and approve PDM workflow tasks that have been assigned to them. Microsoft Outlook users can also see all of their assigned PDM workflow tasks and review and sign off on these tasks and the associated documents.

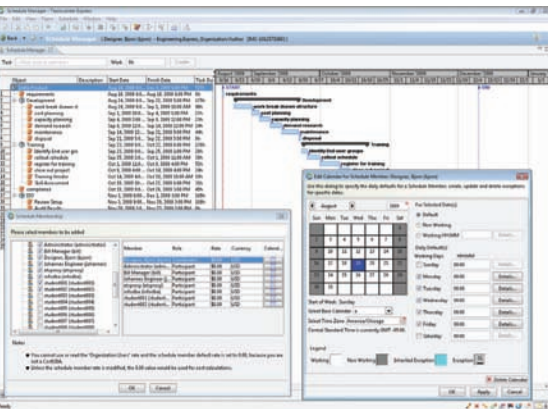


Expanded project scheduling and project cost analysis

Version 5 includes several enhancements in Teamcenter Express' optional project management module. These improvements include the ability to create links between projects so that you can create a master project with subprojects. Users can also view multiple project schedules in a single window, enabling improved resource allocation and early identification and resolution of potential bottlenecks. Project cost rollups are now available, enabling you to calculate and analyze project costs throughout the project lifecycle.

Best-in-class scalability

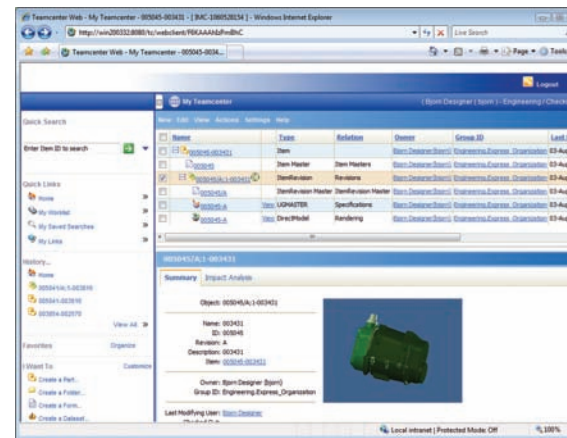
Teamcenter Express Version 5 is built on Teamcenter 8 and delivers complete scalability to the unified architecture of Teamcenter 8. Teamcenter is the proven global leader in PLM with over 5 million licenses; it delivers proven scalability to



Teamcenter Express users with respect to the complexity of data and the scope of processes it can manage, as well as the Teamcenter Express users with respect to database. Teamcenter Express users can easily upgrade to Teamcenter to meet the complexity of data and the scope of number of users that can access the extended requirements by simply replacing Teamcenter Express software with Teamcenter software and retaining the underlying database and file vaults.

Support for Microsoft SQL Server

Teamcenter Express Version 5 adds support for Microsoft SQL Server 2008 so users can take advantage of the improved performance, scalability and security in this latest release. Existing Teamcenter Express customers can upgrade to Version 5 using the standard upgrade utility provided by Teamcenter Express with no loss of data and no required data conversion.



Contact
Siemens Industry Software
Americas 1 800 807 2200
Europe +44 (0) 1202 243455
Asia-Pacific 852 2230 3308

www.siemens.com/plm/teamcenterexpress

© 2011 Siemens Product Lifecycle Management Software Inc. All rights reserved. Siemens and the Siemens logo are registered trademarks of Siemens AG. D-Cubed, Femap, Geolus, GO PLM, I-deas, Insight, JT, NX, Parasolid, Solid Edge, Teamcenter, Tecnomatix and Velocity Series are trademarks or registered trademarks of Siemens Product Lifecycle Management Software Inc. or its subsidiaries in the United States and in other countries. All other logos, trademarks, registered trademarks or service marks used herein are the property of their respective holders.
X5 18658 6/11 B