

Teamcenter Integration for Inventor

Capture, manage and share Inventor data using Teamcenter, the de facto standard for PLM deployments

fact sheet

Siemens PLM Software

www.siemens.com/plm

► Summary

Teamcenter® Integration for Inventor software enables you to reduce your product development cycle times and costs by enhancing your Inventor environment through integration with Teamcenter, the industry-leading collaborative product data management (cPDM) solution.

Benefits

Integrate your Inventor files with all of your technical data to provide a single source of product information that supports your complete design-through-manufacturing process

Less time spent finding the correct revisions of Inventor data

Faster product change and approval processes resulting in decreased time-to-market

Enables consistent work processes to be followed across all data formats resulting in less errors and rework

Improved collaboration within your organization and with customers and suppliers

Features

Access Teamcenter cPDM capabilities directly from within Inventor

Create and edit Inventor parts, drawings and assemblies under the control of Teamcenter

Create and manage new product revisions and versions

Automatic generation of lightweight visualization (JT) files for Inventor parts

Save Inventor Part models to the industry-standard JT lightweight representation

Bi-directional transfer of Inventor document properties to/from Teamcenter

Teamcenter Integration for Inventor enables design information created in Inventor to be captured, controlled and shared by your organization in a single, highly secure cPDM environment, while version management and access control ensure that the right people get the right information at the right time.

Using the Integration for Inventor, design teams can quickly search and access Inventor parts, assemblies and drawings to eliminate time wasted trying to find and share design information, while reducing change orders by ensuring that everyone is working from the latest design information.

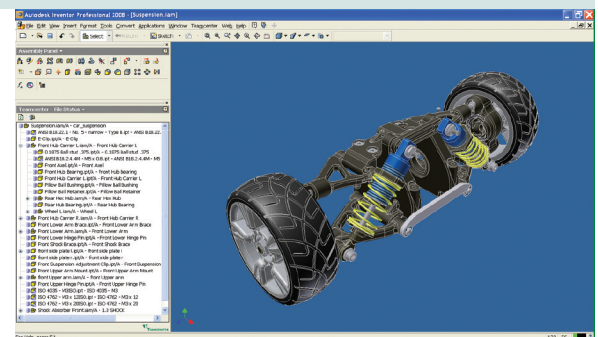
The capabilities go beyond workgroup CAD data management, enabling design teams at different locations and through your supply chain to work closely together to streamline the product development process through multi-site collaboration.

The Integration for Inventor is a designer centric solution that leverages existing Teamcenter rules and enables Inventor data to be incorporated into a multi-CAD environment. The user interface is embedded in Inventor and includes:

- A pull-down menu for connecting to Teamcenter, searching the Teamcenter database and accessing online help
- The Teamcenter home browser panel for selecting documents and adding them to the current Inventor session
- The Teamcenter file status browser panel for reviewing PDM information and performing PDM operations on the documents in the current Inventor session

Supported Inventor documents

- Assemblies (.iam)
- Parts (.ipt)
- Drawings (.idw)
- Presentations (.ipn)

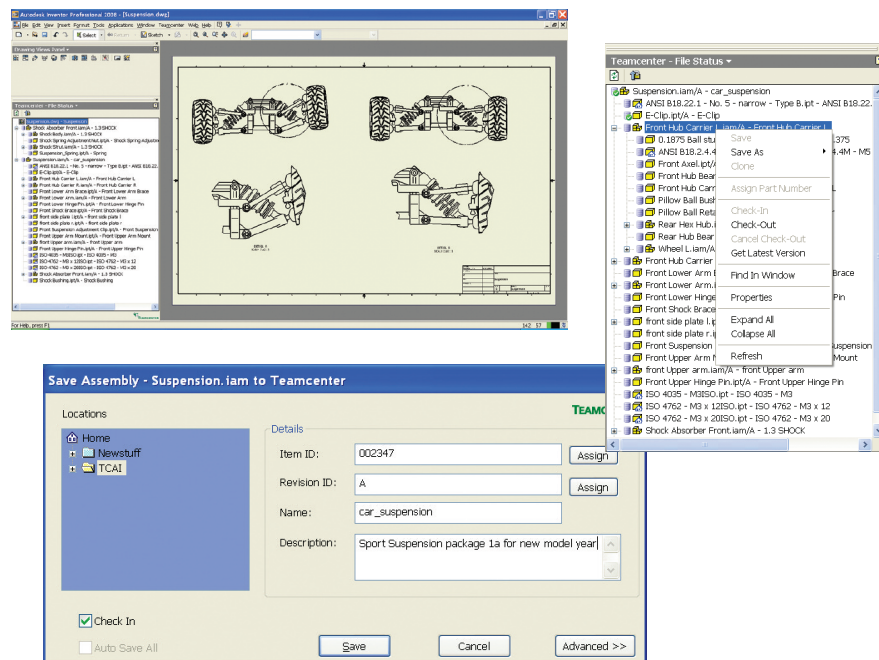


Integration for Inventor – supported functions

- Version and revision control of Inventor assemblies, parts, drawings and presentation files
- Integrated Teamcenter access from within Inventor. Access the Teamcenter workspace and Teamcenter functions such as search and retrieve, thumbnail viewing, where used, and check-in/check-out
- Save new documents to Teamcenter using Teamcenter business object rules for ID, name and revision
- Open Inventor assemblies using “level of detail” rules
- Determine checked in/checked out status and ownership of parts in an Inventor assembly
- Place and rename components in an Inventor assembly
- Inventor libraries and iPart support
- Automated product structure and part-drawing links transfer to Teamcenter
- Create, configure and edit assemblies using your familiar Inventor environment
- Bi-directional Inventor document properties transfer to/from Teamcenter attributes
- Automatically generate and manage lightweight visualization (JT) files for Inventor parts

The Teamcenter Integration for Inventor is supported by both Teamcenter and Teamcenter Express:

- *Teamcenter* powers innovation and productivity by connecting people and processes with knowledge. Teamcenter is the de facto standard for PLM deployments, and is backed by UGS' leadership in delivery.
- *Teamcenter Express* is a configuration of Teamcenter targeted at SMBs and is an entry point into the Teamcenter product line. Users of Teamcenter Express can easily expand the scope of their cPDM implementation by taking advantage of Teamcenter's comprehensive portfolio of applications and its proven scalability in terms of performance and global implementation.



► Contact

Siemens PLM Software

Americas 800 498 5351
 Europe +44 (0) 1276 702000
 Asia-Pacific 852 2230 3333

www.siemens.com/plm

SIEMENS