

JT Open

Benefits

- Access to official JT Open Toolkit
- Strong and direct voice in JT's future
- Access to JT user community
- Ability to leverage JT-enabled best practices

Summary

JT Open is a unique community of software users, independent software vendors and like-minded individuals who are committed to the adoption of the JT™ format as the preferred technology for 3D visualization, collaboration and data sharing in today's product lifecycle management (PLM) environments. The JT Open Program provides participating members with level playing field access to JT technology while promoting the development of best-in-class applications offered by the program's vendor members.

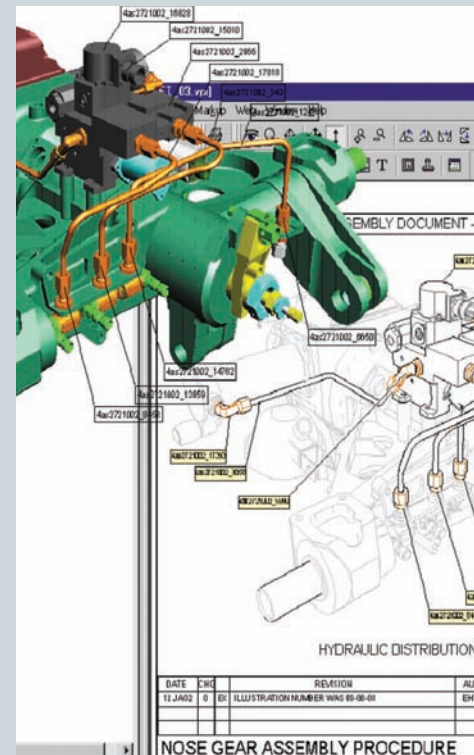
The role of JT technology

JT provides the common 3D language for facilitating collaboration, visualization and interoperability between PLM software applications. JT serves as a unifying technology for:

- Traditional product design
- Manufacturing
- Supplier collaboration
- Documentation
- Data archiving

JT is especially adept at enabling a broad range of users to access and work with intuitively understandable visualization data (even if they possess minimal engineering knowledge).

JT technology is supported through an industry initiative known as the JT Open Program, which is an organized community driven by global leaders in the PLM industry. JT and the published JT File Format Reference are supported by global organizations such as the ISO. The JT File Format Reference has been accepted by the ISO as PAS 14306. Work continues to complete acceptance of JT as an international standard.



PLM COMPONENTS

JT Open

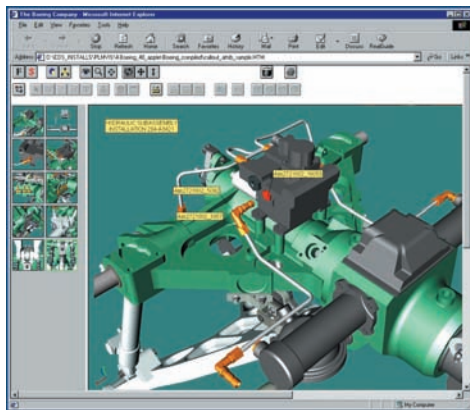
The value of the JT Open Program

The JT Open Program is open to commercial manufacturers, software vendors, academic institutions and PLM providers who endeavor to champion JT technology, proliferate its usage and sustain its position as the industry standard for visualization, collaboration and data exchange.

Specifically, the JT Open Program is chartered with:

- Promoting the widespread adoption of JT technology across the PLM value chain
- Enabling users, suppliers and customers to share lightweight 3D data by leveraging standard JT technology
- Delivering a strong, direct voice in determining the future of JT technology

All JT Open members have the opportunity to participate in open forums where members share knowledge on visualization, collaboration and data sharing across today's most popular PLM solutions.



Membership

Prospective members join JT Open in one of the following membership categories:

- *Corporate* members include companies that use JT as the platform-of-choice for visualization and data sharing in their business processes.
- *Vendor* members include software vendors that provide JT-enabled applications to JT Open corporate members and the global community of JT adopters.
- *Academic* members include educational institutions that use the JT Open Toolkit for research and teaching.
- *Advocates* typically include hardware, software and service suppliers that want to actively support the goals of the JT Open community without directly making use of JT technology.

JT Open *vendor* member pricing is optimized to provide an economical path for software vendors that want to enter the JT market and create innovative JT-enabled applications. In addition, corporate members also have the option to make use of the supplied technology for development of in-house JT-enabled applications.

Governance and structure of the JT Open Program

Two governing boards are responsible for coordinating the activities of the JT Open Program.

- The Management Review Board represents the business and management interests of the JT Open member community.
- The Technical Review Board represents the JT community's technical interests.

All JT Open Program members have the option of participating in the Technical Review Board. The Management Review Board is made up of delegates from

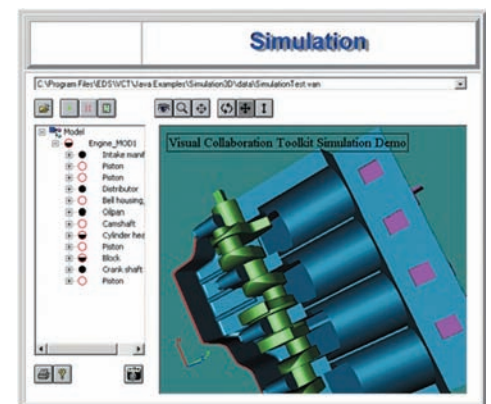
corporate and software vendor members; board members nominate and vote on board participants.

Program members meet for coordinated sessions to discuss JT deployment strategies and the best use of JT technology. The Technical Review Board manages work teams focused on issues such as deployment strategies and standard process definition.

Your next step

To learn more about the workings of the JT Open Program and the use of JT technology, visit www.jtopen.com.

Don't miss this opportunity to join JT Open – a community of users, vendors, and other interested parties committed to enhancing JT technology, promoting its use, and sharing its benefits. Contact your local Siemens PLM Software sales representative to learn more about JT Open and how you can become a member of one of the world's most exciting forums for improving today's product lifecycle.



Contact
Siemens PLM Software
Americas 800 498 5351
Europe 44 (0) 1276 702000
Asia-Pacific 852 2230 3333

www.siemens.com/plmcomponents

© 2011 Siemens Product Lifecycle Management Software Inc. All rights reserved. Siemens and the Siemens logo are registered trademarks of Siemens AG. D-Cubed, Femap, Geolus, GO PLM, I-deas, Insight, JT, NX, Parasolid, Solid Edge, Teamcenter, Tecnomatix and Velocity Series are trademarks or registered trademarks of Siemens Product Lifecycle Management Software Inc. or its subsidiaries in the United States and in other countries. All other logos, trademarks, registered trademarks or service marks used herein are the property of their respective holders.
X16 2949 2/11 B