

Teamcenter Express Version 5

Increasing productivity while facilitating on-time, on-budget completion of design-through-manufacturing projects

fact sheet

Siemens PLM Software

www.siemens.com/plm/teamcenterexpress

► Summary

Teamcenter® Express version 5 software builds on the proven delivery of a preconfigured cPDM environment by providing an updated user interface, new product and project cost analysis tools, enhanced Microsoft Office integration and expanded project scheduling capabilities. These new capabilities improve productivity for small and mid-size manufacturing companies while increasing your ability to complete design-through-manufacturing projects on time and on budget.

Benefits

Updated user interface enables a faster learning curve and improved efficiency for completing everyday tasks and processes

Easier calculation and tracking of product and project costs provides managers with the information they need to improve profitability

Broader access to a single source of product data improves efficiency and reduces error and rework

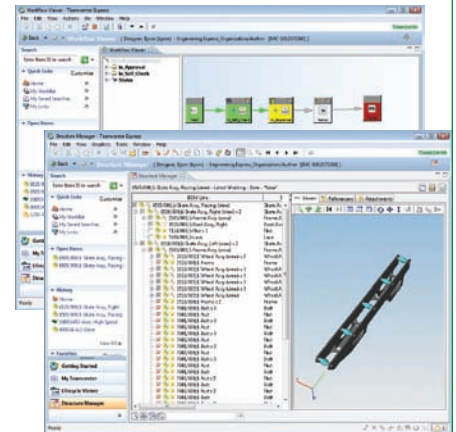
Visibility of multiple projects, and connecting PDM data and process to project schedules enables more efficient utilization of scarce resources

Teamcenter Express Version 5 takes advantage of the latest developments in Teamcenter 8, the industry's most widely implemented PLM solution, to further establish Teamcenter Express as the leader in providing a preconfigured cPDM environment that focuses on managing everyday tasks and processes for small and mid-sized manufacturing companies that implement design-through-manufacturing initiatives.

Updated user interface

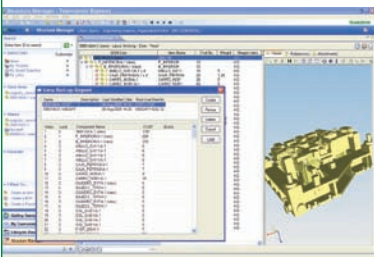
Users benefit from extensive updates to the Teamcenter Express user interface that speed their learning curve, improve productivity and facilitate consistency across everyday user tasks. These improvements include:

- Enhanced Lifecycle Viewer application, which consolidates visualization and markup capabilities in an easy-to-use interface
- Enhanced Structure Manager application, which enables users to visualize and manage product, document and project structures
- Increased use of color in workflow diagrams, which enables users to more easily and rapidly communicate workflow status



Expanded reporting including cost and weight analysis

An enhanced reporting tool integrated into the Structure Manager enables product costs to be calculated, stored and analyzed throughout the product lifecycle. This enables users to better control costs from initial concept through detailed design to product release and ongoing maintenance. In turn, this leads to better overall cost control and increased profitability. In addition to facilitating cost analysis, reports can be used to analyze weight and other user-defined attributes.



Features

Built on the unified architecture of Teamcenter 8 to deliver best-in-class scalability and take advantage of the latest developments in this industry-leading PLM platform

Updated user interface with enhanced Lifecycle Viewer and Structure Manager applications

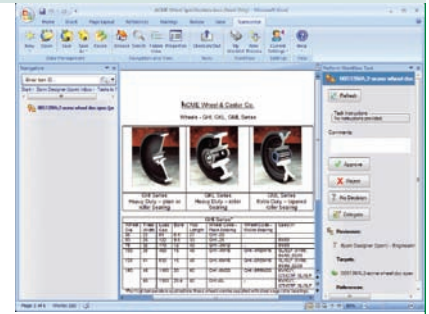
Expanded reporting capabilities, including cost and weight analysis

Enhanced integration with Microsoft Word, Excel, PowerPoint and Outlook to provide Office users with easy access to Teamcenter's single source of product data and workflow tasks

Expanded project scheduling capabilities including viewing of multiple project schedules and project cost rollups

Enhanced integration with Microsoft Office

Version 5 adds an improved user interface and expanded capabilities for integration with Microsoft Office. Users of Microsoft Office 2007's Word, Excel and PowerPoint systems can easily browse and search the Teamcenter Express database while working in these applications. In addition, they can add new documents to Teamcenter's single source of data and open their inbox to review and approve PDM workflow tasks that have been assigned to them. Microsoft Outlook users can also see all of their assigned PDM workflow tasks and review and sign off on these tasks and the associated documents.

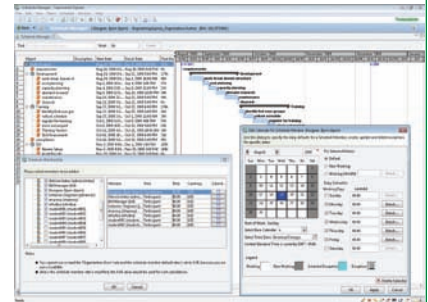


Expanded project scheduling and project cost analysis

Version 5 includes several enhancements in Teamcenter Express' optional project management module. These improvements include the ability to create links between projects so that you can create a master project with sub-projects. Users can also view multiple project schedules in a single window, enabling improved resource allocation and early identification and resolution of potential bottlenecks. Project cost rollups are now available, enabling you to calculate and analyze project costs throughout the project lifecycle.

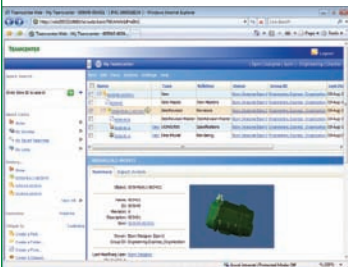
Best-in-class scalability

Teamcenter Express Version 5 is built on Teamcenter 8 and delivers complete scalability to the unified architecture of Teamcenter 8. Teamcenter is the proven global leader in PLM with over 5 million licenses; it delivers proven scalability to Teamcenter Express users with respect to the complexity of data and the scope of processes it can manage, as well as the number of users that can access the database. Teamcenter Express users can easily upgrade to Teamcenter to meet extended requirements by simply replacing Teamcenter Express software with Teamcenter software and retaining the underlying database and file vaults.



Support for Microsoft SQL Server

Teamcenter Express Version 5 adds support for Microsoft SQL Server 2008 so users can take advantage of the improved performance, scalability and security in this latest release. Existing Teamcenter Express customers can upgrade to Version 5 using the standard upgrade utility provided by Teamcenter Express with no loss of data and no required data conversion.



► For more information, contact your local Velocity Series™ portfolio representative:

► **Contact**
 Siemens PLM Software – www.siemens.com/plm/teamcenterexpress
 Americas 800 807 2200
 Europe 44 (0) 1202 243455
 Asia-Pacific 852 2230 3308

SIEMENS